

Nur für Forschungszwecke

MEF2D Polyklonaler Antikörper

Katalog-Nr.:14353-1-AP

Vorgestelltes Produkt

10 Publikationen



Allgemeine Informationen

Katalog-Nr.:
14353-1-AP

Größe:

150ul, Konzentration: 500 µg/ml von
Nanodrop und 240 µg/ml durch die
Bradford-Methode mit BSA als
Standard;

Wirt:

Kaninchen

Isotyp:

IgG

Immunogen Katalognummer:
AG5700

GenBank-Zugangsnummer:

BC040949

GeneID (NCBI):

4209

Vollständiger Name:

myocyte enhancer factor 2D

Berechnete Masse:

56 kDa

Beobachtete Masse:

55-60 kDa

Reinigungsmethode:

Antigen-Affinitätsreinigung

Empfohlene Verdünnungen:

WB 1:500-1:1000

IHC 1:200-1:800

IF 1:50-1:500

Anwendungen

Geprüfte Anwendungen:

IF, IHC, WB, ELISA

In Publikationen genannte Anwendungen:

IF, IHC, WB

Getestete Reaktivität:

Human, Maus

Zitierte Arten:

Human, Maus, Ratte

**Hinweis-IHC: Antigendemaskierung mit TE-
Puffer pH 9,0 empfohlen. (*) Wahlweise
kann die Antigendemaskierung auch mit
Citratpuffer pH 6,0 erfolgen.**

Positivkontrollen:

WB : C2C12 cell, HeLa-Zellen

IHC : Maushirngewebe,

IF : HeLa-Zellen,

Hintergrundinformationen

MEF2D, also named as Myocyte-specific enhancer factor 2D, is a 521 amino acid protein, which belongs to the MEF2 family. MEF2D is expressed in t in myotubes and also in undifferentiated myoblasts. MEF2D as a transcriptional activator which binds specifically to the MEF2 element, found in numerous muscle-specific and stress-induced genes. MEF2D mediates cellular functions not only in skeletal and cardiac muscle development, but also in neuronal differentiation and survival. The calculated molecular weight of MEF2D is 55 kDa, but Phosphorylated MEF2D is 60 kDa.

Bemerkenswerte Veröffentlichungen

Verfasser	Pubmed ID	Journal	Anwendung
Yuji Shiozaki	34517786	Autophagy	WB
Jiali Nie	30488495	J Cell Physiol	WB
Shali Yu	35305351	Ecotoxicol Environ Saf	WB

Lagerung

Lagerungsbedingungen:

Bei -20°C lagern. Nach dem Versand ein Jahr lang stabil

Lagerungspuffer:

PBS mit 0.02% Natriumazid und 50% Glycerin pH 7.3.

Aliquotieren ist nicht notwendig bei -20°C Lagerung

*** 20ul-Größen enthalten 0.1% BSA

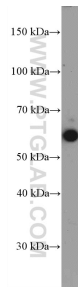
For technical support and original validation data for this product please contact:

T: 1 (888) 4PTGLAB (1-888-478-4522) (toll free
in USA), or 1(312) 455-8498 (outside USA)

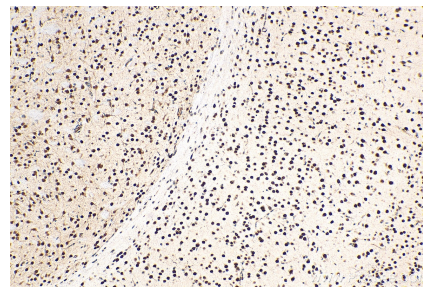
E: proteintech@ptglab.com
W: ptglab.com

This product is exclusively available under Proteintech Group brand and is not available to purchase from any other manufacturer.

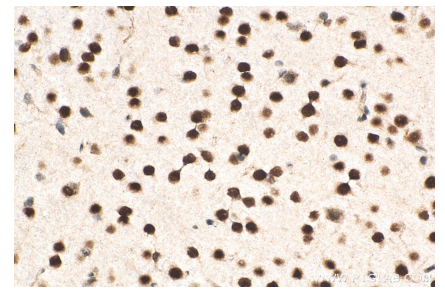
Ausgewählte Validierungsdaten



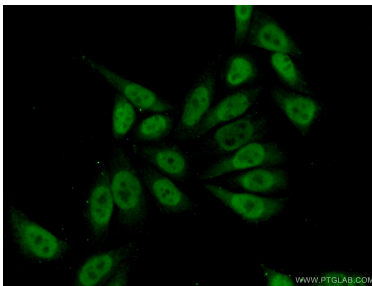
C2C12 cells were subjected to SDS PAGE followed by western blot with 14353-1-AP (MEF2D Antibody) at dilution of 1:600 incubated at room temperature for 1.5 hours.



Immunohistochemical analysis of paraffin-embedded mouse brain tissue slide using 14353-1-AP (MEF2D antibody) at dilution of 1:400 (under 10x lens). Heat mediated antigen retrieval with Tris-EDTA buffer (pH 9.0).



Immunohistochemical analysis of paraffin-embedded mouse brain tissue slide using 14353-1-AP (MEF2D antibody) at dilution of 1:400 (under 40x lens). Heat mediated antigen retrieval with Tris-EDTA buffer (pH 9.0).



Immunofluorescent analysis of (10% Formaldehyde) fixed HeLa cells using 14353-1-AP (MEF2D antibody) at dilution of 1:50 and Alexa Fluor 488-conjugated AffiniPure Goat Anti-Rabbit IgG(H+L).