

Nur für Forschungszwecke

ERG Polyklonaler Antikörper

Katalog-Nr.:14356-1-AP

Vorgestelltes Produkt

3 Publikationen



Allgemeine Informationen

Katalog-Nr.:
14356-1-AP

Größe:
150ul, Konzentration: 400 µg/ml von
Nanodrop und 267 µg/ml durch die
Bradford-Methode mit BSA als
Standard;

Wirt:
Kaninchen

Isotyp:
IgG

Immunogen Katalognummer:
AG5708

GenBank-Zugangsnummer:
BC040168

GeneID (NCBI):
2078

Vollständiger Name:
v-ets erythroblastosis virus E26
oncogene homolog (avian)

Berechnete Masse:
55 kDa

Beobachtete Masse:
55 kDa

Reinigungsmethode:
Antigen-Affinitätsreinigung

Empfohlene Verdünnungen:
WB 1:500-1:1000
IP 0.5-4.0 µg für IP und 1:500-1:1000
für WB
IHC 1:600-1:2400
IF 1:50-1:500

Anwendungen

Geprüfte Anwendungen:
FC, IF, IHC, IP, WB, ELISA

In Publikationen genannte Anwendungen:
IF, WB

Getestete Reaktivität:
Human, Maus, Ratte

Zitierte Arten:
Human, Maus

**Hinweis-IHC: Antigendemaskierung mit TE-
Puffer pH 9,0 empfohlen. (*) Wahlweise
kann die Antigendemaskierung auch mit
Citratpuffer pH 6,0 erfolgen.**

Positivkontrollen:

WB: MCF-7-Zellen, HEK-293-Zellen

IP: MCF-7-Zellen,

IHC: humanes Prostatakarzinomgewebe, humanes
Tonsillitisgewebe, Maushirngewebe

IF: MCF-7-Zellen,

Hintergrundinformationen

ERG (ETS-related gene) is a member of the ETS family of transcription factors, which are downstream effectors of mitogenic signaling transduction pathway. ERG is a key regulator of cell proliferation, differentiation, angiogenesis, inflammation, and apoptosis. ERG is involved in chromosomal translocations, resulting in different fusion gene products, such as TMPSSR2-ERG and NDRG1-ERG in prostate cancer, EWS-ERG in Ewing's sarcoma and FUS-ERG in acute myeloid leukemia.

Bemerkenswerte Veröffentlichungen

Verfasser	Pubmed ID	Journal	Anwendung
Qiong Wang	36088396	Cell Biosci	WB
Yongbao Wei	32489464	J Cancer	WB
Feng Yao	35279683	Cell Death Discov	WB,IF

Lagerung

Lagerungsbedingungen:

Bei -20°C lagern. Nach dem Versand ein Jahr lang stabil

Lagerungspuffer:

PBS mit 0.02% Natriumazid und 50% Glycerin pH 7.3.

Aliquotieren ist nicht notwendig bei -20°C Lagerung

***** 20ul-Größen enthalten 0.1% BSA**

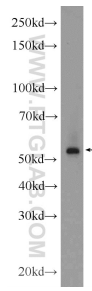
For technical support and original validation data for this product please contact:

T: 1 (888) 4PTGLAB (1-888-478-4522) (toll free
in USA), or 1(312) 455-8498 (outside USA)

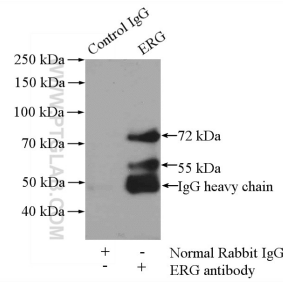
E: proteintech@ptglab.com
W: ptglab.com

**This product is exclusively available under Proteintech
Group brand and is not available to purchase from any
other manufacturer.**

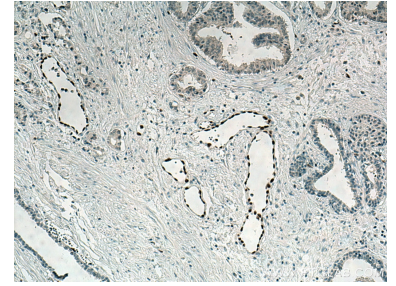
Ausgewählte Validierungsdaten



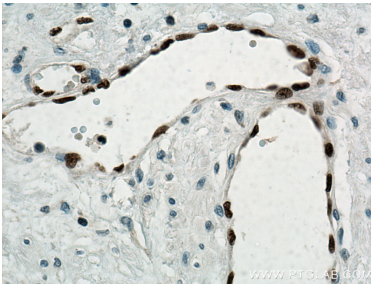
MCF-7 cells were subjected to SDS PAGE followed by western blot with 14356-1-AP (ERG Antibody) at dilution of 1:600 incubated at room temperature for 1.5 hours.



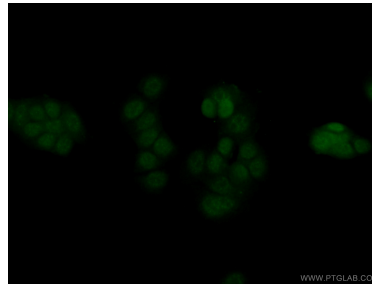
IP Result of anti-ERG (IP:14356-1-AP, 4ug; Detection:14356-1-AP 1:500) with MCF-7 cells lysate 800ug.



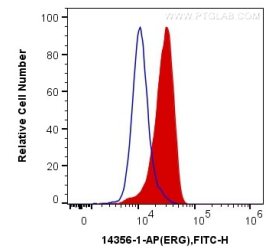
Immunohistochemical analysis of paraffin-embedded human prostate cancer tissue slide using 14356-1-AP (ERG antibody) at dilution of 1:1200 (under 10x lens). Heat mediated antigen retrieval with Tris-EDTA buffer (pH 9.0).



Immunohistochemical analysis of paraffin-embedded human prostate cancer tissue slide using 14356-1-AP (ERG antibody) at dilution of 1:1200 (under 40x lens). Heat mediated antigen retrieval with Tris-EDTA buffer (pH 9.0).



Immunofluorescent analysis of (4% PFA) fixed MCF-7 cells using 14356-1-AP (ERG antibody) at dilution of 1:50 and Alexa Fluor 488-Conjugated AffiniPure Goat Anti-Rabbit IgG(H+L).



1×10^6 MCF-7 cells were intracellularly stained with 0.4 ug Anti-Human ERG (14356-1-AP) and CoraLite®488-Conjugated AffiniPure Goat Anti-Rabbit IgG(H+L) at dilution 1:1000 (red), or 0.4 ug Control Antibody. Cells were fixed and permeabilized with Transcription Factor Staining Buffer Kit (PF00011).