

Nur für Forschungszwecke

# PKC Gamma Polyklonaler Antikörper



Katalog-Nr.:14364-1-AP

10 Publikationen

## Allgemeine Informationen

Katalog-Nr.:  
14364-1-AP

Größe:  
150ul, Konzentration: 500 µg/ml von  
Nanodrop und 253 µg/ml durch die  
Bradford-Methode mit BSA als  
Standard;

Wirt:  
Kaninchen

Isotyp:  
IgG

Immunogen Katalognummer:  
AG5681

GenBank-Zugangsnummer:  
BC047876

GeneID (NCBI):  
5582

Vollständiger Name:  
protein kinase C, gamma

Berechnete Masse:  
78 kDa

Beobachtete Masse:  
76-80 kDa

Reinigungsmethode:

Antigen-Affinitätsreinigung

Empfohlene Verdünnungen:

WB 1:5000-1:20000

IP 0.5-4.0 µg für IP und 1:500-1:1000  
für WB

IHC 1:50-1:500

IF 1:50-1:500

## Anwendungen

Geprüfte Anwendungen:

FC, IF, IHC, IP, WB, ELISA

In Publikationen genannte Anwendungen:

IF, IHC, WB

Getestete Reaktivität:

Human, Maus, Ratte

Zitierte Arten:

Human, Maus, Ratte

**Hinweis-IHC: Antigendemaskierung mit TE-Puffer pH 9,0 empfohlen. (\*) Wahlweise kann die Antigendemaskierung auch mit Citratpuffer pH 6,0 erfolgen.**

Positivkontrollen:

WB : Maushirngewebe, humanes Hirngewebe

IP : Maushirngewebe,

IHC : humanes Hirngewebe, humanes Cerebellum-Gewebe, Rattenhirngewebe

IF : HeLa-Zellen, SH-SY5Y-Zellen

## Hintergrundinformationen

Protein kinase C (PKC) is a family of serine- and threonine-specific protein kinases that can be activated by calcium and second messenger diacylglycerol. PKC family members phosphorylate a wide variety of protein targets and are known to be involved in diverse cellular signaling pathways. PKC gamma is a neuron-specific member of the classical PKCs and is activated and translocated to subcellular regions as a result of various stimuli, including diacylglycerol synthesis, increased intracellular Ca<sup>2+</sup> and phorbol esters. Defects in this protein have been associated with spinocerebellar ataxia type 14 (SCA14), an autosomal dominant neurodegenerative disease.

## Bemerkenswerte Veröffentlichungen

Verfasser	Pubmed ID	Journal	Anwendung
Shuyan Liu	36158087	Heliyon	WB
Guangming Zhang	34470528	Cell Transplant	WB
Xiao-Tian Liu	34634284	J Neurosci Methods	IF

## Lagerung

Lagerungsbedingungen:

Bei -20°C lagern. Nach dem Versand ein Jahr lang stabil

Lagerungspuffer:

PBS mit 0.02% Natriumazid und 50% Glycerin pH 7.3.

Aliquotieren ist nicht notwendig bei -20°C Lagerung

\*\*\* 20ul-Größen enthalten 0.1% BSA

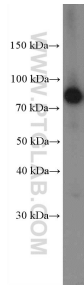
For technical support and original validation data for this product please contact:

T: 1 (888) 4PTGLAB (1-888-478-4522) (toll free  
in USA), or 1(312) 455-8498 (outside USA)

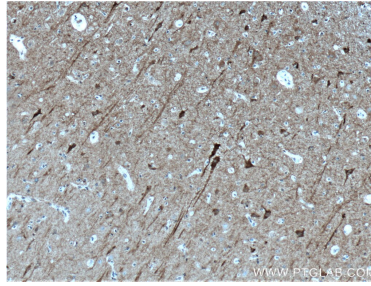
E: proteintech@ptglab.com  
W: ptglab.com

This product is exclusively available under Proteintech Group brand and is not available to purchase from any other manufacturer.

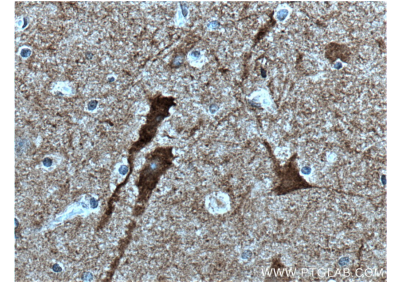
## Ausgewählte Validierungsdaten



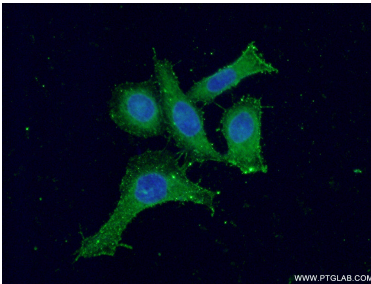
mouse brain tissue were subjected to SDS PAGE followed by western blot with 14364-1-AP (PKC gamma antibody) at dilution of 1:10000 incubated at room temperature for 1.5 hours.



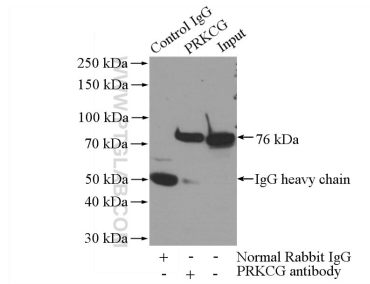
Immunohistochemical analysis of paraffin-embedded human brain tissue slide using 14364-1-AP (PKC gamma antibody) at dilution of 1:200 (under 10x lens. Heat mediated antigen retrieval with Tris-EDTA buffer (pH 9.0)).



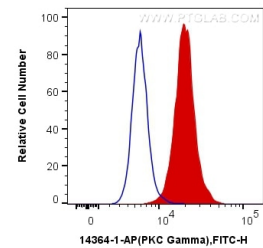
Immunohistochemical analysis of paraffin-embedded human brain tissue slide using 14364-1-AP (PKC gamma antibody) at dilution of 1:200 (under 40x lens. Heat mediated antigen retrieval with Tris-EDTA buffer (pH 9.0)).



Immunofluorescent analysis of (-20°C Ethanol) fixed HeLa cells using 14364-1-AP (PKC gamma antibody) at dilution of 1:50 and Alexa Fluor 488-conjugated AffiniPure Goat Anti-Rabbit IgG(H+L).



IP Result of anti-PKC gamma (IP:14364-1-AP, 4ug; Detection:14364-1-AP 1:500) with mouse brain tissue lysate 2640ug.



1X10<sup>6</sup> HeLa cells were intracellularly stained with 0.2 ug Anti-Human PKC Gamma (14364-1-AP) and CoraLite®488-Conjugated AffiniPure Goat Anti-Rabbit IgG(H+L) at dilution 1:1000 (red), or 0.2 ug Control Antibody. Cells were fixed with 4% PFA and permeabilized with Flow Cytometry Perm Buffer (PF00011-C).