

Allgemeine Informationen

Katalog-Nr.:
14372-1-AP

Größe:
150ul, Konzentration: 400 µg/ml von
Nanodrop und 207 µg/ml durch die
Bradford-Methode mit BSA als
Standard;

Wirt:
Kaninchen

Isotyp:
IgG

Immunogen Katalognummer:
AG5745

GenBank-Zugangsnummer:
BC052990

GeneID (NCBI):
8898

Vollständiger Name:
myotubularin related protein 2

Berechnete Masse:
73 kDa

Beobachtete Masse:
66-73 kDa

Reinigungsmethode:

Antigen-Affinitätsreinigung

Empfohlene Verdünnungen:

WB 1:500-1:2000

IP 0.5-4.0 µg für IP und 1:200-1:1000
für WB

IHC 1:100-1:400

Anwendungen

Geprüfte Anwendungen:

IHC, IP, WB, ELISA

Getestete Reaktivität:

Human, Maus, Ratte

Hinweis-IHC: Antigenmaskierung mit TE-Puffer pH 9,0 empfohlen. (*) Wahlweise kann die Antigenmaskierung auch mit Citratpuffer pH 6,0 erfolgen.

Positivkontrollen:

WB: HeLa-Zellen, humanes Cerebellum-Gewebe, NIH/3T3-Zellen

IP: Maus-Cerebellum-Gewebe,

IHC: humanes Endometriumkarzinomgewebe, humanes Cerebellum-Gewebe

Hintergrundinformationen

MTMR2(myotubularin-related protein 2) is also named as KIAA1073 and belongs to the non-receptor class myotubularin subfamily, which is characterized by the presence of a phosphatase domain. It may regulate vesicular trafficking in Schwann cells (PMID:17880751) and its reversible phosphorylation represents a critical mechanism for regulating the subcellular localization of MTMR2(PMID:21372139). MTMR2 is a 73 kDa protein in its monomeric form and exist as a dimer within cells and the protein re-localizes to membranes in hypo-osmotic settings(PMID:16399794). Defects in MTMR2 are the cause of Charcot-Marie-Tooth disease type 4B1 (CMT4B1). MTMR2 has two isoforms with the molecular mass of 73 and 66 kDa.

Lagerung

Lagerungsbedingungen:

Bei -20°C lagern. Nach dem Versand ein Jahr lang stabil

Lagerungspuffer:

PBS mit 0.02% Natriumazid und 50% Glycerin pH 7.3.

Aliquotieren ist nicht notwendig bei -20°C Lagerung

*** 20ul-Größen enthalten 0.1% BSA

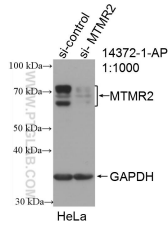
For technical support and original validation data for this product please contact:

T: 1 (888) 4PTGLAB (1-888-478-4522) (toll free
in USA), or 1(312) 455-8498 (outside USA)

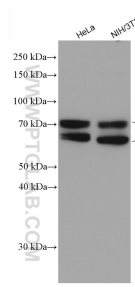
E: proteintech@ptglab.com
W: ptglab.com

This product is exclusively available under Proteintech Group brand and is not available to purchase from any other manufacturer.

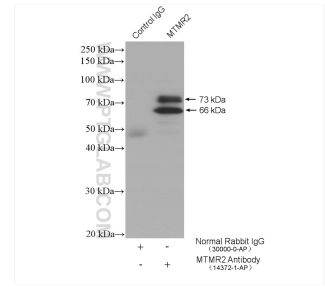
Ausgewählte Validierungsdaten



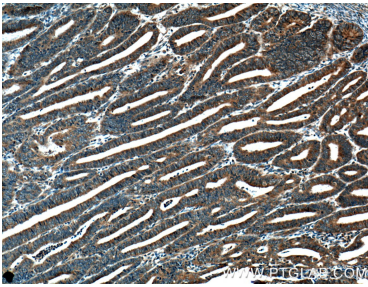
WB result of MTMR2 antibody (14372-1-AP; 1:1000; incubated at room temperature for 1.5 hours) with sh-Control and sh-MTMR2 transfected HeLa cells.



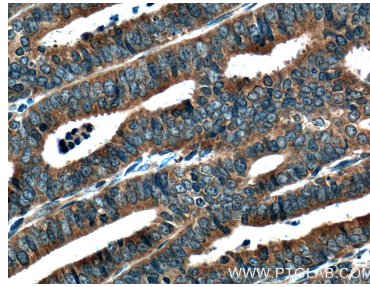
Various lysates were subjected to SDS PAGE followed by western blot with 14372-1-AP (MTMR2 antibody) at dilution of 1:1000 incubated at room temperature for 1.5 hours.



IP result of anti-MTMR2 (IP:14372-1-AP, 4ug; Detection:14372-1-AP 1:300) with mouse cerebellum tissue lysate 4000 ug.



Immunohistochemical analysis of paraffin-embedded human endometrial cancer tissue slide using 14372-1-AP (MTMR2 Antibody) at dilution of 1:200 (under 10x lens). Heat mediated antigen retrieval with Tris-EDTA buffer (pH 9.0).



Immunohistochemical analysis of paraffin-embedded human endometrial cancer tissue slide using 14372-1-AP (MTMR2 Antibody) at dilution of 1:200 (under 40x lens). Heat mediated antigen retrieval with Tris-EDTA buffer (pH 9.0).