

Nur für Forschungszwecke

smooth muscle actin Polyklonaler Antikörper



Katalog-Nr.: 14395-1-AP

Vorgestelltes Produkt

704 Publikationen

Allgemeine Informationen

Katalog-Nr.: 14395-1-AP	GenBank-Zugangsnummer: BC017554	Reinigungsmethode: Antigen-Affinitätsreinigung
Größe: 150ul , Konzentration: 500 µg/ml von Nanodrop;	GeneID (NCBI): 59	Empfohlene Verdünnungen: WB 1:1000-1:8000 IP 0.5-4.0 ug für IP und 1:500-1:2000 für WB
Wirt: Kaninchen	Vollständiger Name: actin, alpha 2, smooth muscle, aorta	IHC 1:1500-1:6000 IF 1:800-1:3200
Isotyp: IgG	Berechnete Masse: 377 aa, 42 kDa	
Immunogen Katalognummer: AG5886	Beobachtete Masse: 43 kDa	

Anwendungen

Geprüfte Anwendungen:

FC, IF, IHC, IP, WB, ELISA

In Publikationen genannte Anwendungen:

competitive binding assay, FC, IF, IHC, WB

Getestete Reaktivität:

Human, Maus, Ratte

Zitierte Arten:

Affe, Hausschwein, Human, Hund, Kaninchen, Maus, Ratte, Zebrafisch

Hinweis-IHC: Antigendemaskierung mit TE-Puffer pH 9,0 empfohlen. (*) Wahlweise kann die Antigendemaskierung auch mit Citratpuffer pH 6,0 erfolgen.

Positivkontrollen:

WB: Maus-Kolongewebe, A549-Zellen, humanes Plazenta-Gewebe, HUVEC-Zellen, Mäuserzgewebe, Mauslebergewebe, Mäusnierengewebe, Rattenherzgewebe, Ratten-Kolongewebe

IP: Mauslebergewebe,

IHC: humanes Leberkarzinomgewebe, humanes Herzgewebe, humanes Kolongewebe, humanes Uterusmyomgewebe, Stromatumorgewebe

IF: C2C12-Zellen, Maus-Dünndarmgewebe, Mäuserzgewebe

Hintergrundinformationen

ACTA2 (also known as α -smooth muscle actin or α -SMA) belongs to the actin family. Actins are highly conserved proteins that are involved in various types of cell motility and are ubiquitously expressed in all eukaryotic cells. ACTA2 is primarily expressed in vascular smooth muscle and anti-ACTA2 is commonly used to marker smooth muscle cells. This antibody may cross-react with other isoforms of actins.

Bemerkenswerte Veröffentlichungen

Verfasser	Pubmed ID	Journal	Anwendung
Mengru Xie	32999278	Int J Oral Sci	WB,IF
Aipeng Deng	33321619	Mater Sci Eng C Mater Biol Appl	IF
Hui-Fang Wang	28970011	Eur J Pharmacol	WB,IF

Lagerung

Lagerungsbedingungen:

Bei -20°C lagern. Nach dem Versand ein Jahr lang stabil

Lagerungspuffer:

PBS mit 0.02% Natriumazid und 50% Glycerin pH 7.3.

Aliquotieren ist nicht notwendig bei -20°C Lagerung

*** 20ul-Größen enthalten 0.1% BSA

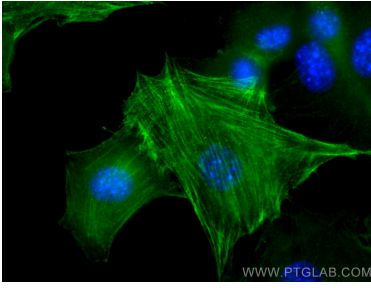
For technical support and original validation data for this product please contact:

T: 1 (888) 4PTGLAB (1-888-478-4522) (toll free in USA), or 1(312) 455-8498 (outside USA)

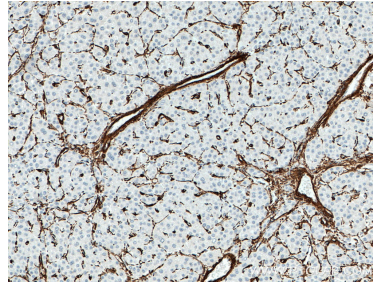
E: proteintech@ptglab.com
W: ptglab.com

This product is exclusively available under Proteintech Group brand and is not available to purchase from any other manufacturer.

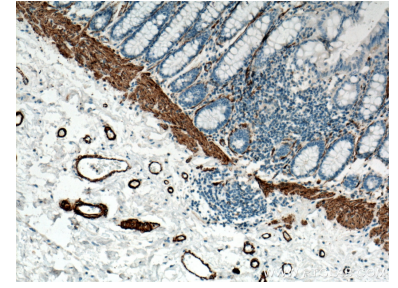
Ausgewählte Validierungsdaten



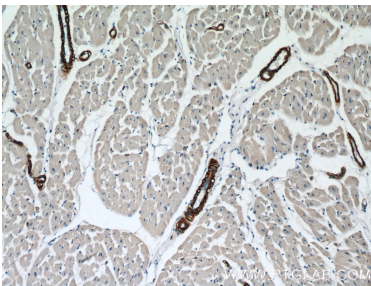
Immunofluorescent analysis of (-20°C Methanol) fixed C2C12 cells using smooth muscle actin antibody (14395-1-AP) at dilution of 1:1600 and CoraLite®488-Conjugated AffiniPure Goat Anti-Rabbit IgG(H+L).



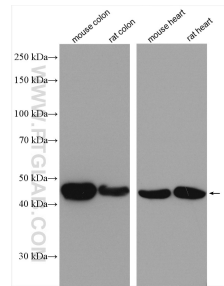
Immunohistochemical analysis of paraffin-embedded human liver cancer tissue slide using 14395-1-AP (ACTA2/smooth muscle actin antibody) at dilution of 1:3000 (under 10x lens. Heat mediated antigen retrieval with Tris-EDTA buffer (pH 9.0).



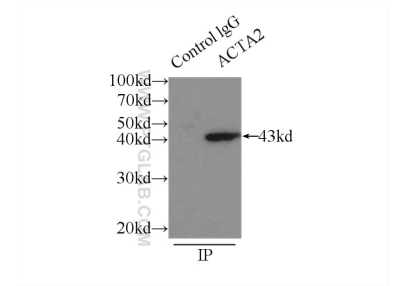
Immunohistochemical analysis of paraffin-embedded human colon tissue slide using 14395-1-AP (ACTA2/smooth muscle actin antibody) at dilution of 1:10000 (under 10x lens. Heat mediated antigen retrieval with Tris-EDTA buffer (pH 9.0).



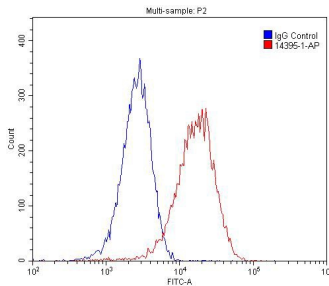
Immunohistochemical analysis of paraffin-embedded human heart tissue slide using 14395-1-AP (ACTA2/smooth muscle actin antibody) at dilution of 1:5000 (under 10x lens).



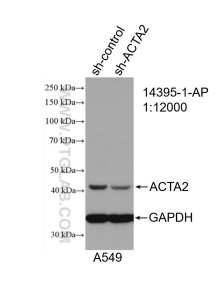
Various lysates were subjected to SDS PAGE followed by western blot with 14395-1-AP (smooth muscle actin antibody) at dilution of 1:6000 incubated at room temperature for 1.5 hours.



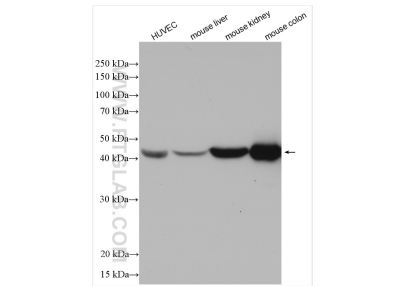
IP Result of anti-ACTA2/smooth muscle actin (IP:14395-1-AP, 3ug; Detection:14395-1-AP 1:1000) with mouse liver tissue lysate 6000ug.



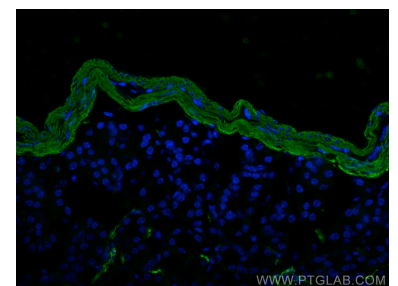
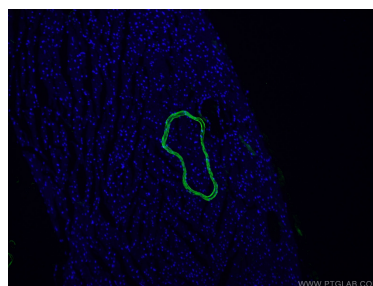
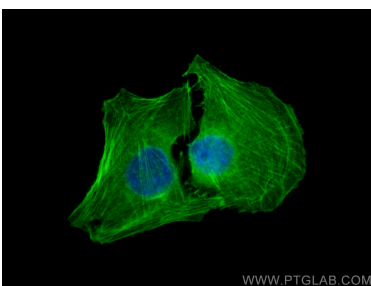
1X10⁶ C2C12 cell were stained with 0.2ug ACTA2/smooth muscle actin antibody (14395-1-AP, red) and control antibody (blue). Alexa Fluor 488-conjugated AffiniPure Goat Anti-Rabbit IgG(H+L) with dilution 1:1500. Cells were fixed with 4% PFA and permeabilized with 0.1% Triton X-100.



WB result of smooth muscle actin antibody (14395-1-AP; 1:12000; incubated at room temperature for 1.5 hours) with sh-Control and sh-smooth muscle actin transfected A549 cells.



Various lysates were subjected to SDS PAGE followed by western blot with 14395-1-AP (smooth muscle actin antibody) at dilution of 1:15000 incubated at room temperature for 1.5 hours.



Immunofluorescent analysis of (-20°C Methanol) fixed C2C12 cells using smooth muscle actin antibody (14395-1-AP) at dilution of 1:200 and CoraLite®488-Conjugated AffiniPure Goat Anti-Rabbit IgG(H+L).

Immunofluorescent analysis of (4% PFA) fixed mouse heart tissue using 14395-1-AP (smooth muscle actin antibody) at dilution of 1:50 and CoraLite488-Conjugated AffiniPure Goat Anti-Rabbit IgG(H+L).

Immunofluorescent analysis of (4% PFA) fixed mouse small intestine tissue using smooth muscle actin antibody (14395-1-AP) at dilution of 1:4000 and CoraLite®488-Conjugated AffiniPure Goat Anti-Rabbit IgG(H+L).