

Nur für Forschungszwecke

SCP2/SCPx Polyklonaler Antikörper

Katalog-Nr.:14397-1-AP



Allgemeine Informationen

Katalog-Nr.: 14397-1-AP	GenBank-Zugangsnummer: BC067108	Reinigungsmethode: Antigen-Affinitätsreinigung
Größe: 150ul , Konzentration: 600 µg/ml von Nanodrop und 267 µg/ml durch die Bradford-Methode mit BSA als Standard;	GeneID (NCBI): 6342	Empfohlene Verdünnungen: WB 1:300-1:1500 IF 1:10-1:100
Wirt: Kaninchen	Vollständiger Name: sterol carrier protein 2	
Isotyp: IgG	Berechnete Masse: 59 kDa	
Immunogen Katalognummer: AG5895	Beobachtete Masse: 44-46 kDa, 58 kDa	

Anwendungen

Geprüfte Anwendungen: IF, WB, ELISA	Positivkontrollen:
Getestete Reaktivität: Human, Maus, Ratte	WB : A549-Zellen, BxPC-3-Zellen, HepG2-Zellen, NIH/3T3-Zellen
	IF : BxPC-3-Zellen,

Hintergrundinformationen

SCP2 (Sterol carrier protein-2), also called nonspecific lipid-transfer protein, is thought to play a major role in intracellular lipid transport and metabolism. Mutations of SCP2 have been associated with diseases involving abnormalities in lipid trafficking, such as Zellweger syndrome. The alternative splicing generates 58 kDa SCPx and 13-15 kDa SCP2 proteins, both of which contain a C-terminal SCP2 domain. In addition to the SCP2 domain, SCPx also contains an amino-terminal thiolase domain. The proteolytic cleavage of SCPx occurred when it was imported into peroxisomes, giving rise to a 44-46 kDa thiolase and a 13-15 kDa SCP2. 14397-1-AP antibody recognizes the intact 58 kDa SCPx protein as well as 44-46 kDa thiolase.

Lagerung

Lagerungsbedingungen:
Bei -20°C lagern. Nach dem Versand ein Jahr lang stabil

Lagerungspuffer:
PBS mit 0.02% Natriumazid und 50% Glycerin pH 7.3.

Aliquotieren ist nicht notwendig bei -20°C Lagerung

*** 20ul-Größen enthalten 0.1% BSA

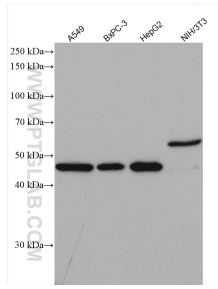
For technical support and original validation data for this product please contact:

T: 1 (888) 4PTGLAB (1-888-478-4522) (toll free
in USA), or 1(312) 455-8498 (outside USA)

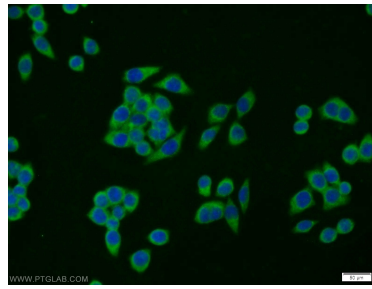
E: proteintech@ptglab.com
W: ptglab.com

This product is exclusively available under Proteintech Group brand and is not available to purchase from any other manufacturer.

Ausgewählte Validierungsdaten



Various lysates were subjected to SDS PAGE followed by western blot with 14397-1-AP (SCP2/SCPx antibody) at dilution of 1:1000 incubated at room temperature for 1.5 hours.



Immunofluorescent analysis of BxPC-3 cells using 14397-1-AP (SCP2 antibody) at dilution of 1:25 and Alexa Fluor 488-conjugated AffiniPure Goat Anti-Rabbit IgG(H+L).