

Allgemeine Informationen

Katalog-Nr.: 14398-1-AP	GenBank-Zugangsnummer: BC047902	Reinigungsmethode: Antigen-Affinitätsreinigung
Größe: 150ul , Konzentration: 350 µg/ml von Nanodrop und 280 µg/ml durch die Bradford-Methode mit BSA als Standard;	GeneID (NCBI): 197257	Empfohlene Verdünnungen: WB 1:1000-1:4000 IHC 1:50-1:500 IF 1:20-1:200
Wirt: Kaninchen	Vollständiger Name: lactate dehydrogenase D	
Isotyp: IgG	Berechnete Masse: 52 kDa	
Immunogen Katalognummer: AG5897	Beobachtete Masse: 45-54 kDa	

Anwendungen

Geprüfte Anwendungen: IF, IHC, WB, ELISA	Positivkontrollen:
Getestete Reaktivität: Human, Maus, Ratte	WB : Mauslebergewebe, HepG2-Zellen, Rattenlebergewebe
Hinweis-IHC: Antigendemaskierung mit TE- Puffer pH 9,0 empfohlen. (*) Wahlweise kann die Antigendemaskierung auch mit Citratpuffer pH 6,0 erfolgen.	IHC : humanes Leberkarzinomgewebe, humanes Osteosarkomgewebe
	IF : HepG2-Zellen,

Hintergrundinformationen

Two naturally occurring forms of lactate dehydrogenase with similar but unique substrate specificities have been isolated in lower organisms including invertebrates, fungi, and prokaryotes. These dehydrogenase enzymes are L-lactate dehydrogenase and D-lactate dehydrogenase (LDHD) that are specific to the L and D isomers of lactate, respectively (PMID: 12127981). In lactic acid bacteria, LDHD plays a key role in anaerobic energy metabolism (PMID: 497162). Despite the identification of D-lactate and other D-2-hydroxyacids in prokaryotes, and the obvious connections and similarities to vertebrate metabolic pathways, very few mammalian D-2-hydroxyacid dehydrogenases have been found. LDHD has 2 isoforms with the molecular weight of 52 and 54kDa, and can be detected as 45-54 kDa.

Lagerung

Lagerungsbedingungen:
Bei -20°C lagern. Nach dem Versand ein Jahr lang stabil
Lagerungspuffer:
PBS mit 0.02% Natriumazid und 50% Glycerin pH 7.3.
Aliquotieren ist nicht notwendig bei -20°C Lagerung

*** 20ul-Größen enthalten 0.1% BSA

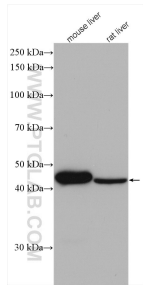
For technical support and original validation data for this product please contact:

T: 1 (888) 4PTGLAB (1-888-478-4522) (toll free
in USA), or 1(312) 455-8498 (outside USA)

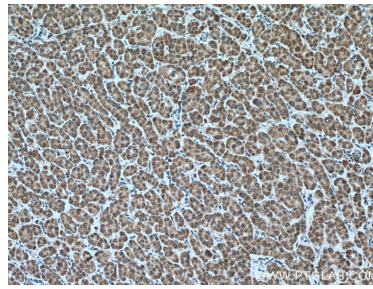
E: proteintech@ptglab.com
W: ptglab.com

This product is exclusively available under Proteintech Group brand and is not available to purchase from any other manufacturer.

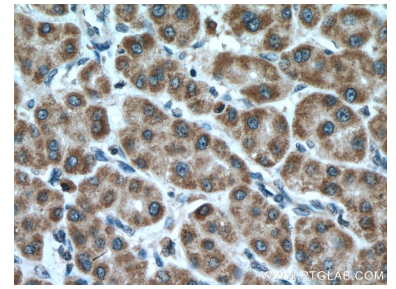
Ausgewählte Validierungsdaten



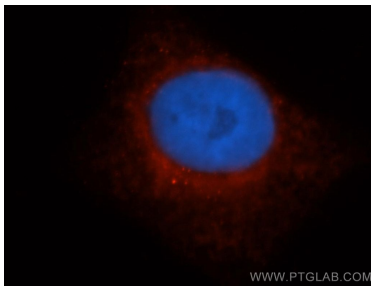
Various lysates were subjected to SDS PAGE followed by western blot with 14398-1-AP (LDHD antibody) at dilution of 1:2000 incubated at room temperature for 1.5 hours.



Immunohistochemical analysis of paraffin-embedded human liver cancer tissue slide using 14398-1-AP (LDHD antibody) at dilution of 1:200 (under 10x lens). Heat mediated antigen retrieval with Tris-EDTA buffer (pH 9.0).



Immunohistochemical analysis of paraffin-embedded human liver cancer tissue slide using 14398-1-AP (LDHD antibody) at dilution of 1:200 (under 40x lens). Heat mediated antigen retrieval with Tris-EDTA buffer (pH 9.0).



Immunofluorescent analysis of HepG2 cells, using LDHD antibody 14398-1-AP at 1:50 dilution and Rhodamine-labeled goat anti-rabbit IgG (red). Blue pseudocolor = DAPI (fluorescent DNA dye).