

Nur für Forschungszwecke

# RBM10 Polyklonaler Antikörper

Katalog-Nr.: 14423-1-AP

Vorgestelltes Produkt

5 Publikationen



## Allgemeine Informationen

Katalog-Nr.:  
14423-1-AP

Größe:

150ul, Konzentration: 850 µg/ml von  
Nanodrop und 420 µg/ml durch die  
Bradford-Methode mit BSA als  
Standard;

Wirt:

Kaninchen

Isotyp:

IgG

Immunogen Katalognummer:  
AG5788

GenBank-Zugangsnummer:

BC024153

GeneID (NCBI):

8241

Vollständiger Name:

RNA binding motif protein 10

Berechnete Masse:

104 kDa

Beobachtete Masse:

115 kDa

Reinigungsmethode:

Antigen-Affinitätsreinigung

Empfohlene Verdünnungen:

WB 1:500-1:2000

IP 0.5-4.0 µg für IP und 1:500-1:1000  
für WB

IF 1:50-1:500

## Anwendungen

Geprüfte Anwendungen:

IF, IP, WB, ELISA

In Publikationen genannte Anwendungen:

IHC, IP, RIP, WB

Getestete Reaktivität:

Human, Maus, Ratte

Zitierte Arten:

Human

Positivkontrollen:

WB : humanes Hirngewebe,

IP : Maushirngewebe,

IF : Maushirngewebe,

## Hintergrundinformationen

RBM10, also named as RNA-binding protein 10, is a 930 amino acid protein, which is in the extranucleolar nucleoplasm constitutes hundreds of nuclear domains, which dynamically change their structures in a reversible manner. RBM10 may be involved in post-transcriptional processing, most probably in mRNA splicing. RBM10 has some isoforms with MV 130 and 115 kDa (PMID: 25889998 and PMID: 18315527).

## Bemerkenswerte Veröffentlichungen

Verfasser	Pubmed ID	Journal	Anwendung
Ji Hoon Jung	31591476	Oncogene	WB
Shan Cong	36335386	Cancer Cell Int	WB,IHC,RIP
Leslie C Sutherland	28728573	BMC Mol Biol	WB

## Lagerung

Lagerungsbedingungen:

Bei -20°C lagern. Nach dem Versand ein Jahr lang stabil

Lagerungspuffer:

PBS mit 0.02% Natriumazid und 50% Glycerin pH 7.3.

Aliquotieren ist nicht notwendig bei -20°C Lagerung

\*\*\* 20ul-Größen enthalten 0.1% BSA

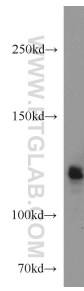
For technical support and original validation data for this product please contact:

T: 1 (888) 4PTGLAB (1-888-478-4522) (toll free  
in USA), or 1(312) 455-8498 (outside USA)

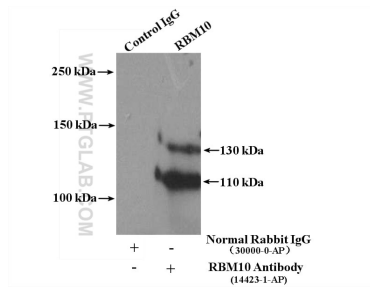
E: proteintech@ptglab.com  
W: ptglab.com

This product is exclusively available under Proteintech Group brand and is not available to purchase from any other manufacturer.

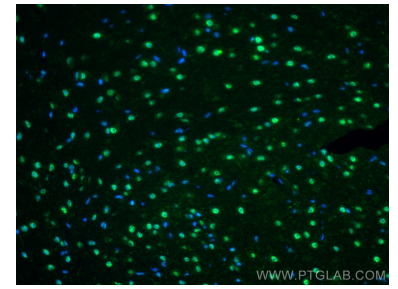
## Ausgewählte Validierungsdaten



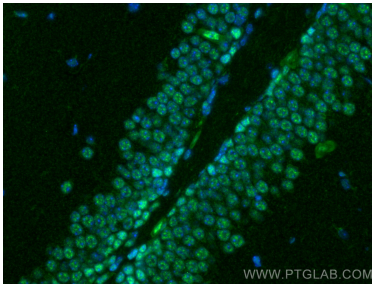
human brain tissue were subjected to SDS PAGE followed by western blot with 14423-1-AP (RBM10 antibody) at dilution of 1:1000 incubated at room temperature for 1.5 hours.



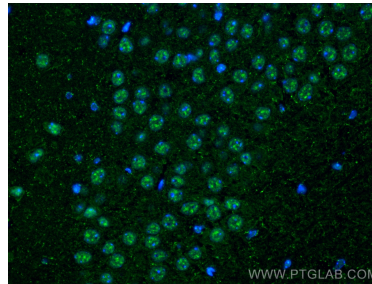
IP Result of anti-RBM10 (IP:14423-1-AP, 4ug; Detection:14423-1-AP 1:800) with mouse brain tissue lysate 4000ug.



Immunofluorescent analysis of (4% PFA) fixed mouse brain tissue using RBM10 antibody (14423-1-AP) at dilution of 1:200 and CoraLite@488-Conjugated AffiniPure Goat Anti-Rabbit IgG(H+L).



Immunofluorescent analysis of (4% PFA) fixed mouse brain tissue using RBM10 antibody (14423-1-AP) at dilution of 1:200 and CoraLite@488-Conjugated AffiniPure Goat Anti-Rabbit IgG(H+L).



Immunofluorescent analysis of (4% PFA) fixed mouse brain tissue using RBM10 antibody (14423-1-AP) at dilution of 1:200 and CoraLite@488-Conjugated AffiniPure Goat Anti-Rabbit IgG(H+L).