

Nur für Forschungszwecke

Phospho-RCC1 (Ser11) Polyklonaler Antikörper



Katalog-Nr.:14444-1-AP

Allgemeine Informationen

Katalog-Nr.: 14444-1-AP	GenBank-Zugangsnummer: NM_001048194	Reinigungsmethode: Antigen-Affinitätsreinigung
Größe: 100ul, Konzentration: 750 µg/ml von Nanodrop;	GeneID (NCBI): 1104	Empfohlene Verdünnungen: WB 1:500-1:2000 IHC 1:50-1:500 IF 1:50-1:500
Wirt: Kaninchen	Vollständiger Name: regulator of chromosome condensation 1	
Isotyp: IgG	Berechnete Masse: 48 kDa	
	Beobachtete Masse: 45-50 kDa	

Anwendungen

Geprüfte Anwendungen:

IF, IHC, WB, ELISA

Getestete Reaktivität:

Human, Maus, Ratte

Hinweis-IHC: Antigendemaskierung mit TE-Puffer pH 9,0 empfohlen. (*) Wahlweise kann die Antigendemaskierung auch mit Citratpuffer pH 6,0 erfolgen.

Positivkontrollen:

WB : HEK-293-Zellen, HeLa-Zellen, HepG2-Zellen

IHC : humanes Ovarialkarzinomgewebe,

IF : HeLa-Zellen,

Hintergrundinformationen

CHC1, also named as RCC1, promotes the exchange of ran-bound gdp by gtp. It is involved in the regulation of onset of chromosome condensation in the S-phase. Phosphorylation of RCC1 on serines located in or near its nuclear localization signal activates RCC1 to generate RanGTP on mitotic chromosomes, which is required for spindle assembly and chromosome segregation. This antibody is a rabbit polyclonal antibody raised against human phospho-CHC1(Ser11) antigen.

Lagerung

Lagerungsbedingungen:

Bei -20°C lagern. Nach dem Versand ein Jahr lang stabil

Lagerungspuffer:

PBS mit 0.02% Natriumazid und 50% Glycerin pH 7.3.

Aliquotieren ist nicht notwendig bei -20°C Lagerung

*** 20ul-Größen enthalten 0.1% BSA

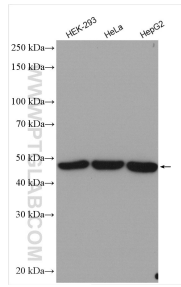
For technical support and original validation data for this product please contact:

T: 1 (888) 4PTGLAB (1-888-478-4522) (toll free in USA), or 1(312) 455-8498 (outside USA)

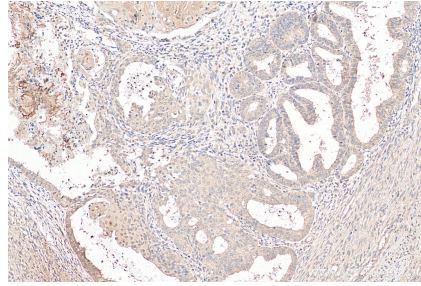
E: proteintech@ptglab.com
W: ptglab.com

This product is exclusively available under Proteintech Group brand and is not available to purchase from any other manufacturer.

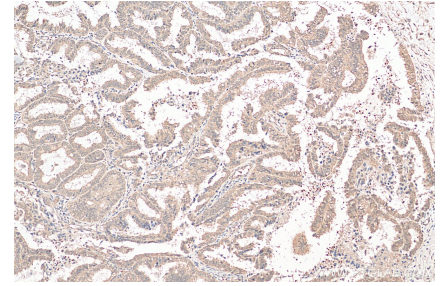
Ausgewählte Validierungsdaten



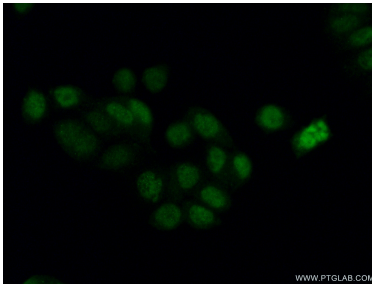
Various lysates were subjected to SDS PAGE followed by western blot with 14444-1-AP (Phospho-RCC1 (Ser11) antibody) at dilution of 1:1000 incubated at room temperature for 1.5 hours.



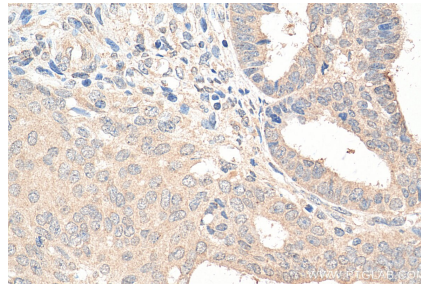
Immunohistochemical analysis of paraffin-embedded human ovary tumor tissue slide using 14444-1-AP (Phospho-RCC1 (Ser11) antibody) at dilution of 1:200 (under 10x lens). Heat mediated antigen retrieval with Tris-EDTA buffer (pH 9.0).



Immunohistochemical analysis of paraffin-embedded human ovary tumor tissue slide using 14444-1-AP (Phospho-RCC1 (Ser11) antibody) at dilution of 1:200 (under 10x lens). Heat mediated antigen retrieval with Tris-EDTA buffer (pH 9.0).



Immunofluorescent analysis of (10% Formaldehyde) fixed HeLa cells using 14444-1-AP (Phospho-RCC1(Ser12) antibody) at dilution of 1:50 and Alexa Fluor 488-conjugated AffiniPure Goat Anti-Rabbit IgG(H+L).



Immunohistochemical analysis of paraffin-embedded human ovary tumor tissue slide using 14444-1-AP (Phospho-RCC1 (Ser11) antibody) at dilution of 1:200 (under 40x lens). Heat mediated antigen retrieval with Tris-EDTA buffer (pH 9.0).