

Allgemeine Informationen

Katalog-Nr.: 14476-1-AP	GenBank-Zugangsnummer: BC053359	Reinigungsmethode: Antigen-Affinitätsreinigung
Größe: 150ul, Konzentration: 133 µg/ml von Nanodrop und 133 µg/ml durch die Bradford-Methode mit BSA als Standard;	GeneID (NCBI): 84458	Empfohlene Verdünnungen: WB 1:200-1:1000 IHC 1:20-1:200 IF 1:50-1:500
Wirt: Kaninchen	Vollständiger Name: ligand dependent nuclear receptor corepressor	
Isotyp: IgG	Berechnete Masse: 47 kDa	
Immunogen Katalognummer: AG5851	Beobachtete Masse: 50 kDa	

Anwendungen

Geprüfte Anwendungen: IF, IHC, WB, ELISA	Positivkontrollen: WB : HeLa-Zellen, IHC : humanes Endometriumkarzinomgewebe, IF : HeLa-Zellen,
Getestete Reaktivität: Human, Maus, Ratte	
Hinweis-IHC: Antigenmaskierung mit TE-Puffer pH 9,0 empfohlen. (*) Wahlweise kann die Antigenmaskierung auch mit Citratpuffer pH 6,0 erfolgen.	

Hintergrundinformationen

LCOR is a transcriptional corepressor widely expressed in fetal and adult tissues that is recruited to agonist-bound nuclear receptors through a single LxxLL motif, also referred to as a nuclear receptor (NR) box [PMID:12535528]. It functions through recruitment of C-terminal binding proteins (CtBPs) and histone deacetylases (HDACs) to its N-terminal and central domains, respectively [PMID:22277651]. It is a scaffold for both histone deacetylases (HDACs) and C-terminal binding protein (CtBP) corepressors and functions by both HDAC-dependent and -independent mechanisms in a receptor-specific manner [PMID:19744932].

Lagerung

Lagerungsbedingungen:
Bei -20°C lagern. Nach dem Versand ein Jahr lang stabil
Lagerungspuffer:
PBS mit 0.02% Natriumazid und 50% Glycerin pH 7.3.
Aliquotieren ist nicht notwendig bei -20°C Lagerung

*** 20ul-Größen enthalten 0.1% BSA

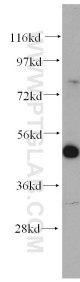
For technical support and original validation data for this product please contact:

T: 1 (888) 4PTGLAB (1-888-478-4522) (toll free in USA), or 1(312) 455-8498 (outside USA)

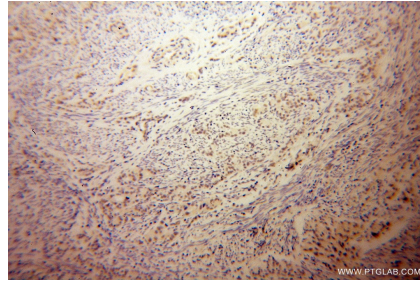
E: proteintech@ptglab.com
W: ptglab.com

This product is exclusively available under Proteintech Group brand and is not available to purchase from any other manufacturer.

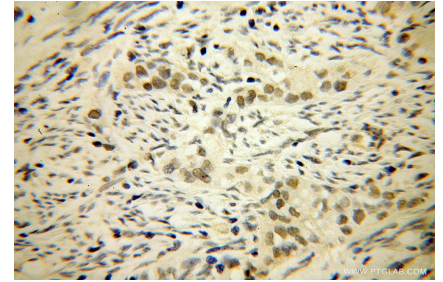
Ausgewählte Validierungsdaten



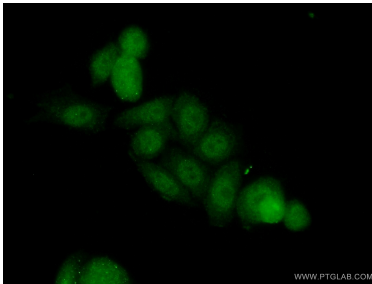
HeLa cells were subjected to SDS PAGE followed by western blot with 14476-1-AP (LCOR antibody) at dilution of 1:300 incubated at room temperature for 1.5 hours.



Immunohistochemical analysis of paraffin-embedded human endometrial cancer using 14476-1-AP (LCOR antibody) at dilution of 1:50 (under 10x lens).



Immunohistochemical analysis of paraffin-embedded human endometrial cancer using 14476-1-AP (LCOR antibody) at dilution of 1:50 (under 40x lens).



Immunofluorescent analysis of (10% Formaldehyde) fixed HeLa cells using 14476-1-AP (LCOR antibody) at dilution of 1:50 and Alexa Fluor 488-conjugated AffiniPure Goat Anti-Rabbit IgG(H+L).