

Nur für Forschungszwecke

Calbindin-D28k Polyklonaler Antikörper



Katalog-Nr.:14479-1-AP

Vorgestelltes Produkt

18 Publikationen

Allgemeine Informationen

Katalog-Nr.:
14479-1-AP

Größe:
150ul, Konzentration: 300 µg/ml von
Nanodrop;

Wirt:
Kaninchen

Isotyp:
IgG

Immunogen Katalognummer:
AG5861

GenBank-Zugangsnummer:
BC006478

GeneID (NCBI):
793

Vollständiger Name:
calbindin 1, 28kDa

Berechnete Masse:
30 kDa

Beobachtete Masse:
28 kDa

Reinigungsmethode:

Antigen-Affinitätsreinigung

Empfohlene Verdünnungen:

WB 1:1000-1:8000

IP 0.5-4.0 µg für IP und 1:500-1:2000
für WB

IHC 1:1000-1:4000

IF 1:50-1:500

Anwendungen

Geprüfte Anwendungen:

IF, IHC, IP, WB, ELISA

In Publikationen genannte Anwendungen:

IF, IHC, WB

Getestete Reaktivität:

Human, Maus, Ratte

Zitierte Arten:

Human, Maus, Ratte

Hinweis-IHC: Antigendemaskierung mit TE-Puffer pH 9,0 empfohlen. (*) Wahlweise kann die Antigendemaskierung auch mit Citratpuffer pH 6,0 erfolgen.

Positivkontrollen:

WB: Maushirngewebe, humanes Hirngewebe, humanes Nierengewebe, Rattenhirngewebe

IP: Maushirngewebe,

IHC: humanes Cerebellum-Gewebe, humanes Hirngewebe, humanes Nierengewebe, Maus-Cerebellum-Gewebe, Mausnierengewebe, Ratten-Cerebellum-Gewebe, Rattennierengewebe

IF: Maus-Cerebellum-Gewebe, humanes Nierengewebe

Hintergrundinformationen

Calbindin-D28k is a member of the calcium-binding protein superfamily that includes calmodulin and troponin C. It is a cytosolic calcium binding protein highly expressed in the distal tubule, intestines, central nervous system, primary murine osteoblast cells and in several other organs. It plays an important role in the intracellular calcium homeostasis, its strong buffering capacity prevents cytotoxic effect of high concentration of free calcium in kidney, brain, pancreas, and intestine.

Bemerkenswerte Veröffentlichungen

Verfasser	Pubmed ID	Journal	Anwendung
Takahiro Seki	30342995	Mol Cell Neurosci	IF
Rui Zhang	34762817	Mol Ther	IHC,IF
Biji Mathew	32452260	Autophagy	IF

Lagerung

Lagerungsbedingungen:

Bei -20°C lagern. Nach dem Versand ein Jahr lang stabil

Lagerungspuffer:

PBS mit 0.02% Natriumazid und 50% Glycerin pH 7.3.

Aliquotieren ist nicht notwendig bei -20°C Lagerung

*** 20ul-Größen enthalten 0.1% BSA

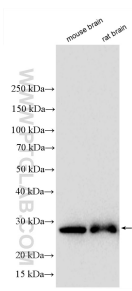
For technical support and original validation data for this product please contact:

T: 1 (888) 4PTGLAB (1-888-478-4522) (toll free in USA), or 1(312) 455-8498 (outside USA)

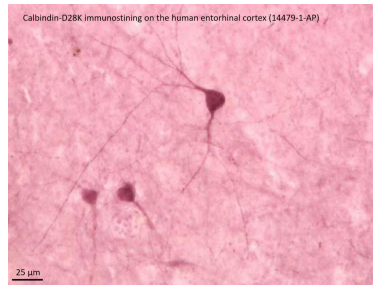
E: proteintech@ptglab.com
W: ptglab.com

This product is exclusively available under Proteintech Group brand and is not available to purchase from any other manufacturer.

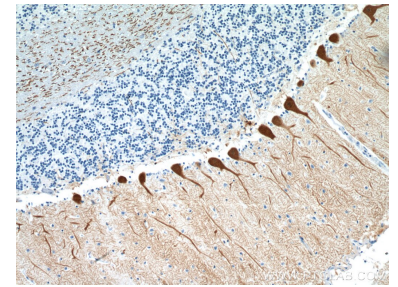
Ausgewählte Validierungsdaten



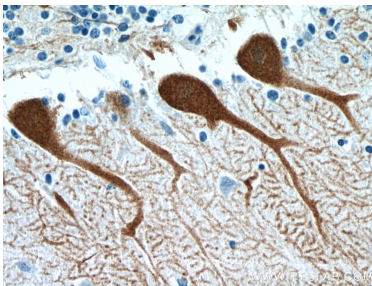
Various lysates were subjected to SDS PAGE followed by western blot with 14479-1-AP (Calbindin-D28k antibody) at dilution of 1:4000 incubated at room temperature for 1.5 hours.



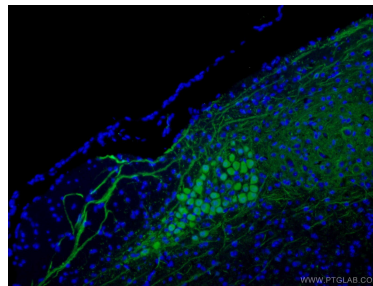
IHC result of Calbindin antibody (14479-1-AP, 1:5000 in 1% BSA 0.3%Tx-100 Tris buffer incubated at 4°C overnight) with freshly formalin fixed human hippocampus (floating section). Secondary antibody biotinylated anti-rabbit IgG 1:200 in 1% BSA 0.3%Tx-100 Tris buffer for 2 hours at room temperature.



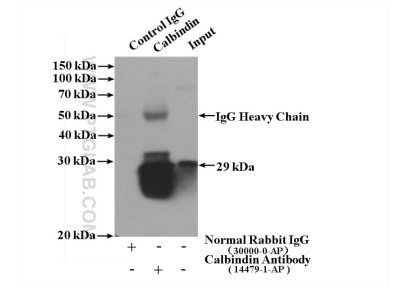
Immunohistochemical analysis of paraffin-embedded human cerebellum tissue slide using 14479-1-AP (Calbindin-D28k antibody) at dilution of 1:2000 (under 10x lens).



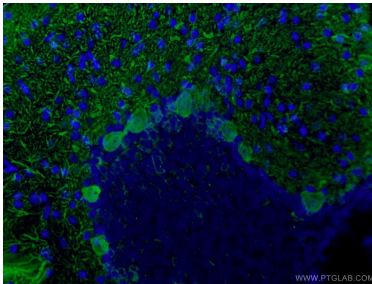
Immunohistochemical analysis of paraffin-embedded human cerebellum tissue slide using 14479-1-AP (Calbindin-D28k antibody) at dilution of 1:2000 (under 40x lens).



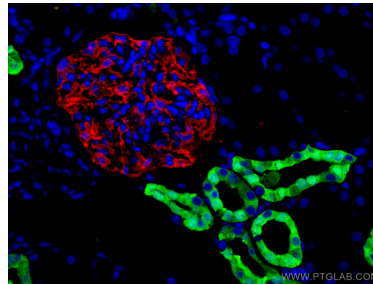
Immunofluorescent analysis of (4% PFA) fixed mouse cerebellum tissue using 14479-1-AP (Calbindin-D28k antibody) at dilution of 1:100 and Alexa Fluor 488-conjugated AffiniPure Goat Anti-Rabbit IgG(H+L).



IP Result of anti-Calbindin-D28k (IP:14479-1-AP, 4µg; Detection:14479-1-AP 1:1000) with mouse brain tissue lysate 4000µg.



Immunofluorescent analysis of (4% PFA) fixed mouse cerebellum tissue using 14479-1-AP (Calbindin-D28k antibody) at dilution of 1:100 and Alexa Fluor 488-conjugated AffiniPure Goat Anti-Rabbit IgG(H+L).



Immunofluorescent analysis of (4% PFA) fixed human kidney tissue using Calbindin-D28k antibody (14479-1-AP) at dilution of 1:200 and CoraLite®488-Conjugated AffiniPure Goat Anti-Rabbit IgG(H+L), PTPRO antibody (67000-1-Ig, Clone: 2F2B4, red).