

Nur für Forschungszwecke

p70(S6K) Polyklonaler Antikörper

Katalog-Nr.:14485-1-AP

Vorgestelltes Produkt

132 Publikationen



Allgemeine Informationen

Katalog-Nr.: 14485-1-AP	GenBank-Zugangsnummer: BC053365	Reinigungsmethode: Antigen-Affinitätsreinigung
Größe: 150ul , Konzentration: 500 µg/ml von Nanodrop;	GeneID (NCBI): 6198	Empfohlene Verdünnungen: WB 1:2000-1:8000 IP 0.5-4.0 ug für IP und 1:500-1:2000 für WB
Wirt: Kaninchen	Vollständiger Name: ribosomal protein S6 kinase, 70kDa, polypeptide 1	IHC 1:50-1:500 IF 1:10-1:100
Isotyp: IgG	Berechnete Masse: 59 kDa	
Immunogen Katalognummer: AG5883	Beobachtete Masse: 65-75 kDa, 80-85 kDa	

Anwendungen

Geprüfte Anwendungen:

FC, IF, IHC, IP, WB, ELISA

In Publikationen genannte Anwendungen:

IF, IHC, WB

Getestete Reaktivität:

Human, Maus, Ratte

Zitierte Arten:

Hausschwein, Human, Kaninchen, Maus, Ratte, Riesenscheibenbrasse (Megalobrama Amblycephala)

Hinweis-IHC: Antigenmaskierung mit TE-Puffer pH 9,0 empfohlen. (*) Wahlweise kann die Antigenmaskierung auch mit Citratpuffer pH 6,0 erfolgen.

Positivkontrollen:

WB: HEK-293-Zellen, C6-Zellen, HeLa-Zellen, Maushirngewebe, MCF-7-Zellen, Mit IGF-1 behandelte MCF-7-Zellen, PC-12-Zellen, Rattenhirngewebe

IP: HeLa-Zellen,

IHC: humanes Leberkarzinomgewebe,

IF: HepG2-Zellen,

Hintergrundinformationen

RPS6KB1 (Ribosomal protein S6 kinase beta-1) is also named as STK14A, p70 S6KA, and belongs to the S6 kinase subfamily. RPS6KB1 is a major substrate of mTOR and acts as a crucial effector of mTOR signaling pathway. It plays a key role in cell growth and proliferation by regulating INS sensitivity, metabolism, protein synthesis, and cell cycle. RPS6KB1 may play an important role in the progression of HCC and could serve as a potential molecular target for HCC therapy (PMID:22684641). The Rps6kb1 gene encodes the 70 kDa ribosomal protein S6 kinase (p70S6K). The PI3K/mTOR signalling pathway is one of the major mechanisms for controlling cell survival, proliferation, and metabolism and is the central regulator of translation of some components of the protein synthesis system. Due to alternative translation, two isoform S6K1 proteins are known to exist in mammalian cells: p85 S6K1 and p70 S6K1, which is identical to p85 S6K but lacks its first 23 amino acids. In addition, mammalian cells express a second S6K1 isoform spanning 316 amino acids (p31 S6K1).

Bemerkenswerte Veröffentlichungen

Verfasser	Pubmed ID	Journal	Anwendung
Jing Chen	34650978	Front Cell Dev Biol	WB
Yancun Yin	30310320	Cancer Manag Res	WB
Genquan Yue	31702026	Mol Med Rep	WB

Lagerung

Lagerungsbedingungen:

Bei -20°C lagern. Nach dem Versand ein Jahr lang stabil

Lagerungspuffer:

PBS mit 0.02% Natriumazid und 50% Glycerin pH 7.3.

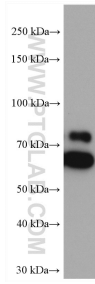
Aliquotieren ist nicht notwendig bei -20°C Lagerung

***** 20ul-Größen enthalten 0.1% BSA**

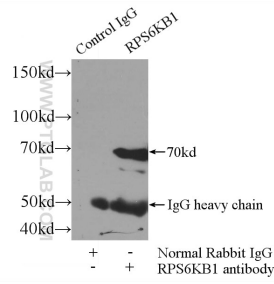
For technical support and original validation data for this product please contact:
T: 1 (888) 4PTGLAB (1-888-478-4522) (toll free in USA), or 1(312) 455-8498 (outside USA)
E: proteintech@ptglab.com
W: ptglab.com

This product is exclusively available under Proteintech Group brand and is not available to purchase from any other manufacturer.

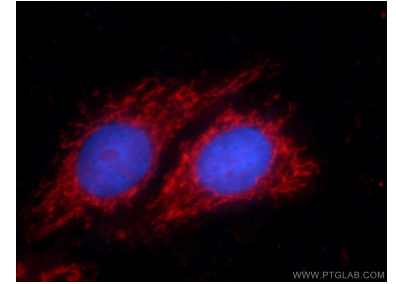
Ausgewählte Validierungsdaten



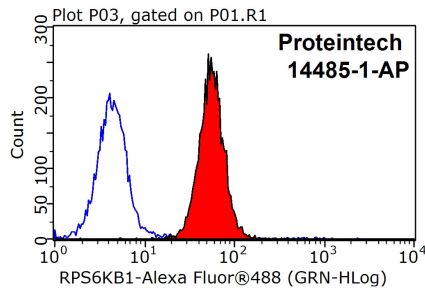
MCF-7 cells were subjected to SDS PAGE followed by western blot with 14485-1-AP (p70(S6K) antibody) at dilution of 1:4000 incubated at room temperature for 1.5 hours.



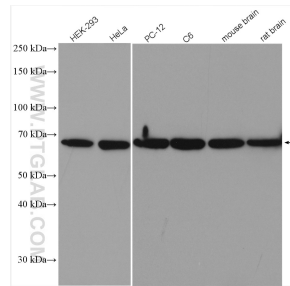
IP Result of anti-p70S6K (IP:14485-1-AP, 3ug; Detection:14485-1-AP 1:1000) with HeLa cells lysate 3000ug.



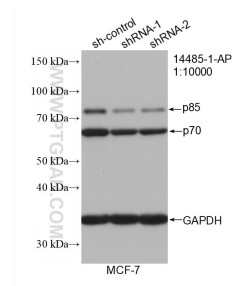
Immunofluorescent analysis of HepG2 cells using 14485-1-AP (p70S6K antibody) at dilution of 1:25 and Rhodamine-Goat anti-Rabbit IgG.



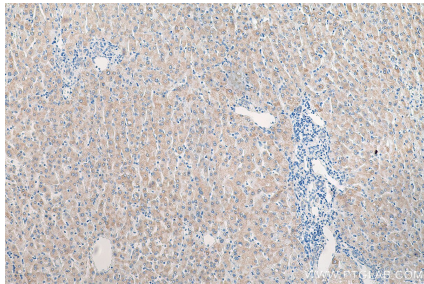
1X10⁶ HepG2 cells were stained with 0.2ug p70S6K antibody (14485-1-AP, red) and control antibody (blue). Fixed with 90% MeOH blocked with 3% BSA (30 min). Alexa Fluor 488-conjugated AffiniPure Goat Anti-Rabbit IgG(H+L) with dilution 1:1500.



Various lysates were subjected to SDS PAGE followed by western blot with 14485-1-AP (p70(S6K) antibody) at dilution of 1:4000 incubated at room temperature for 1.5 hours.



WB result of p70(S6K) antibody (14485-1-AP; 1:10000; incubated at room temperature for 1.5 hours) with sh-Control and sh-p70(S6K) transfected MCF-7 cells.



Immunohistochemical analysis of paraffin-embedded human liver cancer tissue slide using 14485-1-AP (p70(S6K) antibody) at dilution of 1:200 (under 10x lens). Heat mediated antigen retrieval with Tris-EDTA buffer (pH 9.0).