

Nur für Forschungszwecke

NR1D1 Polyklonaler Antikörper

Katalog-Nr.:14506-1-AP

Vorgestelltes Produkt

16 Publikationen



Allgemeine Informationen

Katalog-Nr.:
14506-1-AP

Größe:
150ul, Konzentration: 400 µg/ml von
Nanodrop und 260 µg/ml durch die
Bradford-Methode mit BSA als
Standard;

Wirt:
Kaninchen

Isotyp:
IgG

Immunogen Katalognummer:
AG5964

GenBank-Zugangsnummer:
BC056148

GeneID (NCBI):
9572

Vollständiger Name:
nuclear receptor subfamily 1, group D,
member 1

Berechnete Masse:
67 kDa

Beobachtete Masse:
55-68 kDa

Reinigungsmethode:

Antigen-Affinitätsreinigung

Empfohlene Verdünnungen:

WB 1:1000-1:4000
IP 0.5-4.0 µg für IP und 1:200-1:1000
für WB
IF 1:50-1:500

Anwendungen

Geprüfte Anwendungen:

IF, IP, WB, ELISA

In Publikationen genannte Anwendungen:

ChIP, IF, IHC, WB

Getestete Reaktivität:

Human, Maus

Zitierte Arten:

Human, Maus, Ratte

Positivkontrollen:

WB : A549-Zellen, HeLa-Zellen, HepG2-Zellen, Jurkat-Zellen, NIH/3T3-Zellen, Y79-Zellen

IP : A549-Zellen,

IF : NIH/3T3-Zellen,

Hintergrundinformationen

NR1D1, also named as EAR1, THRAL, ear-1 and hRev, contains one nuclear receptor DNA-binding domain and belongs to the nuclear hormone receptor family. NR1 subfamily. This protein functions as a constitutive transcriptional repressor. It is a possible receptor for triiodothyronine. Rev-erba itself is activated by BMAL1-CLOCK and thereby represents the link between the positive and negative loops of the circadian clock. This is a rabbit polyclonal antibody raised against the N terminus of human NR1D1.

Bemerkenswerte Veröffentlichungen

Verfasser	Pubmed ID	Journal	Anwendung
Xuekai Xiong	36093830	J Cell Sci	WB
Da-Yoon Jang	36048349	Neurochem Res	WB
Hao-Yu Liu	34722605	Front Nutr	ChIP

Lagerung

Lagerungsbedingungen:

Bei -20°C lagern. Nach dem Versand ein Jahr lang stabil

Lagerungspuffer:

PBS mit 0.02% Natriumazid und 50% Glycerin pH 7.3.

Aliquotieren ist nicht notwendig bei -20°C Lagerung

*** 20ul-Größen enthalten 0.1% BSA

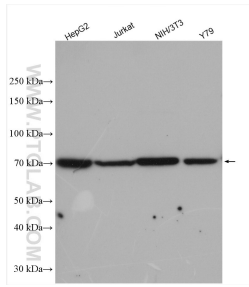
For technical support and original validation data for this product please contact:

T: 1 (888) 4PTGLAB (1-888-478-4522) (toll free
in USA), or 1(312) 455-8498 (outside USA)

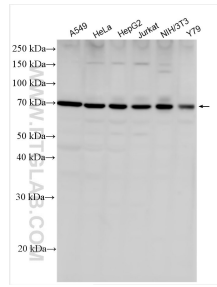
E: proteintech@ptglab.com
W: ptglab.com

This product is exclusively available under Proteintech Group brand and is not available to purchase from any other manufacturer.

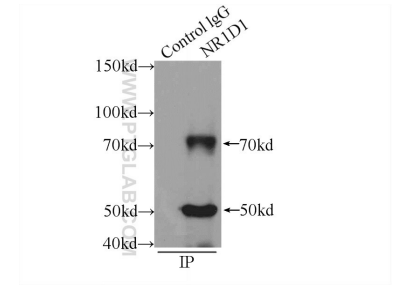
Ausgewählte Validierungsdaten



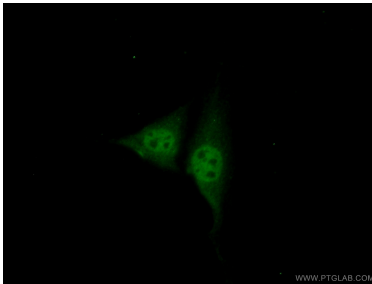
Various lysates were subjected to SDS PAGE followed by western blot with 14506-1-AP (NR1D1 antibody) at dilution of 1:3000 incubated at room temperature for 1.5 hours.



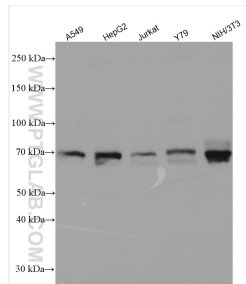
Various lysates were subjected to SDS PAGE followed by western blot with 14506-1-AP (NR1D1 antibody) at dilution of 1:2000 incubated at room temperature for 1.5 hours.



IP Result of anti-NR1D1 (IP:14506-1-AP, 4ug; Detection:14506-1-AP 1:300) with A549 cells lysate 1200ug.



Immunofluorescent analysis of (10% Formaldehyde) fixed NIH/3T3 cells using 14506-1-AP (NR1D1 antibody) at dilution of 1:50 and Alexa Fluor 488-conjugated AffiniPure Goat Anti-Rabbit IgG(H+L).



Various lysates were subjected to SDS PAGE followed by western blot with 14506-1-AP (NR1D1 antibody) at dilution of 1:2000 incubated at room temperature for 1.5 hours.