

Nur für Forschungszwecke

Synaptotagmin-1 Polyklonaler Antikörper



Katalog-Nr.: 14511-1-AP

Vorgestelltes Produkt

9 Publikationen

Allgemeine Informationen

Katalog-Nr.: 14511-1-AP

Größe:

150ul, Konzentration: 550 µg/ml von Nanodrop und 267 µg/ml durch die Bradford-Methode mit BSA als Standard;

Wirt:

Kaninchen

Isotyp:

IgG

Immunogen Katalognummer: AG5970

GenBank-Zugangsnummer:

BC058917

GeneID (NCBI):

6857

Vollständiger Name:

synaptotagmin I

Berechnete Masse:

48 kDa

Beobachtete Masse:

65 kDa, 47 kDa

Reinigungsmethode:

Antigen-Affinitätsreinigung

Empfohlene Verdünnungen:

WB 1:500-1:1000

IP 0.5-4.0 µg für IP und 1:500-1:1000 für WB

IHC 1:20-1:200

IF 1:50-1:500

Anwendungen

Geprüfte Anwendungen:

IF, IHC, IP, WB, ELISA

In Publikationen genannte Anwendungen:

IF, IHC, WB

Getestete Reaktivität:

Human, Maus

Zitierte Arten:

Human, Maus, Ratte

Hinweis-IHC: Antigendemaskierung mit TE-Puffer pH 9,0 empfohlen. (*) Wahlweise kann die Antigendemaskierung auch mit Citratpuffer pH 6,0 erfolgen.

Positivkontrollen:

WB: humanes Lebergewebe, HCT 116-Zellen, Maushodengewebe, Y79-Zellen

IP: Maushodengewebe, HCT 116-Zellen

IHC: humanes Leberkarzinomgewebe,

IF: HepG2-Zellen, HCT 116-Zellen

Hintergrundinformationen

The synaptotagmins are integral membrane proteins of synaptic vesicles thought to serve as Ca²⁺ sensors in the process of vesicular trafficking and exocytosis (PMID: 8058779). SYT1 (synaptotagmin I) was firstly identified as a 65-kDa protein with a wide distribution in neuronal and neurosecretory tissue (PMID: 7298720). Calcium binding to SYT1 participates in triggering neurotransmitter release at the synapse (PMID: 11242035). In addition to regulating exocytosis, SYT1 has also been implicated in endocytosis and neurite outgrowth (PMID: 15492212; 11078930; 10336114). This antibody recognizes endogenous SYT1, which has an experimentally determined molecular mass of 65-68 kDa. An additional band of 47 kDa could also be detected, which is corresponding to the calculated molecular weight of SYT1.

Bemerkenswerte Veröffentlichungen

Verfasser	Pubmed ID	Journal	Anwendung
Jingyun Liu	36558932	Pharmaceuticals (Basel)	IHC, IF
Hao-Long Zeng	29174846	Biochim Biophys Acta	WB
Hao-Long Zeng	24998433	J Proteomics	WB

Lagerung

Lagerungsbedingungen:

Bei -20°C lagern. Nach dem Versand ein Jahr lang stabil

Lagerungspuffer:

PBS mit 0.02% Natriumazid und 50% Glycerin pH 7.3.

Aliquotieren ist nicht notwendig bei -20°C Lagerung

*** 20ul-Größen enthalten 0.1% BSA

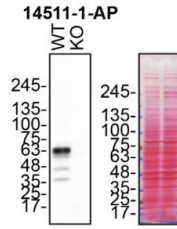
For technical support and original validation data for this product please contact:

T: 1 (888) 4PTGLAB (1-888-478-4522) (toll free in USA), or 1(312) 455-8498 (outside USA)

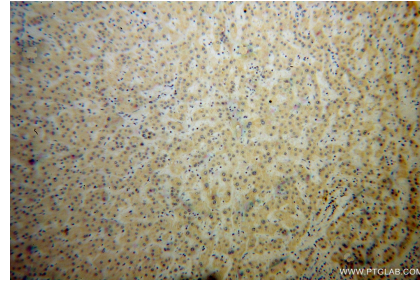
E: proteintech@ptglab.com
W: ptglab.com

This product is exclusively available under Proteintech Group brand and is not available to purchase from any other manufacturer.

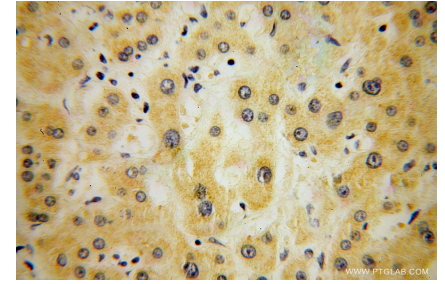
Ausgewählte Validierungsdaten



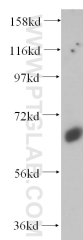
HCT 116 (WT and SYT1 KO) lysates prepared with RIPA buffer, 50 µg protein loaded. 14511-1-AP incubated at 1:500 at 4°C overnight in 5% BSA in TBST. Ponceau stained transfers shown on right. Data provided by YCharOS, an open science company with a mission to validate commercial antibodies to improve scientific reproducibility and transparency.



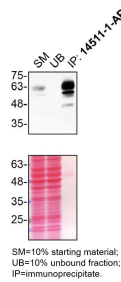
Immunohistochemical analysis of paraffin-embedded human liver cancer using 14511-1-AP (Synaptotagmin-1 antibody) at dilution of 1:100 (under 10x lens).



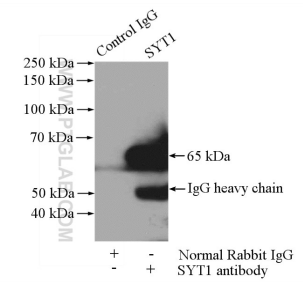
Immunohistochemical analysis of paraffin-embedded human liver cancer using 14511-1-AP (Synaptotagmin-1 antibody) at dilution of 1:100 (under 40x lens).



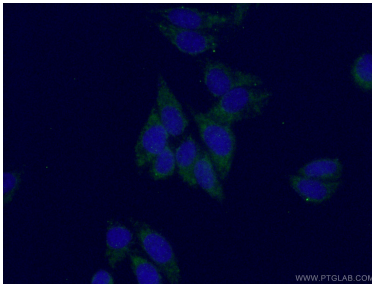
human liver tissue were subjected to SDS PAGE followed by western blot with 14511-1-AP (Synaptotagmin-1 antibody) at dilution of 1:1000 incubated at room temperature for 1.5 hours.



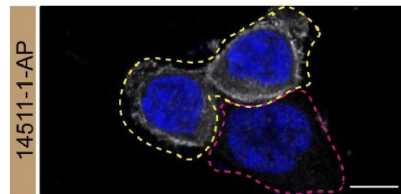
HCT 116 lysates prepared and IP of SYT1 performed using 1.0 µg of 14511-1-AP coupled to protein A-Sepharose beads. Data provided by YCharOS, an open science company with a mission to validate commercial antibodies to improve scientific reproducibility and transparency.



IP Result of anti-Synaptotagmin-1 (IP:14511-1-AP, 4µg; Detection:14511-1-AP 1:500) with mouse testis tissue lysate 4000µg.



Immunofluorescent analysis of (-20°C Ethanol) fixed HepG2 cells using 14511-1-AP (Synaptotagmin-1 antibody) at dilution of 1:50 and Alexa Fluor 488-conjugated AffiniPure Goat Anti-Rabbit IgG(H+L).



HCT 116 WT cells (yellow outline) and SYT1 KO cells (red outline) labelled with a green or a far red fluorescence dye, respectively. Cells fixed with 4% PFA and stained with 14511-1-AP at 1:500 plus DAPI. Bars = 10 µm. Data provided by YCharOS, an open science company with a mission to validate commercial antibodies to improve scientific reproducibility and transparency.