

## Allgemeine Informationen

## Katalog-Nr.:

14533-1-AP

## Größe:

150ul , Konzentration: 300 µg/ml von  
 Nanodrop und 200 µg/ml durch die  
 Bradford-Methode mit BSA als  
 Standard;

## Wirt:

Kaninchen

## Isotyp:

IgG

## Immunogen Katalognummer:

AG6033

## GenBank-Zugangsnummer:

BC050688

## GeneID (NCBI):

3921

## Vollständiger Name:

ribosomal protein SA

## Berechnete Masse:

33 kDa

## Beobachtete Masse:

40 kDa

## Reinigungsmethode:

Antigen-Affinitätsreinigung

## Empfohlene Verdünnungen:

WB 1:1000-1:4000

IF 1:20-1:200

## Anwendungen

## Geprüfte Anwendungen:

FC, IF, WB, ELISA

## In Publikationen genannte Anwendungen:

IF, IHC, WB

## Getestete Reaktivität:

Human, Maus, Ratte

## Zitierte Arten:

Hausschwein, Human, Maus

## Positivkontrollen:

WB : COLO 320-Zellen, HeLa-Zellen, Maus-  
 Kolangewebe, Mausebergewebe, NIH/3T3-Zellen, PC-  
 12-Zellen

IF : HepG2-Zellen,

## Hintergrundinformationen

The ribosomal protein SA (RPSA), previously named 67 kD laminin receptor(67LR), 37 kD laminin receptor precursor (37LRP) and p40 ribosome-associated protein, is a multifunctional protein, that plays a role in a number of pathological processes, such as cancer and prion diseases. It is overexpressed in various cancer cell lines, and the level of the laminin receptor transcript is higher in colon carcinoma tissue and lung cancer cell line than their normal counterparts. This antibody is a rabbit polyclonal antibody raised against full length RPSA of human origin. This antibody is specific to RPSA (LAMR1).67LR derives from homo- or hetero- dimerization of a 37 kDa cytosolic precursor (37LRP)), most probably by fatty acid acylation. 37LRP is mostly found in the cytosol and nucleus [10] where it is involved in translational processes and maintenance of nuclear structures, respectively. 67LR is localized at the cell surface and it not only serves as a receptor for LM but also acts as a receptor for elastin, carbohydrates and the cellular prion protein.

## Bemerkenswerte Veröffentlichungen

Verfasser	Pubmed ID	Journal	Anwendung
Turlo Kirsten A KA	23887637	Arterioscler Thromb Vasc Biol	WB
Lingli Sun	35302141	Food Funct	WB,IHC
Roberta Cagnetta	30008298	Neuron	IF

## Lagerung

## Lagerungsbedingungen:

Bei -20°C lagern. Nach dem Versand ein Jahr lang stabil

## Lagerungspuffer:

PBS mit 0.02% Natriumazid und 50% Glycerin pH 7.3.

Aliquotieren ist nicht notwendig bei -20°C Lagerung

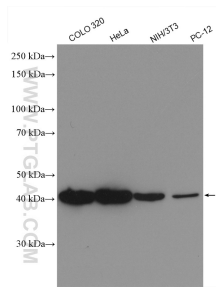
\*\*\* 20ul-Größen enthalten 0.1% BSA

For technical support and original validation data for this product please contact:

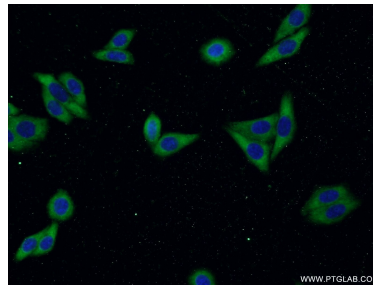
T: 1 (888) 4PTGLAB (1-888-478-4522) (toll free  
in USA), or 1(312) 455-8498 (outside USA)E: [proteintech@ptglab.com](mailto:proteintech@ptglab.com)  
W: [ptglab.com](http://ptglab.com)

This product is exclusively available under Proteintech  
 Group brand and is not available to purchase from any  
 other manufacturer.

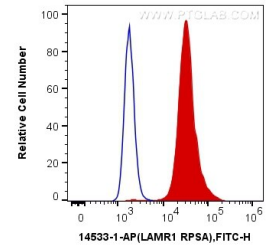
## Ausgewählte Validierungsdaten



Various lysates were subjected to SDS PAGE followed by western blot with 14533-1-AP (LAMR1,RP5A antibody) at dilution of 1:2000 incubated at room temperature for 1.5 hours.



Immunofluorescent analysis of HepG2 cells using 14533-1-AP (LAMR1,RP5A antibody) at dilution of 1:50 and Alexa Fluor 488-conjugated AffiniPure Goat Anti-Rabbit IgG(H+L).



1X10<sup>6</sup> HeLa cells were intracellularly stained with 0.2 ug Anti-Human LAMR1,RP5A (14533-1-AP) and CoraLite@488-Conjugated AffiniPure Goat Anti-Rabbit IgG(H+L) at dilution 1:1000 (red), or 0.2 ug Control Antibody. Cells were fixed with 4% PFA and permeabilized with Flow Cytometry Perm Buffer (PF00011-C).