

Nur für Forschungszwecke

# AFP Polyklonaler Antikörper

Katalog-Nr.:14550-1-AP

89 Publikationen



## Allgemeine Informationen

Katalog-Nr.:

14550-1-AP

Größe:

150ul, Konzentration: 650 µg/ml von Nanodrop;

Wirt:

Kaninchen

Isotyp:

IgG

Immunogen Katalognummer:

AG6089

GenBank-Zugangsnummer:

BC027881

GeneID (NCBI):

174

Vollständiger Name:

alpha-fetoprotein

Berechnete Masse:

69 kDa

Beobachtete Masse:

68-72 kDa

Reinigungsmethode:

Antigen-Affinitätsreinigung

Empfohlene Verdünnungen:

WB 1:2000-1:10000

IP 0.5-4.0 µg für IP und 1:500-1:2000 für WB

IHC 1:20-1:200

IF 1:50-1:500

## Anwendungen

Geprüfte Anwendungen:

IF, IHC, IP, WB, ELISA

In Publikationen genannte Anwendungen:

CoIP, FC, IF, IHC, WB

Getestete Reaktivität:

Human, Maus, Ratte

Zitierte Arten:

Human, Maus, Ratte

Positivkontrollen:

WB: BxPC-3-Zellen, HuH-7-Zellen, humanes Plazenta-Gewebe, L02-Zellen

IP: HepG2-Zellen,

IHC: humanes Leberkarzinomgewebe, humanes Ovarialkarzinomgewebe

IF: MCF-7-Zellen,

**Hinweis-IHC: Antigenmaskierung mit TE-Puffer pH 9,0 empfohlen. (\*) Wahlweise kann die Antigenmaskierung auch mit Citratpuffer pH 6,0 erfolgen.**

## Hintergrundinformationen

AFP, also known as Alpha-fetoprotein, is a major plasma protein in the fetus and its concentration is very low in the adult (PubMed:24120489). AFP is considered a marker of hepatocyte precursors. AFP can be detected at abnormally high concentrations in hepatocellular carcinomas as well as in the plasma and ascitic fluid of adults with hepatoma. High AFP concentrations have been correlated with tumor cell growth, indicating that AFP can serve as a tumor marker (PubMed: 18669658).

## Bemerkenswerte Veröffentlichungen

Verfasser	Pubmed ID	Journal	Anwendung
Jian Sun	27714143	Nanoscale	
Shaling Li	36169092	Cancer Sci	IF
Masahiro Yamamoto	28964793	Am J Pathol	IHC

## Lagerung

Lagerungsbedingungen:

Bei -20°C lagern. Nach dem Versand ein Jahr lang stabil

Lagerungspuffer:

PBS mit 0.02% Natriumazid und 50% Glycerin pH 7.3.

Aliquotieren ist nicht notwendig bei -20°C Lagerung

\*\*\* 20ul-Größen enthalten 0.1% BSA

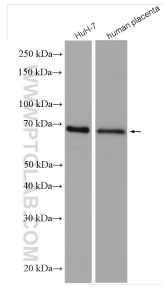
For technical support and original validation data for this product please contact:

T: 1 (888) 4PTGLAB (1-888-478-4522) (toll free in USA), or 1(312) 455-8498 (outside USA)

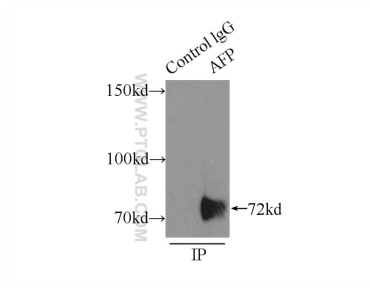
E: proteintech@ptglab.com  
W: ptglab.com

This product is exclusively available under Proteintech Group brand and is not available to purchase from any other manufacturer.

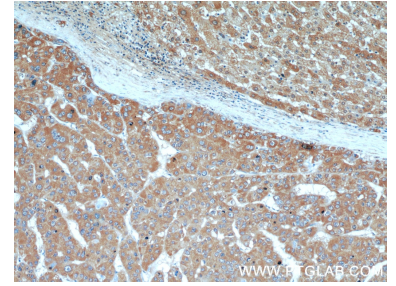
## Ausgewählte Validierungsdaten



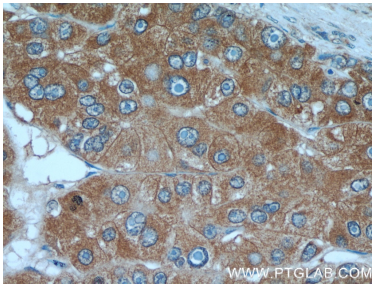
Various lysates were subjected to SDS PAGE followed by western blot with 14550-1-AP (AFP antibody) at dilution of 1:1500 incubated at room temperature for 1.5 hours.



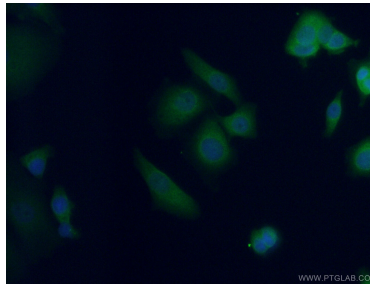
IP Result of anti-AFP (IP:14550-1-AP, 5ug; Detection:14550-1-AP 1:1000) with HepG2 cells lysate 6000ug.



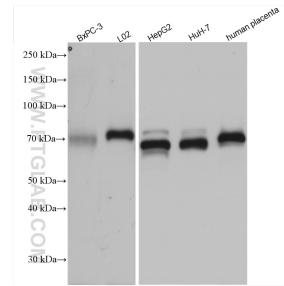
Immunohistochemical analysis of paraffin-embedded human liver cancer using 14550-1-AP (AFP antibody) at dilution of 1:50 (under 10x lens).



Immunohistochemical analysis of paraffin-embedded human liver cancer using 14550-1-AP (AFP antibody) at dilution of 1:50 (under 40x lens).



Immunofluorescent analysis of (4% PFA) fixed MCF-7 cells using 14550-1-AP (AFP antibody) at dilution of 1:50 and Alexa Fluor 488-Conjugated AffiniPure Goat Anti-Rabbit IgG(H+L).



BxPC-3 cells were subjected to SDS PAGE followed by western blot with 14550-1-AP (AFP antibody) at dilution of 1:5000 incubated at room temperature for 1.5 hours.