

Nur für Forschungszwecke

TMEM27 Polyklonaler Antikörper

Katalog-Nr.:14571-1-AP



Allgemeine Informationen

Katalog-Nr.:
14571-1-AP

Größe:

150ul , Konzentration: 200 µg/ml von
Nanodrop und 133 µg/ml durch die
Bradford-Methode mit BSA als
Standard;

Wirt:

Kaninchen

Isotyp:

IgG

Immunogen Katalognummer:

AG6187

GenBank-Zugangsnummer:

BC050606

GeneID (NCBI):

57393

Vollständiger Name:

transmembrane protein 27

Berechnete Masse:

25 kDa

Beobachtete Masse:

20 kDa

Reinigungsmethode:

Antigen-Affinitätsreinigung

Empfohlene Verdünnungen:

WB 1:500-1:2000

Anwendungen

Geprüfte Anwendungen:

WB, ELISA

Getestete Reaktivität:

Human, Maus, Ratte

Positivkontrollen:

WB : Maus-Pankreasgewebe, humanes Milzgewebe,
Mausnierengewebe, MCF-7-Zellen

Hintergrundinformationen

TMEM27 (also termed collectrin), a 46 kDa type I transmembrane protein, is a homolog of the noncatalytic domain of angiotensin-converting enzyme-related carboxypeptidase (Ace2). Its expression has only been reported in the brush border membrane of the proximal tubules and collecting ducts of the kidney and in the pancreatic b cell (PMID: 11278314, 16330324). Overexpression of TMEM27 in b cells leads to increased proliferation in vitro and increased pancreatic b cell mass in vivo, and also has been reported to augment glucocorticoid-stimulated INS secretion (GSIS) (PMID: 16330324, 16330323). The abundance of TMEM27 protein in b cells is furthermore regulated by ectodomain cleavage, which leads to two cleavage products, a 25 kDa N-terminal part that is released into the extracellular space (the shed fragment), and a 22 kDa C-terminal fragment (CTF) remaining in the membrane that is rapidly degraded (PMID: 16330324). TMEM27 is an N-glycosylated protein and can form dimers with MW of 64-75 kDa (patent US 20100119489 A1). TMEM27 can be used as a beta cell mass biomarker (PMID: 20386877, 21907142).

Lagerung

Lagerungsbedingungen:

Bei -20°C lagern. Nach dem Versand ein Jahr lang stabil

Lagerungspuffer:

PBS mit 0.02% Natriumazid und 50% Glycerin pH 7.3.

Aliquotieren ist nicht notwendig bei -20°C Lagerung

*** 20ul-Größen enthalten 0.1% BSA

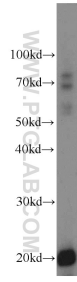
For technical support and original validation data for this product please contact:

T: 1 (888) 4PTGLAB (1-888-478-4522) (toll free
in USA), or 1(312) 455-8498 (outside USA)

E: proteintech@ptglab.com
W: ptglab.com

This product is exclusively available under Proteintech Group brand and is not available to purchase from any other manufacturer.

Ausgewählte Validierungsdaten



mouse pancreas tissue were subjected to SDS PAGE followed by western blot with 14571-1-AP (TMEM27 antibody) at dilution of 1:500 incubated at room temperature for 1.5 hours.