

## Allgemeine Informationen

<b>Katalog-Nr.:</b> 14592-1-AP	<b>GenBank-Zugangsnummer:</b> BC035279	<b>Reinigungsmethode:</b> Antigen-Affinitätsreinigung
<b>Größe:</b> 150ul , Konzentration: 800 µg/ml von Nanodrop und 500 µg/ml durch die Bradford-Methode mit BSA als Standard;	<b>GeneID (NCBI):</b> 90459	<b>Empfohlene Verdünnungen:</b> WB 1:500-1:2000 IHC 1:50-1:500 IF 1:10-1:100
<b>Wirt:</b> Kaninchen	<b>Vollständiger Name:</b> exoribonuclease 1	
<b>Isotyp:</b> IgG	<b>Berechnete Masse:</b> 40 kDa	
<b>Immunogen Katalognummer:</b> AG6125	<b>Beobachtete Masse:</b> 46 kDa	

## Anwendungen

<b>Geprüfte Anwendungen:</b> IF, IHC, WB,ELISA	<b>Positivkontrollen:</b>
<b>Getestete Reaktivität:</b> Human, Maus, Ratte	<b>WB :</b> K-562-Zellen, HepG2-Zellen, HL-60-Zellen
<b>Hinweis-IHC: Antigenmaskierung mit TE-Puffer pH 9,0 empfohlen. (*) Wahlweise kann die Antigenmaskierung auch mit Citratpuffer pH 6,0 erfolgen.</b>	<b>IHC :</b> humanes Leberkarzinomgewebe, humanes Hodengewebe
	<b>IF :</b> HepG2-Zellen,

## Hintergrundinformationen

ERI1, also named as HEXO, 3'HEXO and THEX1, contains one exonuclease domain and one SAP domain. The SAP domain is necessary for binding to the stem-loop structure of histone mRNAs and to form the ternary complex with SLBP, but not for 3'-end histone mRNA exonuclease activity. It is a RNA exonuclease that binds to the 3'-end of histone mRNAs and degrades them, suggesting that it plays an essential role in histone mRNA decay after replication. It is able to bind other mRNAs. ERI1 is required for 5.8S rRNA 3'-end processing. It also binds to 5.8s ribosomal RNA. ERI1 binds with high affinity to the stem-loop structure of replication-dependent histone pre-mRNAs.

## Lagerung

**Lagerungsbedingungen:**  
Bei -20°C lagern. Nach dem Versand ein Jahr lang stabil

**Lagerungspuffer:**  
PBS mit 0.02% Natriumazid und 50% Glycerin pH 7.3.

**Aliquotieren ist nicht notwendig bei -20°C Lagerung**

**\*\*\* 20ul-Größen enthalten 0.1% BSA**

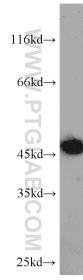
For technical support and original validation data for this product please contact:

T: 1 (888) 4PTGLAB (1-888-478-4522) (toll free  
in USA), or 1(312) 455-8498 (outside USA)

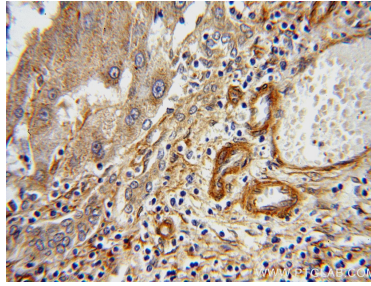
E: [proteintech@ptglab.com](mailto:proteintech@ptglab.com)  
W: [ptglab.com](http://ptglab.com)

**This product is exclusively available under Proteintech Group brand and is not available to purchase from any other manufacturer.**

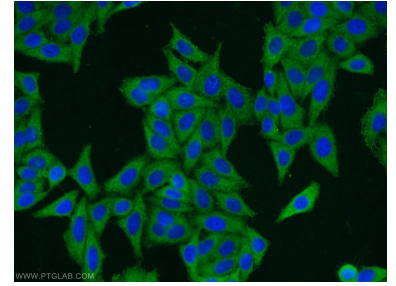
## Ausgewählte Validierungsdaten



K-562 cells were subjected to SDS PAGE followed by western blot with 14592-1-AP (ER1 antibody) at dilution of 1:1000 incubated at room temperature for 1.5 hours.



Immunohistochemical analysis of paraffin-embedded human liver cancer using 14592-1-AP (ER1 antibody) at dilution of 1:100 (under 40x lens).



Immunofluorescent analysis of HepG2 cells using 14592-1-AP (ER1 antibody) at dilution of 1:25 and Alexa Fluor 488-conjugated AffiniPure Goat Anti-Rabbit IgG(H+L).