

Allgemeine Informationen

Katalog-Nr.:

14600-1-AP

Größe:

150ul , Konzentration: 500 µg/ml von Nanodrop;

Wirt:

Kaninchen

Isotyp:

IgG

Immunogen Katalognummer:

AG6144

GenBank-Zugangsnummer:

BC067797

GeneID (NCBI):

81631

Vollständiger Name:

microtubule-associated protein 1 light chain 3 beta

Berechnete Masse:

15 kDa

Beobachtete Masse:

14-18 kDa

Reinigungsmethode:

Antigen-Affinitätsreinigung

Empfohlene Verdünnungen:

WB 1:1000-1:5000

IP 0.5-4.0 µg für IP und 1:500-1:2000 für WB

IHC 1:50-1:500

IF 1:250-1:1000

Anwendungen

Geprüfte Anwendungen:

FC, IF, IHC, IP, WB, ELISA

In Publikationen genannte Anwendungen:

CoIP, IF, IHC, IP, WB

Getestete Reaktivität:

Human, Maus, Ratte

Zitierte Arten:

Affe, Ente, Hausschwein, Huhn, Human, Kaninchen, Maus, Ratte, Rind, Ziege

Hinweis-IHC: Antigenmaskierung mit TE-Puffer pH 9,0 empfohlen. (*) Wahlweise kann die Antigenmaskierung auch mit Citratpuffer pH 6,0 erfolgen.

Positivkontrollen:

WB : mit Chloroquin behandelte HepG2-Zellen, HeLa-Zellen, humanes Skelettmuskelgewebe, Mausherzgewebe, Maushirngewebe, Maushodengewebe, Mauslebergewebe, Mauslungengewebe, mit Chloroquin behandelte HEK-293-Zellen, NIH/3T3-Zellen, Rattenhirngewebe

IP : Maushirngewebe,

IHC : humanes Lebergewebe, humanes Gliomgewebe, humanes Hodengewebe, humanes Mammakarzinomgewebe, Maushirngewebe

IF : mit Chloroquin behandelte HeLa-Zellen, mit Chloroquin behandelte HepG2-Zellen, mit Chloroquin behandelte U2OS-Zellen

Hintergrundinformationen

Map1LC3, also known as LC3, is the human homolog of yeast Atg8 and is involved in the formation of autophagosomal vacuoles, called autophagosomes. Three human Map1LC3 isoforms, MAP1LC3A, MAP1LC3B, and MAP1LC3C, undergo post-translational modifications during autophagy. And they differ in their post-translation modifications during autophagy. Map1LC3 also exists in two modified forms, an 18 kDa cytoplasmic form that was originally identified as a subunit of the microtubule-associated protein 1, and a 14-16 kDa form that is associated with the autophagosome membrane. This antibody can cross react with MAP1LC3A, MAP1LC3B, and MAP1LC3C.

Bemerkenswerte Veröffentlichungen

Verfasser	Pubmed ID	Journal	Anwendung
Huanshan He	36183753	Int J Biol Macromol	WB
Xin Xu	36178722	Environ Toxicol	WB,IF
Zeen Zhu	36248959	Front Oncol	WB,IF,IHC

Lagerung

Lagerungsbedingungen:

Bei -20°C lagern. Nach dem Versand ein Jahr lang stabil

Lagerungspuffer:

PBS mit 0.02% Natriumazid und 50% Glycerin pH 7.3.

Aliquotieren ist nicht notwendig bei -20°C Lagerung

*** 20ul-Größen enthalten 0.1% BSA

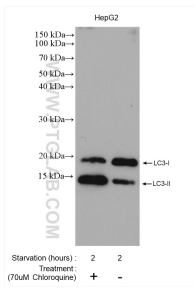
For technical support and original validation data for this product please contact:

T: 1 (888) 4PTGLAB (1-888-478-4522) (toll free in USA), or 1(312) 455-8498 (outside USA)

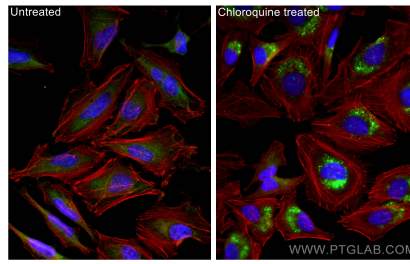
E: proteintech@ptglab.com
W: ptglab.com

This product is exclusively available under Proteintech Group brand and is not available to purchase from any other manufacturer.

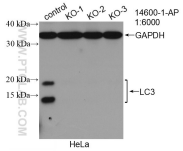
Ausgewählte Validierungsdaten



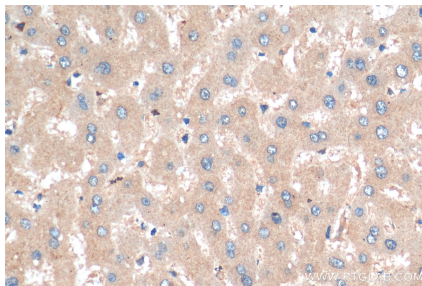
Chloroquine treated HepG2 cells (left) and untreated HepG2 cells (right) after serum deprived for 2 hours were subjected to SDS PAGE followed by western blot with 14600-1-AP (LC3 antibody) at dilution of 1:2500 incubated at room temperature for 1.5 hours.



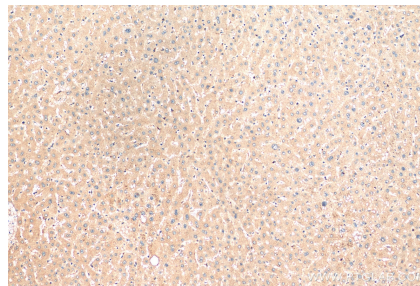
Immunofluorescent analysis of (-20°C Ethanol) fixed Chloroquine treated HeLa cells using LC3 antibody (14600-1-AP) at dilution of 1:500 and CoraLite® 488-Conjugated AffiniPure Goat Anti-Rabbit IgG(H+L).



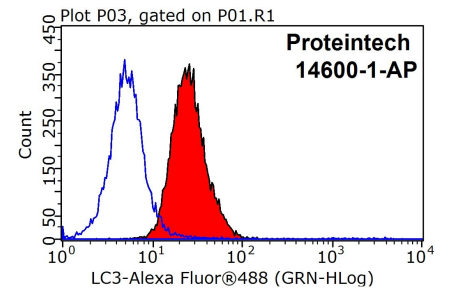
WB result of LC3 antibody (14600-1-AP; 1:6000; room temperature for 1.5 hours) with negative Control and LC3 knockout HeLa cells.



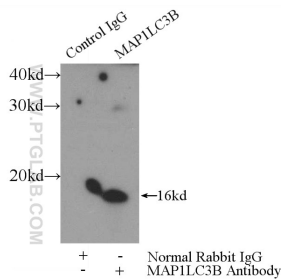
Immunohistochemical analysis of paraffin-embedded human liver tissue slide using 14600-1-AP (LC3 antibody) at dilution of 1:200 (under 10x lens). Heat mediated antigen retrieval with Tris-EDTA buffer (pH 9.0).



Immunohistochemical analysis of paraffin-embedded human liver tissue slide using 14600-1-AP (LC3 antibody) at dilution of 1:200 (under 40x lens). Heat mediated antigen retrieval with Tris-EDTA buffer (pH 9.0).



1X10⁶ HeLa cells were stained with 0.2ug LC3 antibody (14600-1-AP, red) and control antibody (blue). Fixed with 90% MeOH blocked with 3% BSA (30 min). Alexa Fluor 488-conjugated AffiniPure Goat Anti-Rabbit IgG(H+L) with dilution 1:1000.



IP Result of anti-LC3 (IP:14600-1-AP, 3ug; Detection:14600-1-AP 1:1000) with mouse brain tissue lysate 4000ug.