

Nur für Forschungszwecke

SMPD1,ASM Polyklonaler Antikörper



Katalog-Nr.:14609-1-AP

Vorgestelltes Produkt

11 Publikationen

Allgemeine Informationen

Katalog-Nr.: 14609-1-AP	GenBank-Zugangsnummer: BC041164	Reinigungsmethode: Antigen-Affinitätsreinigung
Größe: 150ul , Konzentration: 500 µg/ml von Nanodrop;	GeneID (NCBI): 6609	Empfohlene Verdünnungen: WB 1:500-1:1000 IHC 1:100-1:400
Wirt: Kaninchen	Vollständiger Name: sphingomyelin phosphodiesterase 1, acid lysosomal	
Isotyp: IgG	Berechnete Masse: 70 kDa	
Immunogen Katalognummer: AG6180	Beobachtete Masse: 60 kDa	

Anwendungen

Geprüfte Anwendungen:

IHC, WB, ELISA

In Publikationen genannte Anwendungen:

IF, IHC, WB

Getestete Reaktivität:

Human, Maus, Ratte

Zitierte Arten:

Human, Maus, Ratte

Hinweis-IHC: Antigenmaskierung mit TE-Puffer pH 9,0 empfohlen. (*) Wahlweise kann die Antigenmaskierung auch mit Citratpuffer pH 6,0 erfolgen.

Positivkontrollen:

WB : Maushirngewebe, Maus-Cerebellum-Gewebe, Rattenhirngewebe

IHC : humanes Hirngewebe, humanes Tonsillitisgewebe

Hintergrundinformationen

SMPD1(Sphingomyelin phosphodiesterase) is also named as ASM and belongs to the acid sphingomyelinase family. It is an important enzyme in sphingolipid metabolism and plays key roles in apoptosis, immunity, development, and cancer. The deficient activity of this enzyme results in Types A and B Niemann-Pick disease (NPD). This protein has 4 isoforms produced by alternative splicing. SMPD1 can produce a 60 kDa peptide with its signal peptide missing.

Bemerkenswerte Veröffentlichungen

Verfasser	Pubmed ID	Journal	Anwendung
Jonghae Lee	36077841	Cancers (Basel)	WB
Xin Tracy Liu	36333295	Oncogenesis	WB
Yi-Yu Qi	35391788	Drug Des Devel Ther	IF

Lagerung

Lagerungsbedingungen:

Bei -20°C lagern. Nach dem Versand ein Jahr lang stabil

Lagerungspuffer:

PBS mit 0.02% Natriumazid und 50% Glycerin pH 7.3.

Aliquotieren ist nicht notwendig bei -20°C Lagerung

*** 20ul-Größen enthalten 0.1% BSA

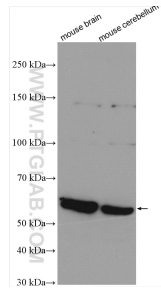
For technical support and original validation data for this product please contact:

T: 1 (888) 4PTGLAB (1-888-478-4522) (toll free in USA), or 1(312) 455-8498 (outside USA)

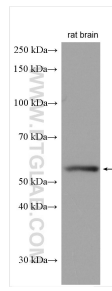
E: proteintech@ptglab.com
W: ptglab.com

This product is exclusively available under Proteintech Group brand and is not available to purchase from any other manufacturer.

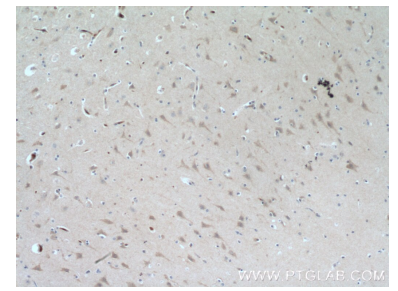
Ausgewählte Validierungsdaten



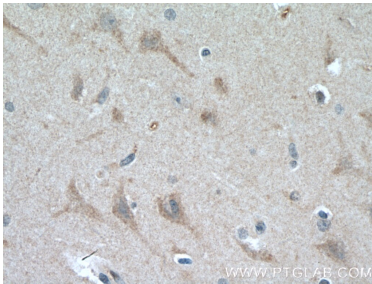
Various lysates were subjected to SDS PAGE followed by western blot with 14609-1-AP (SMPD1,ASM antibody) at dilution of 1:600 incubated at room temperature for 1.5 hours.



rat brain tissue were subjected to SDS PAGE followed by western blot with 14609-1-AP (SMPD1,ASM antibody) at dilution of 1:600 incubated at room temperature for 1.5 hours.



Immunohistochemical analysis of paraffin-embedded human brain tissue slide using 14609-1-AP (SMPD1,ASM Antibody) at dilution of 1:200 (under 10x lens). Heat mediated antigen retrieval with Tris-EDTA buffer (pH 9.0).



Immunohistochemical analysis of paraffin-embedded human brain tissue slide using 14609-1-AP (SMPD1,ASM Antibody) at dilution of 1:200 (under 40x lens). Heat mediated antigen retrieval with Tris-EDTA buffer (pH 9.0).