

Allgemeine Informationen

Katalog-Nr.:
14631-1-AP

Größe:
150ul , Konzentration: 300 µg/ml
durch die Bradford-Methode mit BSA
als Standard;

Wirt:
Kaninchen

Isotyp:
IgG

Immunogen Katalognummer:
AG6209

GenBank-Zugangsnummer:
BC065016

GeneID (NCBI):
10939

Vollständiger Name:
AFG3 ATPase family gene 3-like 2
(yeast)

Berechnete Masse:
88 kDa

Beobachtete Masse:
80-90 kDa

Reinigungsmethode:
Antigen-Affinitätsreinigung

Empfohlene Verdünnungen:
WB 1:2000-1:16000
IP 0.5-4.0 µg für IP und 1:500-1:2000
für WB
IHC 1:100-1:400
IF 1:10-1:100

Anwendungen

Geprüfte Anwendungen:
IF, IHC, IP, WB, ELISA

In Publikationen genannte Anwendungen:
IP, WB

Getestete Reaktivität:
Human, Maus, Ratte

Zitierte Arten:
Human, Maus, Zebrafisch

Hinweis-IHC: Antigenmaskierung mit TE-Puffer pH 9,0 empfohlen. (*) Wahlweise kann die Antigenmaskierung auch mit Citratpuffer pH 6,0 erfolgen.

Positivkontrollen:

WB : HeLa-Zellen, Jurkat-Zellen, Maushirngewebe, Mauslebergewebe, Mauseiere, Mauseiere, Mauseiere, Skelettmuskelgewebe, Rattenlebergewebe

IP : Mauseiere,

IHC : humanes Nierengewebe,

IF : HepG2-Zellen, HeLa-Zellen

Hintergrundinformationen

AFG3L2 is the catalytic subunit of the m-AAA protease, an ATP-dependent proteolytic complex of the mitochondrial inner membrane that degrades misfolded proteins and regulates ribosome assembly (PMID:17101804). Human AFG3L2 is an 80-kDa protein encoded by a 17-exon gene and highly and selectively expressed in human cerebellar Purkinje cells (PMID:20208537) and it can exist as a truncated 65 kDa protein (PMID:18337413). Defects in AFG3L2 are the cause of spinocerebellar ataxia type 28 (SCA28) and spastic ataxia autosomal recessive type 5 (SPAX5).

Bemerkenswerte Veröffentlichungen

Verfasser	Pubmed ID	Journal	Anwendung
Uwe Richter	26504172	J Cell Biol	WB
Kah Ying Ng	34718584	Hum Mol Genet	WB
Hao Liu	36245295	EMBO J	WB,IP

Lagerung

Lagerungsbedingungen:

Bei -20°C lagern. Nach dem Versand ein Jahr lang stabil

Lagerungspuffer:

PBS mit 0.02% Natriumazid und 50% Glycerin pH 7.3.

Aliquotieren ist nicht notwendig bei -20°C Lagerung

***** 20ul-Größen enthalten 0.1% BSA**

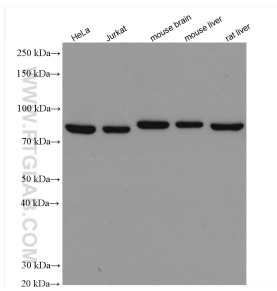
For technical support and original validation data for this product please contact:

T: 1 (888) 4PTGLAB (1-888-478-4522) (toll free in USA), or 1(312) 455-8498 (outside USA)

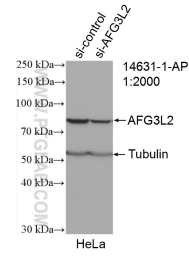
E: proteintech@ptglab.com
W: ptglab.com

This product is exclusively available under Proteintech Group brand and is not available to purchase from any other manufacturer.

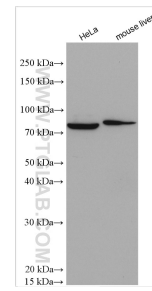
Ausgewählte Validierungsdaten



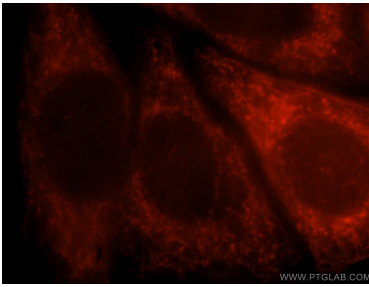
Various lysates were subjected to SDS PAGE followed by western blot with 14631-1-AP (AFG3L2 antibody) at dilution of 1:8000 incubated at room temperature for 1.5 hours.



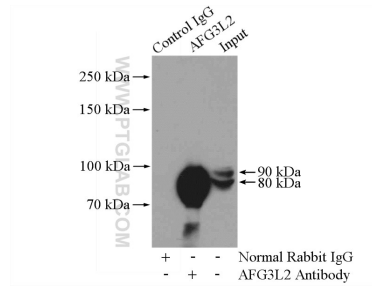
WB result of AFG3L2 antibody (14631-1-AP; 1:2000; incubated at room temperature for 1.5 hours) with sh-Control and sh-AFG3L2 transfected HeLa cells.



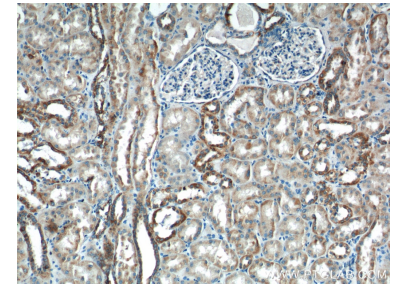
Various lysates were subjected to SDS PAGE followed by western blot with 14631-1-AP (AFG3L2 antibody) at dilution of 1:2000 incubated at room temperature for 1.5 hours.



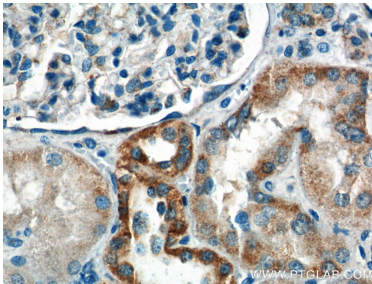
Immunofluorescent analysis of HepG2 cells, using AFG3L2 antibody 14631-1-AP at 1:25 dilution and Rhodamine-labeled goat anti-rabbit IgG (red).



IP Result of anti-AFG3L2 (IP:14631-1-AP, 4ug; Detection:14631-1-AP 1:1000) with mouse kidney tissue lysate 4000ug.



Immunohistochemical analysis of paraffin-embedded human kidney tissue slide using 14631-1-AP (AFG3L2 Antibody) at dilution of 1:200 (under 10x lens).



Immunohistochemical analysis of paraffin-embedded human kidney tissue slide using 14631-1-AP (AFG3L2 Antibody) at dilution of 1:200 (under 40x lens).