

Nur für Forschungszwecke

# PPP1R15B Polyklonaler Antikörper

Katalog-Nr.: 14634-1-AP

Vorgestelltes Produkt

17 Publikationen



## Allgemeine Informationen

<b>Katalog-Nr.:</b> 14634-1-AP	<b>GenBank-Zugangsnummer:</b> BC065280	<b>Reinigungsmethode:</b> Antigen-Affinitätsreinigung
<b>Größe:</b> 150ul, Konzentration: 600 µg/ml von Nanodrop;	<b>GeneID (NCBI):</b> 84919	<b>Empfohlene Verdünnungen:</b> WB 1:5000-1:50000 IP 0.5-4.0 µg für IP und 1:500-1:2000 für WB
<b>Wirt:</b> Kaninchen	<b>Vollständiger Name:</b> protein phosphatase 1, regulatory (inhibitor) subunit 15B	<b>IHC 1:200-1:800</b> <b>IF 1:20-1:200</b>
<b>Isotyp:</b> IgG	<b>Berechnete Masse:</b> 79 kDa	
<b>Immunogen Katalognummer:</b> AG6213	<b>Beobachtete Masse:</b> 100-110 kDa	

## Anwendungen

### Geprüfte Anwendungen:

IF, IHC, IP, WB, ELISA

### In Publikationen genannte Anwendungen:

CoIP, IF, IP, WB

### Getestete Reaktivität:

Human, Maus, Ratte

### Zitierte Arten:

Human, Maus

### Positivkontrollen:

**WB:** A2780-Zellen, HEK-293-Zellen, MCF-7-Zellen, MDA-MB-231-Zellen, SGC-7901-Zellen, SKOV-3-Zellen

**IP:** MCF-7-Zellen,

**IHC:** Maushirngewebe, Maus-Cerebellum-Gewebe

**IF:** HepG2-Zellen,

**Hinweis-IHC: Antigenmaskierung mit TE-Puffer pH 9,0 empfohlen. (\*) Wahlweise kann die Antigenmaskierung auch mit Citratpuffer pH 6,0 erfolgen.**

## Hintergrundinformationen

Protein phosphatase 1 regulatory subunit 15B (PPP1R15B) is a member of PPP1R15 family, it forms a complex with protein phosphatase 1 (PP1) and NCK1/2, maintaining low levels of EIF2S1 phosphorylation in unstressed cells, thus is also named constitutive repressor of eIF2alpha phosphorylation (CREP). PPP1R15B is associated in endoplasmic reticulum (ER) stress response resulting to a role in translation regulation. Knock-down of PPP1R15B strongly protected mammalian cells against oxidative stress, peroxynitrite stress, and more modestly against accumulation of misfolded proteins in the ER. Recently, PPP1R15B was found to associate with cell membranes and regulate membrane traffic in a PP1c-independent manner, suggesting a novel link between translation and traffic. MW of PPP1R15B is 80 kDa. Observed MW of PPP1R15B is from 100-110 kDa maybe due to phosphorylation (PMID: 28492545).

## Bemerkenswerte Veröffentlichungen

Verfasser	Pubmed ID	Journal	Anwendung
Rebecca R Miles	34597669	J Biol Chem	WB
Kyle Friend	26406898	PLoS One	WB
Kloft Nicole N	22915583	J Biol Chem	WB, CoIP

## Lagerung

### Lagerungsbedingungen:

Bei -20°C lagern. Nach dem Versand ein Jahr lang stabil

### Lagerungspuffer:

PBS mit 0.02% Natriumazid und 50% Glycerin pH 7.3.

Aliquotieren ist nicht notwendig bei -20°C Lagerung

\*\*\* 20ul-Größen enthalten 0.1% BSA

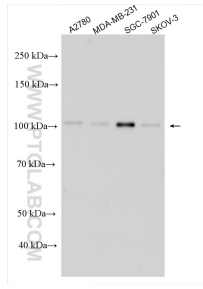
For technical support and original validation data for this product please contact:

T: 1 (888) 4PTGLAB (1-888-478-4522) (toll free in USA), or 1(312) 455-8498 (outside USA)

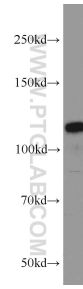
E: proteintech@ptglab.com  
W: ptglab.com

This product is exclusively available under Proteintech Group brand and is not available to purchase from any other manufacturer.

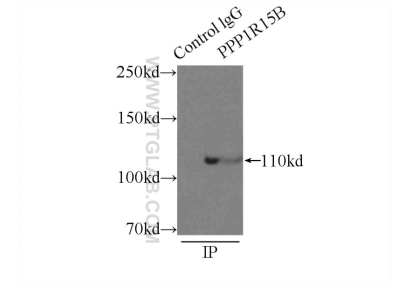
## Ausgewählte Validierungsdaten



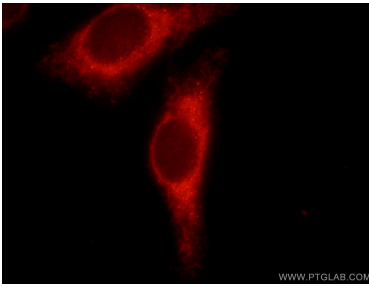
Various lysates were subjected to SDS PAGE followed by western blot with 14634-1-AP (PPP1R15B antibody) at dilution of 1:15000 incubated at room temperature for 1.5 hours.



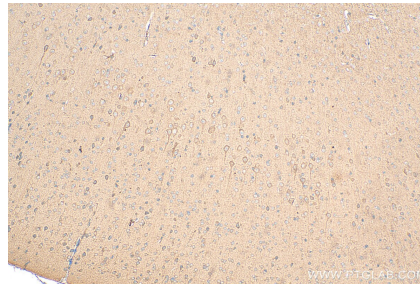
SGC-7901 cells were subjected to SDS PAGE followed by western blot with 14634-1-AP (PPP1R15B antibody) at dilution of 1:1000 incubated at room temperature for 1.5 hours.



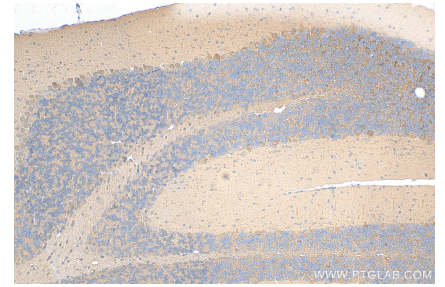
IP Result of anti-PPP1R15B;CReP (IP:14634-1-AP, 3ug; Detection:14634-1-AP 1:1000) with MCF-7 cells lysate 2500ug.



Immunofluorescent analysis of HepG2 cells using 14634-1-AP (PPP1R15B antibody) at dilution of 1:50 and Rhodamine-labeled goat anti-rabbit IgG .



Immunohistochemical analysis of paraffin-embedded mouse brain tissue slide using 14634-1-AP (PPP1R15B antibody) at dilution of 1:400 (under 10x lens). Heat mediated antigen retrieval with Tris-EDTA buffer (pH 9.0).



Immunohistochemical analysis of paraffin-embedded mouse cerebellum tissue slide using 14634-1-AP (PPP1R15B antibody) at dilution of 1:400 (under 10x lens). Heat mediated antigen retrieval with Tris-EDTA buffer (pH 9.0).