

Nur für Forschungszwecke

CNPY2, MSAP Polyklonaler Antikörper



Katalog-Nr.:14635-1-AP

Vorgestelltes Produkt

12 Publikationen

Allgemeine Informationen

Katalog-Nr.:
14635-1-AP

Größe:
150ul, Konzentration: 300 µg/ml von
Nanodrop und 153 µg/ml durch die
Bradford-Methode mit BSA als
Standard;

Wirt:
Kaninchen

Isotyp:
IgG

Immunogen Katalognummer:
AG6214

GenBank-Zugangsnummer:
BC065015

GeneID (NCBI):
10330

Vollständiger Name:
canopy 2 homolog (zebrafish)

Berechnete Masse:
21 kDa

Beobachtete Masse:
17-21 kDa

Reinigungsmethode:

Antigen-Affinitätsreinigung

Empfohlene Verdünnungen:

WB 1:1000-1:8000

IP 0.5-4.0 ug für IP und 1:500-1:1000

für WB

IHC 1:200-1:800

IF 1:20-1:200

Anwendungen

Geprüfte Anwendungen:

FC, IF, IHC, IP, WB, ELISA

In Publikationen genannte Anwendungen:

IF, IHC, WB

Getestete Reaktivität:

Human, Maus, Ratte

Zitierte Arten:

Human, Maus, Ratte

**Hinweis-IHC: Antigenmaskierung mit TE-
Puffer pH 9,0 empfohlen. (*) Wahlweise
kann die Antigenmaskierung auch mit
Citratpuffer pH 6,0 erfolgen.**

Positivkontrollen:

WB : HepG2-Zellen, humanes Lebergewebe,
Mauslebergewebe, Maus-Pankreasgewebe,
Rattenlebergewebe

IP : HepG2-Zellen,

IHC : humanes Lebergewebe, humanes
Pankreaskarzinomgewebe

IF : HepG2-Zellen,

Hintergrundinformationen

CNPY2, also named as MSAP, TMEM4 and ZSIG9, is a positive regulator of neurite outgrowth. It interacts with the ezrin-radixin-moesin (ERM)-like myosin regulatory light chain-interacting protein (MIR), and the two proteins are co-localized in cell lines and in primary neurons. CNPY2 can stabilize MRLC and thus bring about an increase in neurite outgrowth. (PMID: 12826659) This antibody is specific to CNPY2.

Bemerkenswerte Veröffentlichungen

Verfasser	Pubmed ID	Journal	Anwendung
Feng Hong	28869608	Nat Struct Mol Biol	WB
Lina Zhao	31625681	J Cell Mol Med	WB
Chun-Ling Guo	36422742	Apoptosis	WB,IF

Lagerung

Lagerungsbedingungen:

Bei -20°C lagern. Nach dem Versand ein Jahr lang stabil

Lagerungspuffer:

PBS mit 0.02% Natriumazid und 50% Glycerin pH 7.3.

Aliquotieren ist nicht notwendig bei -20°C Lagerung

*** 20ul-Größen enthalten 0.1% BSA

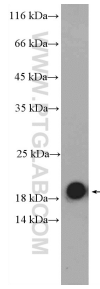
For technical support and original validation data for this product please contact:

T: 1 (888) 4PTGLAB (1-888-478-4522) (toll free
in USA), or 1(312) 455-8498 (outside USA)

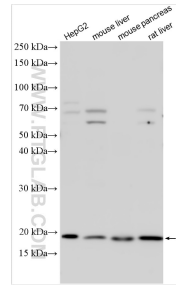
E: proteintech@ptglab.com
W: ptglab.com

This product is exclusively available under Proteintech
Group brand and is not available to purchase from any
other manufacturer.

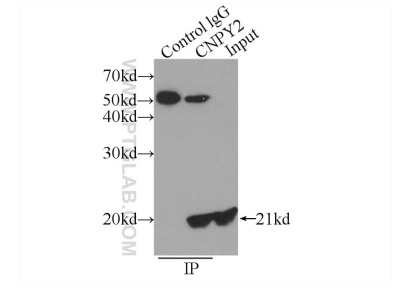
Ausgewählte Validierungsdaten



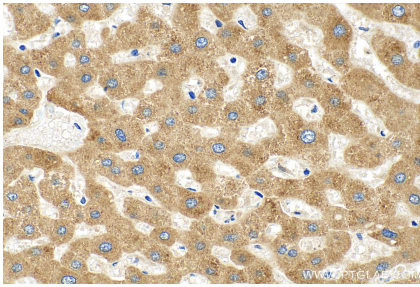
mouse pancreas tissue were subjected to SDS PAGE followed by western blot with 14635-1-AP (CNPY2,MSAP antibody) at dilution of 1:300 incubated at room temperature for 1.5 hours.



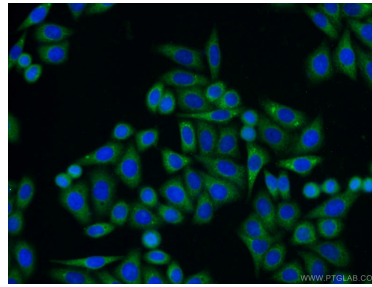
Various lysates were subjected to SDS PAGE followed by western blot with 14635-1-AP (CNPY2, MSAP antibody) at dilution of 1:4000 incubated at room temperature for 1.5 hours.



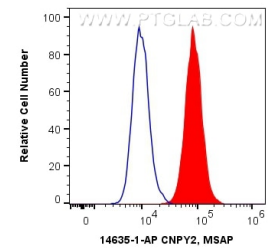
IP Result of anti-CNPY2,MSAP (IP:14635-1-AP, 3ug; Detection:14635-1-AP 1:500) with HepG2 cells lysate 600ug.



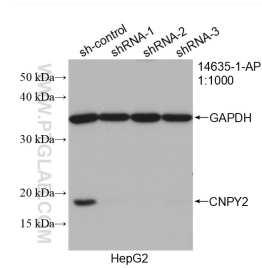
Immunohistochemical analysis of paraffin-embedded human liver tissue slide using 14635-1-AP (CNPY2, MSAP antibody) at dilution of 1:400 (under 40x lens). Heat mediated antigen retrieval with Sodium Citrate buffer (pH 6.0).



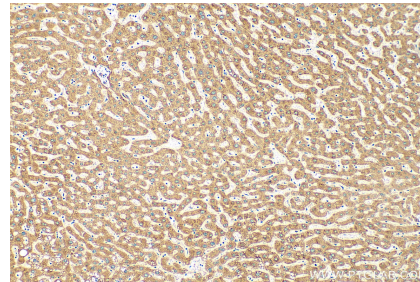
Immunofluorescent analysis of HepG2 cells using 14635-1-AP (CNPY2,MSAP antibody) at dilution of 1:50 and Alexa Fluor 488-conjugated AffiniPure Goat Anti-Rabbit IgG(H+L).



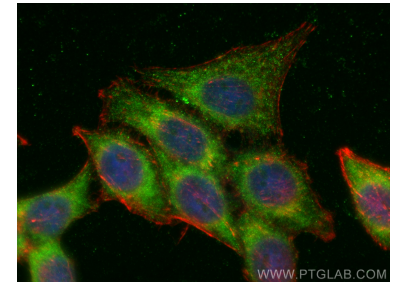
1X10⁶ HepG2 cells were intracellularly stained with 0.4 ug Anti-Human CNPY2, MSAP (14635-1-AP) and CoraLite®488-Conjugated AffiniPure Goat Anti-Rabbit IgG(H+L) at dilution 1:1000 (red), or 0.4 ug Isotype Control. Cells were fixed with 4% PFA and permeabilized with Flow Cytometry Perm Buffer (PF00011-C).



WB result of CNPY2, MSAP antibody (14635-1-AP; 1:1000; incubated at room temperature for 1.5 hours) with sh-Control and sh-CNPY2, MSAP transfected HepG2 cells.



Immunohistochemical analysis of paraffin-embedded human liver tissue slide using 14635-1-AP (CNPY2, MSAP antibody) at dilution of 1:400 (under 10x lens). Heat mediated antigen retrieval with Sodium Citrate buffer (pH 6.0).



Immunofluorescent analysis of (-20°C Ethanol) fixed HepG2 cells using CNPY2, MSAP antibody (14635-1-AP) at dilution of 1:200 and CoraLite®488-Conjugated AffiniPure Goat Anti-Rabbit IgG(H+L), CL594-Phalloidin (red).