

Allgemeine Informationen

Katalog-Nr.:
14643-1-AP

Größe:
150ul, Konzentration: 700 µg/ml von
Nanodrop und 300 µg/ml durch die
Bradford-Methode mit BSA als
Standard;

Wirt:
Kaninchen

Isotyp:
IgG

Immunogen Katalognummer:
AG6229

GenBank-Zugangsnummer:
BC065926

GeneID (NCBI):
7905

Vollständiger Name:
receptor accessory protein 5

Berechnete Masse:
21 kDa

Beobachtete Masse:
18-21 kDa

Reinigungsmethode:

Antigen-Affinitätsreinigung

Empfohlene Verdünnungen:

WB 1:2000-1:10000

IP 0.5-4.0 µg für IP und 1:500-1:2000
für WB

IHC 1:300-1:1200

IF 1:50-1:500

Anwendungen

Geprüfte Anwendungen:

FC, IF, IHC, IP, WB, ELISA

In Publikationen genannte Anwendungen:

IF, IP, WB

Getestete Reaktivität:

Human, Maus, Ratte

Zitierte Arten:

Affe, Human, Maus, Krallenfrosch (Xenopus)

Hinweis-IHC: Antigendemaskierung mit TE-Puffer pH 9,0 empfohlen. (*) Wahlweise kann die Antigendemaskierung auch mit Citratpuffer pH 6,0 erfolgen.

Positivkontrollen:

WB: HeLa-Zellen, humanes Lebergewebe, Mausherzgewebe, Maushirngewebe, Rattenherzgewebe, Rattenhirngewebe

IP: HeLa-Zellen,

IHC: humanes Kolonkarzinomgewebe,

IF: A549-Zellen, HeLa-Zellen

Hintergrundinformationen

REEP5 (receptor expression-enhancing protein 5), also named as C5orf18, DP1 or TB2, is a membrane protein belonging to DP1/Yop1p protein family. All REEP proteins contain a conserved TB2/DP1, HVA22 domain which is involved in intracellular trafficking and secretion (PMID: 19123125). REEP5 is expressed in circumvallate papillae and testis, and may have the function to influence functional cell surface expression of taste receptors (PMID: 16720576). REEP5 can interact with atlastins (ATL1 and ATL2) which are involved in modulating the structure of ER network (PMID: 19665976).

Bemerkenswerte Veröffentlichungen

Verfasser	Pubmed ID	Journal	Anwendung
Andrea Tirincci	36139500	Cells	WB
Benoît Renvoisé	27638887	Hum Mol Genet	WB
M. Elena Garcia-Pardo	34496765	BMC Bioinformatics	IF

Lagerung

Lagerungsbedingungen:

Bei -20°C lagern. Nach dem Versand ein Jahr lang stabil

Lagerungspuffer:

PBS mit 0.02% Natriumazid und 50% Glycerin pH 7.3.

Aliquotieren ist nicht notwendig bei -20°C Lagerung

***** 20ul-Größen enthalten 0.1% BSA**

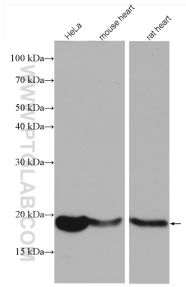
For technical support and original validation data for this product please contact:

T: 1 (888) 4PTGLAB (1-888-478-4522) (toll free in USA), or 1(312) 455-8498 (outside USA)

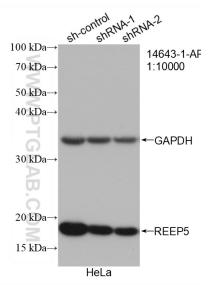
E: proteintech@ptglab.com
W: ptglab.com

This product is exclusively available under Proteintech Group brand and is not available to purchase from any other manufacturer.

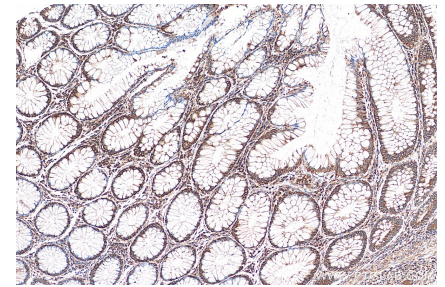
Ausgewählte Validierungsdaten



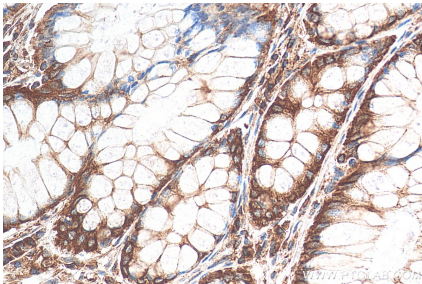
Various lysates were subjected to SDS PAGE followed by western blot with 14643-1-AP (REEP5 antibody) at dilution of 1:5000 incubated at room temperature for 1.5 hours.



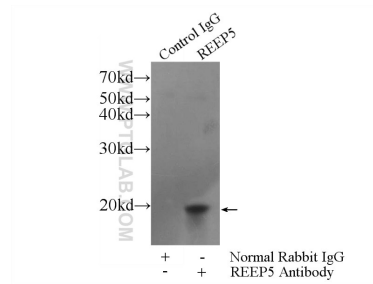
WB result of REEP5 antibody (14643-1-AP; 1:10000; incubated at room temperature for 1.5 hours) with sh-Control and sh-REEP5 transfected HeLa cells.



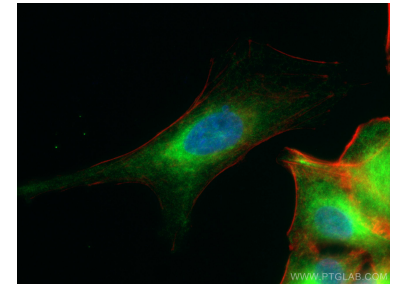
Immunohistochemical analysis of paraffin-embedded human colon cancer tissue slide using 14643-1-AP (REEP5 antibody) at dilution of 1:600 (under 10x lens). Heat mediated antigen retrieval with Tris-EDTA buffer (pH 9.0).



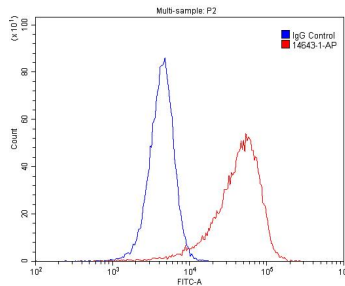
Immunohistochemical analysis of paraffin-embedded human colon cancer tissue slide using 14643-1-AP (REEP5 antibody) at dilution of 1:600 (under 40x lens). Heat mediated antigen retrieval with Tris-EDTA buffer (pH 9.0).



IP Result of anti-REEP5 (IP:14643-1-AP, 3ug; Detection:14643-1-AP 1:1000) with HeLa cells lysate 2400ug.



Immunofluorescent analysis of (4% PFA) fixed A549 cells using REEP5 antibody (14643-1-AP) at dilution of 1:200 and CoraLite®488-Conjugated AffiniPure Goat Anti-Rabbit IgG(H+L). F-actin is stained using CL555-phalloidin (red) and DNA is stained by DAPI (blue).



1X10⁶ HeLa cells were stained with .2ug REEP5 antibody (14643-1-AP, red) and control antibody (blue). Alexa Fluor 488-conjugated AffiniPure Goat Anti-Rabbit IgG(H+L) with dilution 1:1500. Cells were fixed with 4% PFA and permeabilized with 0.1% Triton X-100.