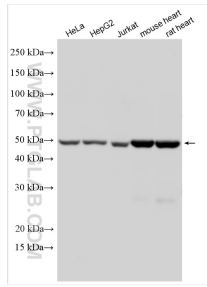
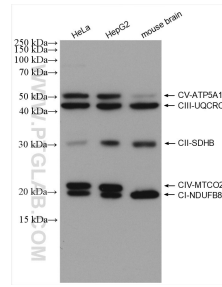




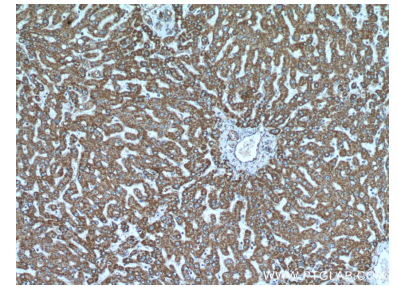
## Ausgewählte Validierungsdaten



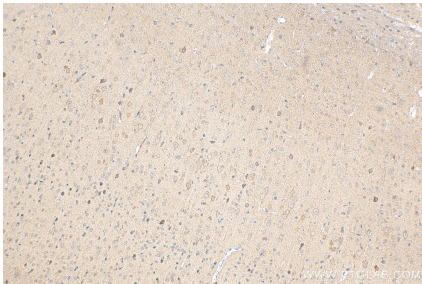
Various lysates were subjected to SDS PAGE followed by western blot with 14676-1-AP (ATP5A1 antibody) at dilution of 1:10000 incubated at room temperature for 1.5 hours.



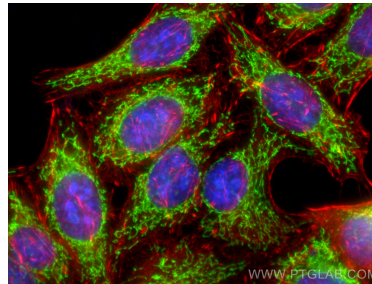
These five antibodies, ATP5A1 (14676-1-AP, 1:8000), UQCRC2 (14742-1-AP, 1:4000), SDHB (10620-1-AP, 1:8000), MTCO2 (55070-1-AP, 1:1000), NDUFB8 (14794-1-AP, 1:5000), can be assembled OXPHOS kit to detect the relative levels of the 5 OXPHOS complexes in mitochondrial preparations.



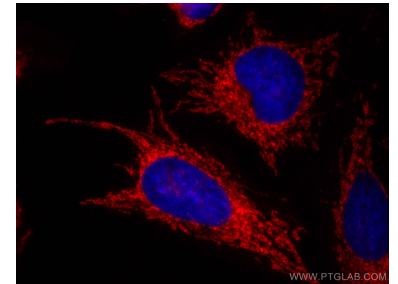
Immunohistochemical analysis of paraffin-embedded human liver tissue slide using 14676-1-AP (ATP5A1 antibody) at dilution of 1:200 (under 10x lens).



Immunohistochemical analysis of paraffin-embedded mouse brain tissue slide using 14676-1-AP (ATP5A1 antibody) at dilution of 1:400 (under 10x lens). Heat mediated antigen retrieval with Tris-EDTA buffer (pH 9.0).



Immunofluorescent analysis of (-20°C Ethanol) fixed HepG2 cells using ATP5A1 antibody (14676-1-AP) at dilution of 1:400 and Coralite@488-Conjugated AffiniPure Goat Anti-Rabbit IgG(H+L), CL594-Phalloidin (red).



Immunofluorescent analysis of (-20°C Ethanol) fixed HeLa cells using ATP5A1 antibody (14676-1-AP) at dilution of 1:800 and Coralite@594-Conjugated AffiniPure Goat Anti-Rabbit IgG(H+L).