

Allgemeine Informationen

Katalog-Nr.:

14712-1-AP

Größe:

150ul , Konzentration: 650 µg/ml von Nanodrop und 220 µg/ml durch die Bradford-Methode mit BSA als Standard;

Wirt:

Kaninchen

Isotyp:

IgG

Immunogen Katalognummer:

AG6431

GenBank-Zugangsnummer:

BC000425

GeneID (NCBI):

9601

Vollständiger Name:

protein disulfide isomerase family A, member 4

Berechnete Masse:

73 kDa

Beobachtete Masse:

72 kDa

Reinigungsmethode:

Antigen-Affinitätsreinigung

Empfohlene Verdünnungen:

WB 1:2000-1:10000

IP 0.5-4.0 ug für IP und 1:500-1:1000

für WB

IHC 1:500-1:2000

IF 1:20-1:200

Anwendungen

Geprüfte Anwendungen:

FC, IF, IHC, IP, WB, ELISA

In Publikationen genannte Anwendungen:

CoIP, IF, IHC, WB

Getestete Reaktivität:

Human, Maus, Ratte

Zitierte Arten:

Affe, Hausschwein, Human, Maus

Hinweis-IHC: Antigendemaskierung mit TE-Puffer pH 9,0 empfohlen. (*) Wahlweise kann die Antigendemaskierung auch mit Citratpuffer pH 6,0 erfolgen.

Positivkontrollen:

WB : Maushirngewebe, HeLa-Zellen, HepG2-Zellen, L02-Zellen, Mauslebergewebe, Rattenlebergewebe

IP : HeLa-Zellen,

IHC : humanes Leberkarzinomgewebe, humanes Prostatakarzinomgewebe

IF : PC-3-Zellen,

Hintergrundinformationen

PDIA4 (Protein disulfide-isomerase A4) is also named as ERP70, ERP72 and belongs to the protein disulfide isomerase family. It catalyzes the rearrangement of -S-S- bonds in proteins. ERp72 is a soluble protein localized in the ER lumen and contains the COOH-terminal retention signal, KEEL. There are 6 cysteine residues in the amino acid sequences of mouse and human ERp72. All of the cysteine residues occur in the internal thioredoxin motif, CGHC (PMID:15475357). The full length protein has a signal peptide with 20 amino acid.

Bemerkenswerte Veröffentlichungen

Verfasser	Pubmed ID	Journal	Anwendung
Shifeng Tong	36181861	Cryobiology	IF
Feng Xing	36082822	Oncol Rep	IHC,WB
Nirav Florian Chhabra	34487921	Mol Metab	WB

Lagerung

Lagerungsbedingungen:

Bei -20°C lagern. Nach dem Versand ein Jahr lang stabil

Lagerungspuffer:

PBS mit 0.02% Natriumazid und 50% Glycerin pH 7.3.

Aliquotieren ist nicht notwendig bei -20°C Lagerung

***** 20ul-Größen enthalten 0.1% BSA**

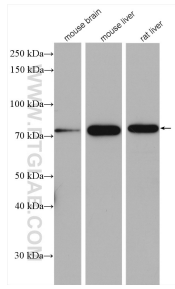
For technical support and original validation data for this product please contact:

T: 1 (888) 4PTGLAB (1-888-478-4522) (toll free in USA), or 1(312) 455-8498 (outside USA)

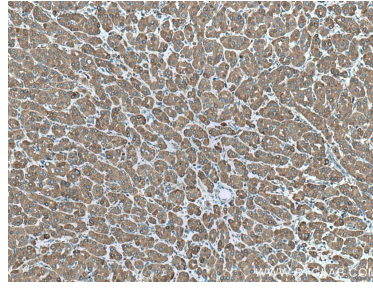
E: proteintech@ptglab.com
 W: ptglab.com

This product is exclusively available under Proteintech Group brand and is not available to purchase from any other manufacturer.

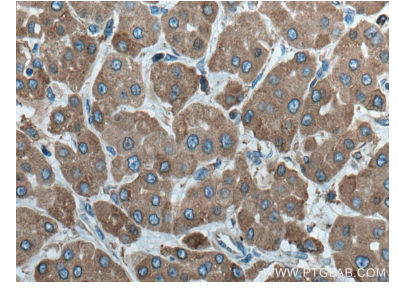
Ausgewählte Validierungsdaten



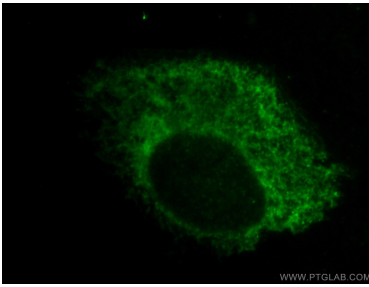
Various lysates were subjected to SDS PAGE followed by western blot with 14712-1-AP (ERp72 antibody) at dilution of 1:5000 incubated at room temperature for 1.5 hours.



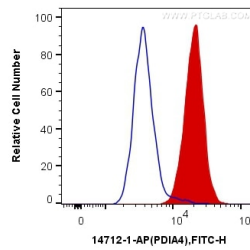
Immunohistochemical analysis of paraffin-embedded human liver cancer tissue slide using 14712-1-AP (ERp72 antibody) at dilution of 1:1000 (under 10x lens). Heat mediated antigen retrieval with Tris-EDTA buffer (pH 9.0).



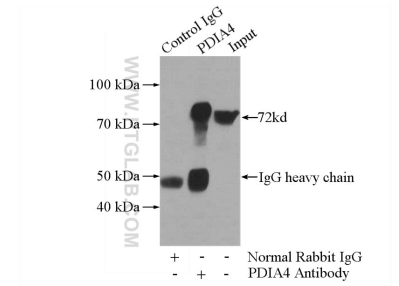
Immunohistochemical analysis of paraffin-embedded human liver cancer tissue slide using 14712-1-AP (ERp72 antibody) at dilution of 1:1000 (under 40x lens). Heat mediated antigen retrieval with Tris-EDTA buffer (pH 9.0).



Immunofluorescent analysis of PC-3 cells, using PDIA4 antibody 14712-1-AP at 1:50 dilution and FITC-labeled donkey anti-rabbit IgG (green).



1×10^6 HepG2 cells were intracellularly stained with 0.4 ug Anti-Human ERp72 (14712-1-AP) and CoraLite®488-Conjugated AffiniPure Goat Anti-Rabbit IgG(H+L) at dilution 1:1000 (red), or 0.4 ug Control Antibody. Cells were fixed with 4% PFA and permeabilized with Flow Cytometry Perm Buffer (PF00011-C).



IP Result of anti-ERp72 (IP:14712-1-AP, 4ug; Detection:14712-1-AP 1:500) with HeLa cells lysate 2800ug.