

Nur für Forschungszwecke

# UCHL1/PGP9.5 Polyklonaler Antikörper



Katalog-Nr.:14730-1-AP

Vorgestelltes Produkt

85 Publikationen

## Allgemeine Informationen

<b>Katalog-Nr.:</b> 14730-1-AP	<b>GenBank-Zugangsnummer:</b> BC000332	<b>Reinigungsmethode:</b> Antigen-Affinitätsreinigung
<b>Größe:</b> 150ul , Konzentration: 500 µg/ml von Nanodrop;	<b>GeneID (NCBI):</b> 7345	<b>Empfohlene Verdünnungen:</b> WB 1:5000-1:50000 IF 1:200-1:800
<b>Wirt:</b> Kaninchen	<b>Vollständiger Name:</b> ubiquitin carboxyl-terminal esterase L1 (ubiquitin thiolesterase)	
<b>Isotyp:</b> IgG	<b>Berechnete Masse:</b> 25 kDa	
<b>Immunogen Katalognummer:</b> AG6490	<b>Beobachtete Masse:</b> 27 kDa	

## Anwendungen

### Geprüfte Anwendungen:

FC, IF, WB, ELISA

### In Publikationen genannte Anwendungen:

CoIP, ELISA, IF, IHC, WB

### Getestete Reaktivität:

Human, Maus, Ratte

### Zitierte Arten:

Affe, Hausschwein, Human, Maus, Ratte, Nicht-Humane Primaten

### Positivkontrollen:

**WB** : A549-Zellen, C6-Zellen, Maushirngewebe, NCI-H1299-Zellen, Neuro-2a-Zellen, Rattenhirngewebe, SH-SY5Y-Zellen

**IF** : A549-Zellen, Maushirngewebe

## Hintergrundinformationen

UCHL1(Ubiquitin carboxyl-terminal hydrolase isozyme L1) is a member of a gene family whose products hydrolyze small C-terminal adducts of ubiquitin to generate the ubiquitin monomer. Expression of UCHL1 is highly specific to neurons and to cells of the diffuse neuroendocrine system and their tumors. It is present in all neurons(PMID: 6343558). This protein is present in brain at concentrations at least 50 times greater than in other organs and is a major protein component of neuronal cytoplasm (PMID:7217993). And UCHL1 is a Parkinson's disease susceptibility gene (PMID:15048890).

## Bemerkenswerte Veröffentlichungen

Verfasser	Pubmed ID	Journal	Anwendung
Wisam Toma	36096180	Exp Neurol	IHC
Matthew Bratkowski	36087583	Neuron	IF
Haochen Jiang	28918935	Cell Metab	WB,IF

## Lagerung

### Lagerungsbedingungen:

Bei -20°C lagern. Nach dem Versand ein Jahr lang stabil

### Lagerungspuffer:

PBS mit 0.02% Natriumazid und 50% Glycerin pH 7.3.

Aliquotieren ist nicht notwendig bei -20°C Lagerung

\*\*\* 20ul-Größen enthalten 0.1% BSA

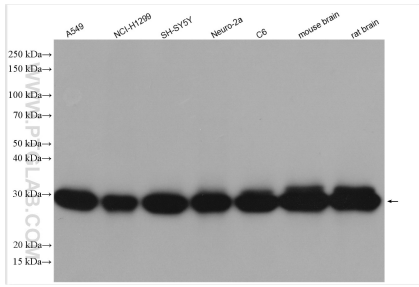
For technical support and original validation data for this product please contact:

T: 1 (888) 4PTGLAB (1-888-478-4522) (toll free in USA), or 1(312) 455-8498 (outside USA)

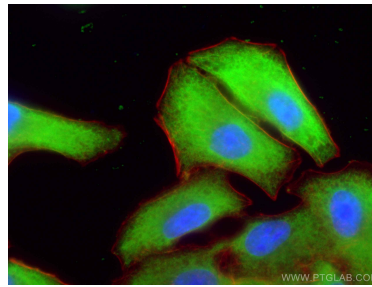
E: proteintech@ptglab.com  
W: ptglab.com

This product is exclusively available under Proteintech Group brand and is not available to purchase from any other manufacturer.

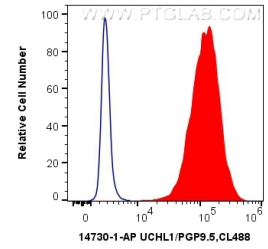
## Ausgewählte Validierungsdaten



Various lysates were subjected to SDS PAGE followed by western blot with 14730-1-AP (UCHL1/PGP9.5 antibody) at dilution of 1:20000 incubated at room temperature for 1.5 hours.



Immunofluorescent analysis of (-20°C Ethanol) fixed A549 cells using UCHL1/PGP9.5 antibody (14730-1-AP) at dilution of 1:400 and CoraLite@488-Conjugated AffiniPure Goat Anti-Rabbit IgG(H+L).



1X10<sup>6</sup> C6 cells were intracellularly stained with 0.4 ug Anti-Human UCHL1/PGP9.5 (14730-1-AP) and CoraLite@488-Conjugated AffiniPure Goat Anti-Rabbit IgG(H+L) at dilution 1:1000 (red), or 0.4 ug Control Antibody. Cells were fixed with 4% PFA and permeabilized with Flow Cytometry Perm Buffer (PF00011-C).