

Nur für Forschungszwecke

UQCRC2 Polyklonaler Antikörper

Katalog-Nr.:14742-1-AP

Vorgestelltes Produkt

46 Publikationen



Allgemeine Informationen

Katalog-Nr.:

14742-1-AP

Größe:

150ul, Konzentration: 800 µg/ml von

Nanodrop;

Wirt:

Kaninchen

Isotyp:

IgG

Immunogen Katalognummer:

AG6432

GenBank-Zugangsnummer:

BC000484

GeneID (NCBI):

7385

Vollständiger Name:

ubiquinol-cytochrome c reductase

core protein II

Berechnete Masse:

48 kDa

Beobachtete Masse:

48 kDa

Reinigungsmethode:

Antigen-Affinitätsreinigung

Empfohlene Verdünnungen:

WB 1:2000-1:12000

IP 0.5-4.0 µg für IP und 1:500-1:2000

für WB

IHC 1:50-1:500

IF 1:50-1:500

Anwendungen

Geprüfte Anwendungen:

FC, IF, IHC, IP, WB, ELISA

In Publikationen genannte Anwendungen:

IF, IHC, WB

Getestete Reaktivität:

Human, Maus, Ratte

Zitierte Arten:

Human, Maus, Ratte, Zebrafisch

Hinweis-IHC: Antigenmaskierung mit TE-

Puffer pH 9,0 empfohlen. (*) Wahlweise

kann die Antigenmaskierung auch mit

Citratpuffer pH 6,0 erfolgen.

Positivkontrollen:

WB: Maushirngewebe, humanes Kolongewebe, Mausherzgewebe, Maus-Kolongewebe, Maus-Plazenta-Gewebe, Maus-Skelettmuskelgewebe, Rattenherzgewebe, SGC-7901-Zellen

IP: Maushirngewebe,

IHC: humanes Kolonkarzinomgewebe,

IF: HepG2-Zellen,

Hintergrundinformationen

UQCRC2(Ubiquinol-cytochrome-c reductase complex core protein 2) is also named as complex III subunit 2, core protein II and belongs to the UQCRC2/QCR2 subfamily. The bc1 complex contains 11 subunits: 3 respiratory subunits (cytochrome b, cytochrome c1 and Rieske/UQCRFS1), 2 core proteins (UQCRC1/QCR1 and UQCRC2/QCR2) and 6 low-molecular weight proteins (UQCRH/QCR6, UQCRB/QCR7, UQCRQ/QCR8, UQCR10/QCR9, UQCR11/QCR10 and a cleavage product of Rieske/UQCRFS1) and is part of the mitochondrial respiratory chain. This protein distributes in mitochondrion inner membrane, peripheral membrane protein and matrix side.

Bemerkenswerte Veröffentlichungen

Verfasser	Pubmed ID	Journal	Anwendung
Giulia Notarangelo	36173860	Science	WB
Wen-Kuan Huang	34638938	Int J Mol Sci	WB
Lei Wu	33129969	J Nutr Biochem	WB

Lagerung

Lagerungsbedingungen:

Bei -20°C lagern. Nach dem Versand ein Jahr lang stabil

Lagerungspuffer:

PBS mit 0.02% Natriumazid und 50% Glycerin pH 7.3.

Aliquotieren ist nicht notwendig bei -20°C Lagerung

*** 20ul-Größen enthalten 0.1% BSA

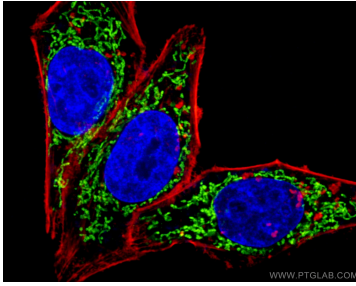
For technical support and original validation data for this product please contact:

T: 1 (888) 4PTGLAB (1-888-478-4522) (toll free in USA), or 1(312) 455-8498 (outside USA)

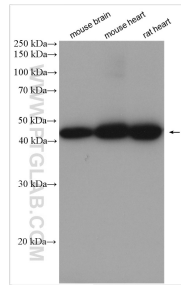
E: proteintech@ptglab.com
W: ptglab.com

This product is exclusively available under Proteintech Group brand and is not available to purchase from any other manufacturer.

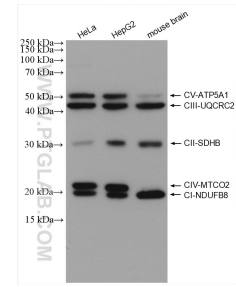
Ausgewählte Validierungsdaten



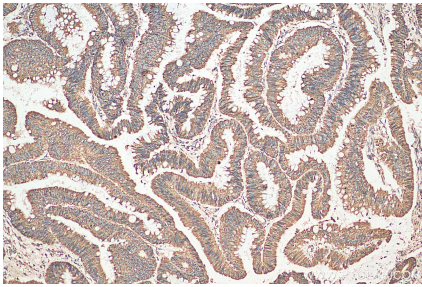
Immunofluorescent analysis of (4% PFA) fixed HepG2 cells using 14742-1-AP (UQCRC2 antibody) at dilution of 1:100 and CoraLite488-Conjugated AffiniPure Goat Anti-Rabbit IgG(H+L); Phalloidin stains F-actin (Red).



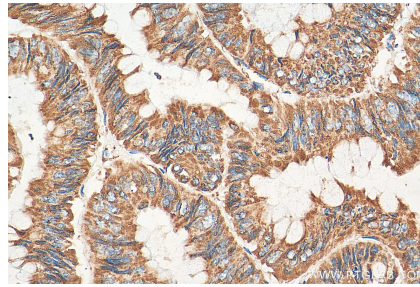
Various lysates were subjected to SDS PAGE followed by western blot with 14742-1-AP (UQCRC2 antibody) at dilution of 1:6000 incubated at room temperature for 1.5 hours.



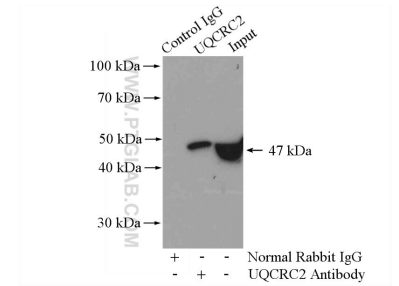
These five antibodies, ATP5A1 (14676-1-AP, 1:8000), UQCRC2 (14742-1-AP, 1:4000), SDHB (10620-1-AP, 1:8000), MTCO2 (55070-1-AP, 1:1000), NDUFB8 (14794-1-AP, 1:5000), can be assembled OXPHOS kit to detect the relative levels of the 5 OXPHOS complexes in mitochondrial preparations.



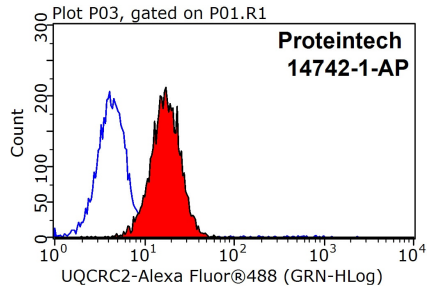
Immunohistochemical analysis of paraffin-embedded human colon cancer tissue slide using 14742-1-AP (UQCRC2 antibody) at dilution of 1:200 (under 10x lens). Heat mediated antigen retrieval with Tris-EDTA buffer (pH 9.0).



Immunohistochemical analysis of paraffin-embedded human colon cancer tissue slide using 14742-1-AP (UQCRC2 antibody) at dilution of 1:200 (under 40x lens). Heat mediated antigen retrieval with Tris-EDTA buffer (pH 9.0).



IP Result of anti-UQCRC2 (IP:14742-1-AP, 4ug; Detection:14742-1-AP 1:1000) with mouse brain tissue lysate 4000ug.



1X10⁶ HepG2 cells were stained with 0.2ug UQCRC2 antibody (14742-1-AP, red) and control antibody (blue). Fixed with 90% MeOH blocked with 3% BSA (30 min). Alexa Fluor 488-conjugated AffiniPure Goat Anti-Rabbit IgG(H+L) with dilution 1:1500.