

Nur für Forschungszwecke

SDF2 Polyklonaler Antikörper

Katalog-Nr.:14747-1-AP



Allgemeine Informationen

| | | |
|--|---|--|
| Katalog-Nr.: 14747-1-AP | GenBank-Zugangsnummer: BC000500 | Reinigungsmethode: Antigen-Affinitätsreinigung |
| Größe: 150ul, Konzentration: 500 µg/ml von Nanodrop; | GeneID (NCBI): 6388 | Empfohlene Verdünnungen: WB 1:1000-1:4000 |
| Wirt: Kaninchen | Vollständiger Name: stromal cell-derived factor 2 | |
| Isotyp: IgG | Berechnete Masse: 23 kDa | |
| Immunogen Katalognummer: AG6480 | Beobachtete Masse: 23 kDa | |

Anwendungen

| | |
|--|--|
| Geprüfte Anwendungen: WB, ELISA | Positivkontrollen: WB : Jurkat-Zellen, HUVEC-Zellen, U2OS-Zellen |
| Getestete Reaktivität: Human, Maus | |

Hintergrundinformationen

SDF-2 is a small protein of 211 amino acids that is ubiquitously expressed in lung, breast, colon, liver and kidney. SDF-2 is localized in the ER and has been reported to get involved in multiple endoplasmic reticulum (ER) functions, including the misfolded protein catabolic process, protein glycosylation, and ER protein quality control.

Lagerung

Lagerungsbedingungen:
Bei -20°C lagern. Nach dem Versand ein Jahr lang stabil
Lagerungspuffer:
PBS mit 0.02% Natriumazid und 50% Glycerin pH 7.3.
Aliquotieren ist nicht notwendig bei -20°C Lagerung

*** 20ul-Größen enthalten 0.1% BSA

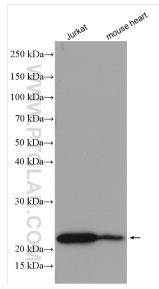
For technical support and original validation data for this product please contact:

T: 1 (888) 4PTGLAB (1-888-478-4522) (toll free in USA), or 1(312) 455-8498 (outside USA)

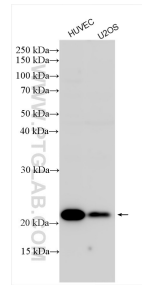
E: proteintech@ptglab.com
W: ptglab.com

This product is exclusively available under Proteintech Group brand and is not available to purchase from any other manufacturer.

Ausgewählte Validierungsdaten



Various lysates were subjected to SDS PAGE followed by western blot with 14747-1-AP (SDF2 antibody) at dilution of 1:2000 incubated at room temperature for 1.5 hours.



Various lysates were subjected to SDS PAGE followed by western blot with 14747-1-AP (SDF2 antibody) at dilution of 1:2000 incubated at room temperature for 1.5 hours.