

## Allgemeine Informationen

<b>Katalog-Nr.:</b> 14754-1-AP	<b>GenBank-Zugangsnummer:</b> BC000419	<b>Reinigungsmethode:</b> Antigen-Affinitätsreinigung
<b>Größe:</b> 150ul , Konzentration: 500 µg/ml von Nanodrop;	<b>GeneID (NCBI):</b> 1312	<b>Empfohlene Verdünnungen:</b> WB 1:1000-1:4000 IP 0.5-4.0 ug für IP und 1:500-1:1000 für WB
<b>Wirt:</b> Kaninchen	<b>Vollständiger Name:</b> catechol-O-methyltransferase	<b>IHC 1:20-1:200</b> <b>IF 1:50-1:500</b>
<b>Isotyp:</b> IgG	<b>Berechnete Masse:</b> 30 kDa	
<b>Immunogen Katalognummer:</b> AG6502	<b>Beobachtete Masse:</b> 28-30 kDa	

## Anwendungen

<b>Geprüfte Anwendungen:</b> FC, IF, IHC, IP, WB, ELISA	<b>Positivkontrollen:</b> WB : HEK-293-Zellen, K-562-Zellen
<b>In Publikationen genannte Anwendungen:</b> IF, IHC, WB	<b>IP :</b> K-562-Zellen,
<b>Getestete Reaktivität:</b> Human, Maus, Ratte	<b>IHC :</b> humanes Lebergewebe,
<b>Zitierte Arten:</b> Human, Maus, Ratte	<b>IF :</b> Maus-Cerebellum-Gewebe, HepG2-Zellen

**Hinweis-IHC: Antigenmaskierung mit TE-Puffer pH 9,0 empfohlen. (\*) Wahlweise kann die Antigenmaskierung auch mit Citratpuffer pH 6,0 erfolgen.**

## Hintergrundinformationen

Catechol O-methyltransferase (COMT) is an important enzyme that catalyzes O-methylation and inactivation of metabolically active catechol-containing bioactive molecules and drugs. The mammalian COMT enzyme exists in soluble form (24-26 kDa) and membrane-bound form (28-30 kDa), which are encoded by a single gene utilizing different promoters.

## Bemerkenswerte Veröffentlichungen

Verfasser	Pubmed ID	Journal	Anwendung
Adedamola Bayo-Olugbami	32912107	Nutr Neurosci	WB
Yonglong Zhou	34725639	Biomed Res Int	WB,IF
Yinrui Guo	34045460	Transl Psychiatry	WB

## Lagerung

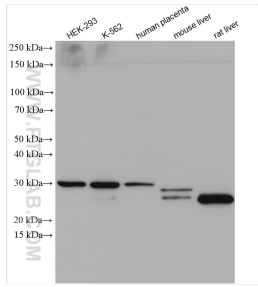
**Lagerungsbedingungen:**  
Bei -20°C lagern. Nach dem Versand ein Jahr lang stabil  
**Lagerungspuffer:**  
PBS mit 0.02% Natriumazid und 50% Glycerin pH 7.3.  
Aliquotieren ist nicht notwendig bei -20°C Lagerung

**\*\*\* 20ul-Größen enthalten 0.1% BSA**

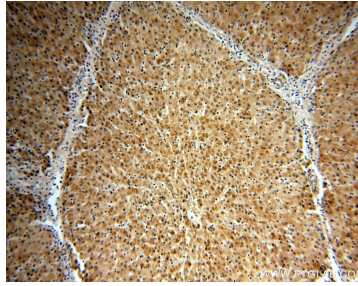
For technical support and original validation data for this product please contact:  
T: 1 (888) 4PTGLAB (1-888-478-4522) (toll free in USA), or 1(312) 455-8498 (outside USA)  
E: [proteintech@ptglab.com](mailto:proteintech@ptglab.com)  
W: [ptglab.com](http://ptglab.com)

**This product is exclusively available under Proteintech Group brand and is not available to purchase from any other manufacturer.**

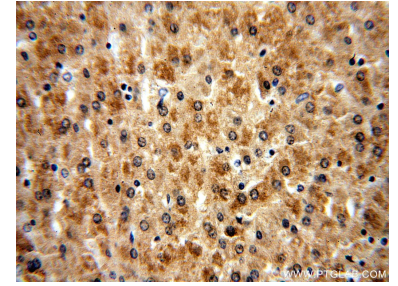
## Ausgewählte Validierungsdaten



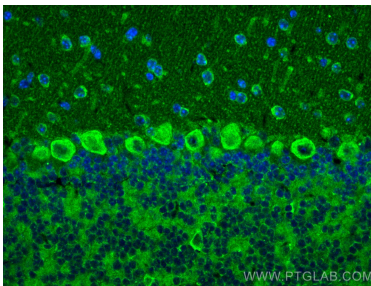
Various lysates were subjected to SDS PAGE followed by western blot with 14754-1-AP (COMT antibody) at dilution of 1:2000 incubated at room temperature for 1.5 hours.



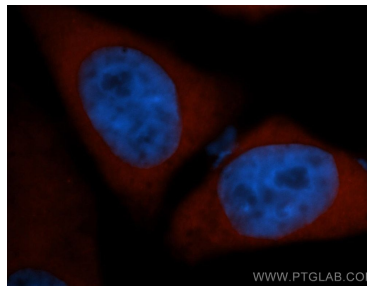
Immunohistochemical analysis of paraffin-embedded human liver using 14754-1-AP (COMT antibody) at dilution of 1:100 (under 10x lens).



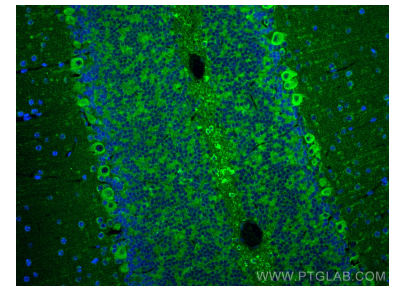
Immunohistochemical analysis of paraffin-embedded human liver using 14754-1-AP (COMT antibody) at dilution of 1:100 (under 40x lens).



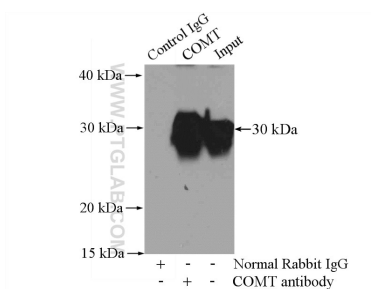
Immunofluorescent analysis of (4% PFA) fixed mouse cerebellum tissue using COMT antibody (14754-1-AP) at dilution of 1:200 and CoraLite®488-Conjugated AffiniPure Goat Anti-Rabbit IgG(H+L).



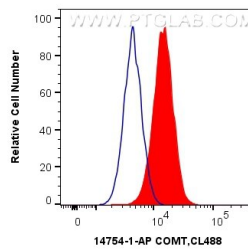
Immunofluorescent analysis of HepG2 cells, using COMT antibody 14754-1-AP at 1:50 dilution and Rhodamine-labeled goat anti-rabbit IgG (red). Blue pseudocolor = DAPI (fluorescent DNA dye).



Immunofluorescent analysis of (4% PFA) fixed mouse cerebellum tissue using COMT antibody (14754-1-AP) at dilution of 1:200 and CoraLite®488-Conjugated AffiniPure Goat Anti-Rabbit IgG(H+L).



IP Result of anti-COMT (IP:14754-1-AP, 4ug; Detection:14754-1-AP 1:500) with K-562 cells lysate 1200ug.



$1 \times 10^6$  HepG2 cells were intracellularly stained with 0.4 ug Anti-Human COMT (14754-1-AP) and CoraLite®488-Conjugated AffiniPure Goat Anti-Rabbit IgG(H+L) at dilution 1:1000 (red), or 0.4 ug Isotype Control. Cells were fixed with 4% PFA and permeabilized with Flow Cytometry Perm Buffer (PF00011-C).