

Nur für Forschungszwecke

PSMD11 Polyklonaler Antikörper

Katalog-Nr.:14786-1-AP

Vorgestelltes Produkt

7 Publikationen



Allgemeine Informationen

Katalog-Nr.:
14786-1-AP

Größe:
150ul, Konzentration: 350 µg/ml von
Nanodrop und 333 µg/ml durch die
Bradford-Methode mit BSA als
Standard;

Wirt:
Kaninchen

Isotyp:
IgG

Immunogen Katalognummer:
AG6435

GenBank-Zugangsnummer:
BC000437

GeneID (NCBI):
5717

Vollständiger Name:
proteasome (prosome, macropain)
26S subunit, non-ATPase, 11

Berechnete Masse:
47 kDa

Beobachtete Masse:
47 kDa

Reinigungsmethode:

Antigen-Affinitätsreinigung

Empfohlene Verdünnungen:

WB 1:500-1:2000
IP 0.5-4.0 µg für IP und 1:500-1:1000
für WB
IF 1:10-1:100

Anwendungen

Geprüfte Anwendungen:

IF, IP, WB, ELISA

In Publikationen genannte Anwendungen:

IF, WB

Getestete Reaktivität:

Human, Maus, Ratte

Zitierte Arten:

Human, Maus, Ratte

Positivkontrollen:

WB: HeLa-Zellen, Maushodengewebe, MCF-7-Zellen,
Rattenhirngewebe

IP: MCF-7-Zellen,

IF: MCF-7-Zellen,

Hintergrundinformationen

The 26 S proteasome is a 2.5-MDa molecular machine that degrades ubiquitinated proteins in eukaryotic cells. It consists of a proteolytic core particle and two 19 S regulatory particles (RPs) composed of 6 ATPase (RPT) and 13 non-ATPase (RPN) subunits. PSMD11 gene encodes 19S proteasome subunit RPN6. Increased levels of PSMD11 and a corresponding increased assembly of the 26S/30S proteasome is correlated with high proteasome activity. In vitro ectopic expression of PSMD11 is sufficient to increase proteasome assembly and activity. Latest research has implicated PSMD11 in regulation of human embryonic stem cells function.

Bemerkenswerte Veröffentlichungen

Verfasser	Pubmed ID	Journal	Anwendung
Zhen Dai	35253427	J Med Chem	WB
Linlin Zhao	33517884	BMC Dev Biol	WB,IF
Vidya Sagar Kesireddy	31431059	FASEB J	WB

Lagerung

Lagerungsbedingungen:

Bei -20°C lagern. Nach dem Versand ein Jahr lang stabil

Lagerungspuffer:

PBS mit 0.02% Natriumazid und 50% Glycerin pH 7.3.

Aliquotieren ist nicht notwendig bei -20°C Lagerung

*** 20ul-Größen enthalten 0.1% BSA

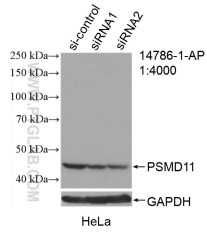
For technical support and original validation data for this product please contact:

T: 1 (888) 4PTGLAB (1-888-478-4522) (toll free
in USA), or 1(312) 455-8498 (outside USA)

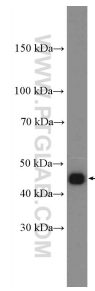
E: proteintech@ptglab.com
W: ptglab.com

This product is exclusively available under Proteintech Group brand and is not available to purchase from any other manufacturer.

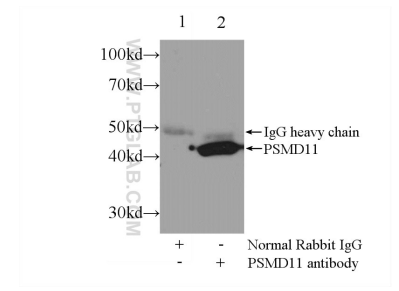
Ausgewählte Validierungsdaten



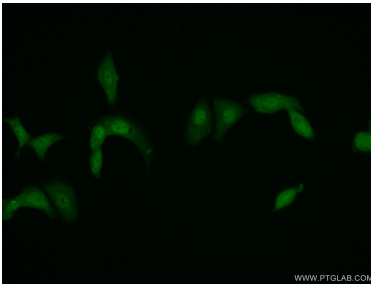
WB result of PSMD11 antibody (14786-1-AP; 1:4000; incubated at room temperature for 1.5 hours) with sh-Control and sh-PSMD11 transfected HeLa cells.



HeLa cells were subjected to SDS PAGE followed by western blot with 14786-1-AP (PSMD11 Antibody) at dilution of 1:1000 incubated at room temperature for 1.5 hours.



IP Result of anti-PSMD11 (IP:14786-1-AP, 3ug; Detection:14786-1-AP 1:500) with MCF-7 cells lysate 2000ug.



Immunofluorescent analysis of MCF-7 cells using 14786-1-AP (PSMD11 antibody) at dilution of 1:25 and Alexa Fluor 488-conjugated AffiniPure Goat Anti-Rabbit IgG(H+L).