

Allgemeine Informationen

Katalog-Nr.:

14787-1-AP

Größe:

150ul , Konzentration: 700 µg/ml von Nanodrop;

Wirt:

Kaninchen

Isotyp:

IgG

Immunogen Katalognummer:

AG6437

GenBank-Zugangsnummer:

BC000440

GeneID (NCBI):

875

Vollständiger Name:

cystathionine-beta-synthase

Berechnete Masse:

61 kDa

Beobachtete Masse:

61-63 kDa

Reinigungsmethode:

Antigen-Affinitätsreinigung

Empfohlene Verdünnungen:

WB 1:2000-1:16000

IP 0.5-4.0 µg für IP und 1:500-1:1000

für WB

IHC 1:100-1:400

IF 1:20-1:200

Anwendungen

Geprüfte Anwendungen:

IF, IHC, IP, WB, ELISA

In Publikationen genannte Anwendungen:

IF, IHC, WB

Getestete Reaktivität:

Human, Maus, Ratte

Zitierte Arten:

Human, Hund, Kaninchen, Maus, Ratte

Hinweis-IHC: Antigendemaskierung mit TE-Puffer pH 9,0 empfohlen. (*) Wahlweise kann die Antigendemaskierung auch mit Citratpuffer pH 6,0 erfolgen.

Positivkontrollen:

WB: HEK-293-Zellen, HeLa-Zellen, HepG2-Zellen, LNCaP-Zellen, Maushirngewebe, Maus-Kolongewebe, Mausnierengewebe, MCF-7-Zellen, Rattenhirngewebe, Rattenlebergewebe, Rattennierengewebe, SKOV-3-Zellen, THP-1-Zellen

IP: Mausnierengewebe,

IHC: humanes Pankreaskarzinomgewebe, humanes Kolongewebe

IF: HeLa-Zellen,

Hintergrundinformationen

The CBS gene encodes cystathionine beta-synthase, which catalyzes the first irreversible step of transsulfuration. The CBS enzyme is a homotetramer of 63-kD subunits and requires pyridoxal phosphate and heme for activity(PMID:11230183). CBS protein is localized in most areas of the brain, but predominantly in the cell bodies and neuronal processes of Purkinje cells and Ammon's horn neurons(PMID:12588964).

Bemerkenswerte Veröffentlichungen

Verfasser	Pubmed ID	Journal	Anwendung
Pilar González-García	32975579	Hum Mol Genet	WB
Shanwen Chen	31542354	Cancer Lett	WB,IHC,IF
Ches'Nique M Phillips	28923859	Cancer Res	WB,IHC

Lagerung

Lagerungsbedingungen:

Bei -20°C lagern. Nach dem Versand ein Jahr lang stabil

Lagerungspuffer:

PBS mit 0.02% Natriumazid und 50% Glycerin pH 7.3.

Aliquotieren ist nicht notwendig bei -20°C Lagerung

*** 20ul-Größen enthalten 0.1% BSA

For technical support and original validation data for this product please contact:

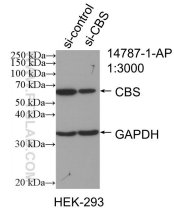
T: 1 (888) 4PTGLAB (1-888-478-4522) (toll free in USA), or 1(312) 455-8498 (outside USA)

E: proteintech@ptglab.com

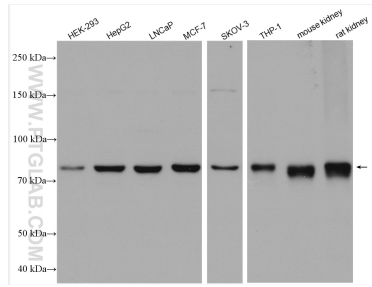
W: ptglab.com

This product is exclusively available under Proteintech Group brand and is not available to purchase from any other manufacturer.

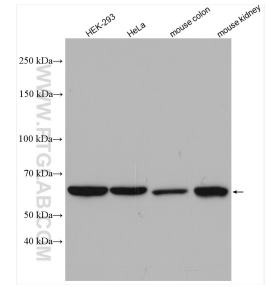
Ausgewählte Validierungsdaten



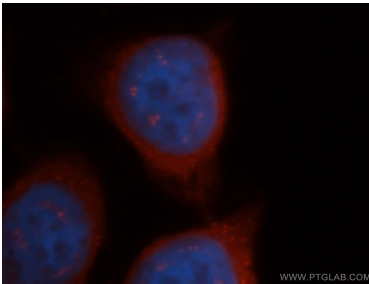
WB result of CBS antibody (14787-1-AP; 1:3000; incubated at room temperature for 1.5 hours) with sh-Control and sh-CBS transfected HEK-293 cells.



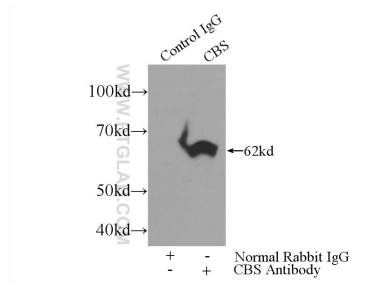
Various lysates were subjected to SDS PAGE followed by western blot with 14787-1-AP (CBS antibody) at dilution of 1:8000 incubated at room temperature for 1.5 hours.



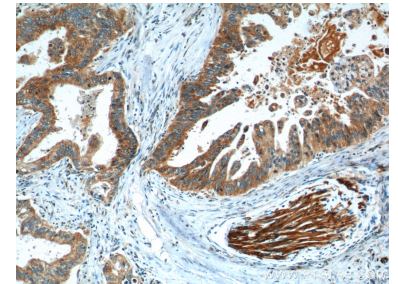
Various lysates were subjected to SDS PAGE followed by western blot with 14787-1-AP (CBS antibody) at dilution of 1:2500 incubated at room temperature for 1.5 hours.



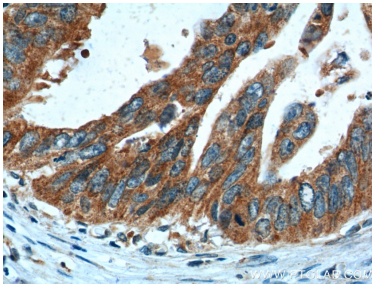
Immunofluorescent analysis of HeLa cells, using CBS antibody 14787-1-AP at 1:50 dilution and Rhodamine-labeled goat anti-rabbit IgG (red). Blue pseudocolor = DAPI (fluorescent DNA dye).



IP Result of anti-CBS (IP:14787-1-AP, 3ug; Detection:14787-1-AP 1:500) with mouse kidney tissue lysate 4000ug.



Immunohistochemical analysis of paraffin-embedded human pancreas cancer tissue slide using 14787-1-AP (CBS Antibody) at dilution of 1:200 (under 10x lens). Heat mediated antigen retrieval with Tris-EDTA buffer (pH 9.0).



Immunohistochemical analysis of paraffin-embedded human pancreas cancer tissue slide using 14787-1-AP (CBS Antibody) at dilution of 1:200 (under 40x lens). Heat mediated antigen retrieval with Tris-EDTA buffer (pH 9.0).