

Nur für Forschungszwecke

# CAMKV Polyklonaler Antikörper

Katalog-Nr.:14788-1-AP

2 Publikationen



## Allgemeine Informationen

Katalog-Nr.:  
14788-1-AP

Größe:  
150ul , Konzentration: 500 µg/ml von  
Nanodrop und 267 µg/ml durch die  
Bradford-Methode mit BSA als  
Standard;

Wirt:  
Kaninchen

Isotyp:  
IgG

Immunogen Katalognummer:  
AG6438

GenBank-Zugangsnummer:  
BC000497

GeneID (NCBI):  
79012

Vollständiger Name:  
CaM kinase-like vesicle-associated

Berechnete Masse:  
54 kDa

Beobachtete Masse:  
54-75 kDa

Reinigungsmethode:

Antigen-Affinitätsreinigung

Empfohlene Verdünnungen:

WB 1:500-1:2400  
IP 0.5-4.0 ug für IP und 1:500-1:1000  
für WB  
IF 1:50-1:500

## Anwendungen

Geprüfte Anwendungen:

IF, IP, WB,ELISA

In Publikationen genannte Anwendungen:

WB

Getestete Reaktivität:

Human, Maus, Ratte

Zitierte Arten:

Human, Maus

Positivkontrollen:

WB : Maushirngewebe, HeLa-Zellen, Mausmilzgewebe,  
PC-3-Zellen

IP : Maushirngewebe,

IF : Maushirngewebe,

## Hintergrundinformationen

CAMKV(CaM kinase-like vesicle-associated protein) is also named as 1G5,VACAMKL and belongs to the CAMK Ser/Thr protein kinase family. The CAMKV protein, which accumulates predominantly during postnatal development, binds to calmodulin in the presence of calcium. It is detected only in the CNS, is absent from cerebellum, but is detected in most other brain regions, especially regions of the cortex. The protein is predominantly detected in association with the plasma membrane of somatic cell and in neurites, both axons and dendrites, and is frequently observed in active zones, usually associated with vesicle-like structures. Its sequence suggests that 1G5 may be membrane associated(PMID:8283228).

## Bemerkenswerte Veröffentlichungen

Verfasser	Pubmed ID	Journal	Anwendung
Qingyang Zhang	34551807	Mol Neurodegener	WB
Tianwei Chen	36453019	Mol Oncol	WB

## Lagerung

Lagerungsbedingungen:

Bei -20°C lagern. Nach dem Versand ein Jahr lang stabil

Lagerungspuffer:

PBS mit 0.02% Natriumazid und 50% Glycerin pH 7.3.

Aliquotieren ist nicht notwendig bei -20°C Lagerung

\*\*\* 20ul-Größen enthalten 0.1% BSA

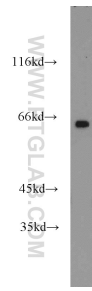
For technical support and original validation data for this product please contact:

T: 1 (888) 4PTGLAB (1-888-478-4522) (toll free  
in USA), or 1(312) 455-8498 (outside USA)

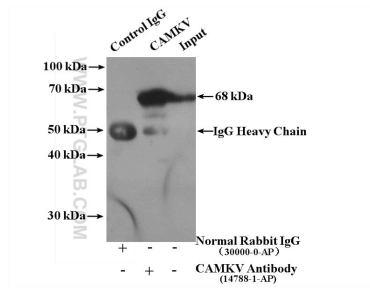
E: proteintech@ptglab.com  
W: ptglab.com

This product is exclusively available under Proteintech Group brand and is not available to purchase from any other manufacturer.

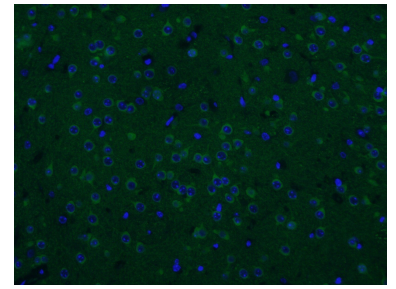
## Ausgewählte Validierungsdaten



mouse brain tissue were subjected to SDS PAGE followed by western blot with 14788-1-AP (CAMKV antibody) at dilution of 1:1200 incubated at room temperature for 1.5 hours.



IP Result of anti-CAMKV (IP:14788-1-AP, 4ug; Detection:14788-1-AP 1:500) with mouse brain tissue lysate 4000ug.



Immunofluorescent analysis of (4% PFA) fixed mouse brain tissue using 14788-1-AP (CAMKV antibody) at dilution of 1:50 and CoraLite488-Conjugated AffiniPure Goat Anti-Rabbit IgG(H+L).