

Allgemeine Informationen

Katalog-Nr.: 14800-1-AP	GenBank-Zugangsnummer: BC000525	Reinigungsmethode: Antigen-Affinitätsreinigung
Größe: 150ul , Konzentration: 550 µg/ml von Nanodrop;	GeneID (NCBI): 2806	Empfohlene Verdünnungen: WB 1:2000-1:16000 IHC 1:50-1:500 IF 1:20-1:200
Wirt: Kaninchen	Vollständiger Name: glutamic-oxaloacetic transaminase 2, mitochondrial (aspartate aminotransferase 2)	
Isotyp: IgG	Berechnete Masse: 47 kDa	
Immunogen Katalognummer: AG6514	Beobachtete Masse: 43-45 kDa	

Anwendungen

Geprüfte Anwendungen:

FC, IF, IHC, WB, ELISA

In Publikationen genannte Anwendungen:

CoIP, IHC, WB

Getestete Reaktivität:

Human, Maus, Ratte

Zitierte Arten:

Human, Maus, Ratte

Hinweis-IHC: Antigenmaskierung mit TE-Puffer pH 9,0 empfohlen. (*) Wahlweise kann die Antigenmaskierung auch mit Citratpuffer pH 6,0 erfolgen.

Positivkontrollen:

WB : A431-Zellen, HEK-293-Zellen, HepG2-Zellen, Mausherzgewebe, Mausmilzgewebe

IHC : humanes Mammakarzinomgewebe, humanes Hautgewebe, humanes Lebergewebe, humanes Nierengewebe, Rattenherzgewebe, Rattenhirngewebe

IF : MCF-7-Zellen,

Hintergrundinformationen

GOT2 encodes the mitochondrial glutamate oxaloacetate transaminase and plays an essential role in the intracellular NAD(H) redox balance. Upregulation of GOT2 has been reported in various cancers, including breast cancer and pancreatic cancer. GOT2 mutation leads to autosomal recessive neurometabolic disorder.

Bemerkenswerte Veröffentlichungen

Verfasser	Pubmed ID	Journal	Anwendung
Yajuan Zhao	34557495	Front Cell Dev Biol	IHC
Shizhen Qin	27575953	J Proteome Res	WB
Rongfu Tu	34601505	Oncogene	WB

Lagerung

Lagerungsbedingungen:

Bei -20°C lagern. Nach dem Versand ein Jahr lang stabil

Lagerungspuffer:

PBS mit 0.02% Natriumazid und 50% Glycerin pH 7.3.

Aliquotieren ist nicht notwendig bei -20°C Lagerung

*** 20ul-Größen enthalten 0.1% BSA

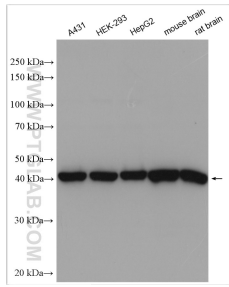
For technical support and original validation data for this product please contact:

T: 1 (888) 4PTGLAB (1-888-478-4522) (toll free in USA), or 1(312) 455-8498 (outside USA)

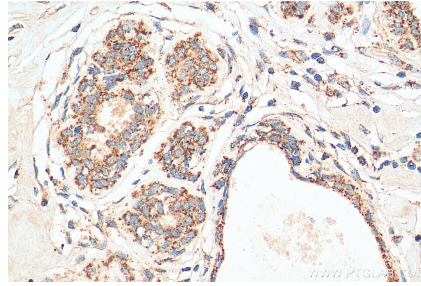
E: proteintech@ptglab.com
W: ptglab.com

This product is exclusively available under Proteintech Group brand and is not available to purchase from any other manufacturer.

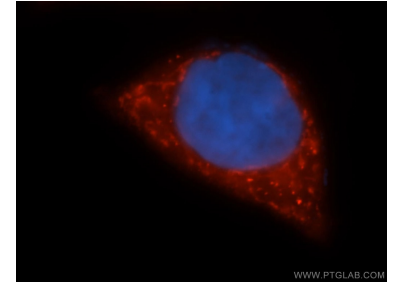
Ausgewählte Validierungsdaten



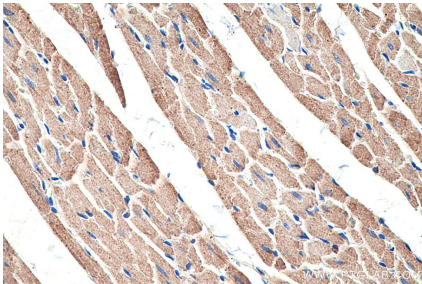
Various lysates were subjected to SDS PAGE followed by western blot with 14800-1-AP (GOT2 antibody) at dilution of 1:8000 incubated at room temperature for 1.5 hours.



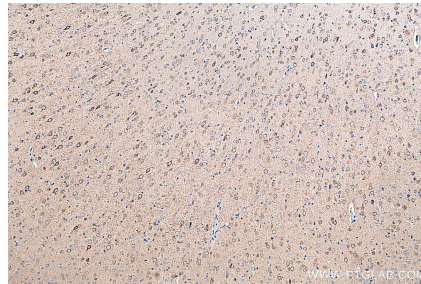
Immunohistochemical analysis of paraffin-embedded human breast cancer tissue slide using 14800-1-AP (GOT2 antibody) at dilution of 1:200 (under 40x lens). Heat mediated antigen retrieval with Tris-EDTA buffer (pH 9.0).



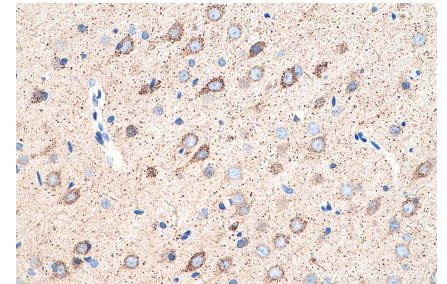
Immunofluorescent analysis of MCF-7 cells, using GOT2 antibody 14800-1-AP at 1:50 dilution and Rhodamine-labeled goat anti-rabbit IgG (red). Blue pseudocolor = DAPI (fluorescent DNA dye).



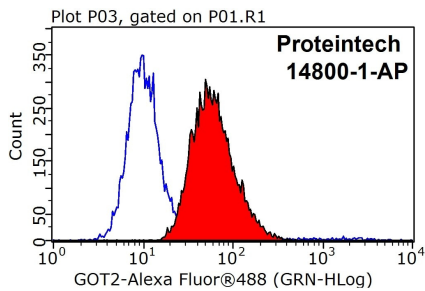
Immunohistochemical analysis of paraffin-embedded rat heart tissue slide using 14800-1-AP (GOT2 antibody) at dilution of 1:4000 (under 40x lens). Heat mediated antigen retrieval with Tris-EDTA buffer (pH 9.0).



Immunohistochemical analysis of paraffin-embedded rat brain tissue slide using 14800-1-AP (GOT2 antibody) at dilution of 1:4000 (under 10x lens). Heat mediated antigen retrieval with Tris-EDTA buffer (pH 9.0).



Immunohistochemical analysis of paraffin-embedded rat brain tissue slide using 14800-1-AP (GOT2 antibody) at dilution of 1:4000 (under 40x lens). Heat mediated antigen retrieval with Tris-EDTA buffer (pH 9.0).



1×10^6 HEK-293 cells were stained with 0.2ug GOT2 antibody (14800-1-AP, red) and control antibody (blue). Fixed with 90% MeOH blocked with 3% BSA (30 min). Alexa Fluor 488-conjugated AffiniPure Goat Anti-Rabbit IgG(H+L) with dilution 1:1000.