

Allgemeine Informationen

Katalog-Nr.:

14812-1-AP

Größe:

150ul , Konzentration: 500 µg/ml von Nanodrop und 293 µg/ml durch die Bradford-Methode mit BSA als Standard;

Wirt:

Kaninchen

Isotyp:

IgG

Immunogen Katalognummer:

AG6562

GenBank-Zugangsnummer:

BC061903

GeneID (NCBI):

23479

Vollständiger Name:

iron-sulfur cluster scaffold homolog (E. coli)

Berechnete Masse:

18 kDa

Beobachtete Masse:

14-15 kDa, 18-19 kDa

Reinigungsmethode:

Antigen-Affinitätsreinigung

Empfohlene Verdünnungen:

WB 1:500-1:1000
 IP 0.5-4.0 µg für IP und 1:500-1:1000 für WB
 IHC 1:50-1:500
 IF 1:20-1:200

Anwendungen

Geprüfte Anwendungen:

IF, IHC, IP, WB, ELISA

In Publikationen genannte Anwendungen:

IF, IHC, WB

Getestete Reaktivität:

Human, Maus, Ratte

Zitierte Arten:

Human, Maus, Ratte

Hinweis-IHC: Antigendemaskierung mit TE-Puffer pH 9,0 empfohlen. (*) Wahlweise kann die Antigendemaskierung auch mit Citratpuffer pH 6,0 erfolgen.

Positivkontrollen:

WB : Mausherzgewebe, A549-Zellen, COLO 320-Zellen, HeLa-Zellen, Raji-Zellen

IP : Mausherzgewebe,

IHC : humanes Endometriumkarzinomgewebe, humanes Lungenkarzinomgewebe

IF : MCF-7-Zellen,

Hintergrundinformationen

Iron-sulfur (Fe-S) clusters are required for the functions of mitochondrial aconitase, mammalian iron regulatory protein 1, and many other proteins in multiple subcellular compartments. Mitochondrial and cytosolic isoforms of the human Fe-S cluster scaffold protein, iron-sulfur cluster assembly enzyme (ISCU), is involved in activation of iron uptake, redistribution of intracellular iron, and decreased utilization of iron in Fe-S proteins. Defects in ISCU gene are the cause of myopathy with exercise intolerance Swedish type (MEIS), which is characterized by lifelong severe exercise intolerance (PMID: 18304497). Two ISCU isoforms ISCU1 (cytosolic, 15 kDa) and ISCU2 (mitochondrial, 18 kDa), were produced by alternative splicing, and ISCU2 is considered the canonical isoform1. ISCU2 protein is rapidly processed upon maturation (PMID: 11060020). Proteintech's ISCU antibody 14812-1-AP is raised against the full-length ISCU2 and is expected to detect 14 kDa, 15 kDa and 18-19 kDa bands which has been reported in the previous observation (PMID: 11060020).

Bemerkenswerte Veröffentlichungen

Verfasser	Pubmed ID	Journal	Anwendung
Rufeng Zhang	31530015	FASEB J	WB
Shashank Masaldan	28888202	Redox Biol	WB
Yuki Funouchi	26560363	Sci Rep	WB,IHC,IF

Lagerung

Lagerungsbedingungen:

Bei -20°C lagern. Nach dem Versand ein Jahr lang stabil

Lagerungspuffer:

PBS mit 0.02% Natriumazid und 50% Glycerin pH 7.3.

Aliquotieren ist nicht notwendig bei -20°C Lagerung

*** 20ul-Größen enthalten 0.1% BSA

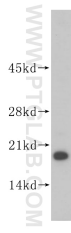
For technical support and original validation data for this product please contact:

T: 1 (888) 4PTGLAB (1-888-478-4522) (toll free in USA), or 1(312) 455-8498 (outside USA)

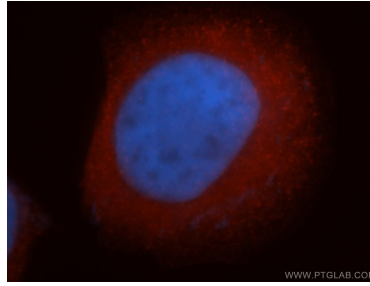
E: proteintech@ptglab.com
 W: ptglab.com

This product is exclusively available under Proteintech Group brand and is not available to purchase from any other manufacturer.

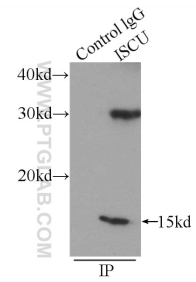
Ausgewählte Validierungsdaten



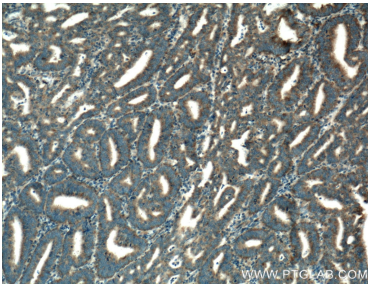
mouse heart tissue were subjected to SDS PAGE followed by western blot with 14812-1-AP (ISCU antibody) at dilution of 1:500 incubated at room temperature for 1.5 hours.



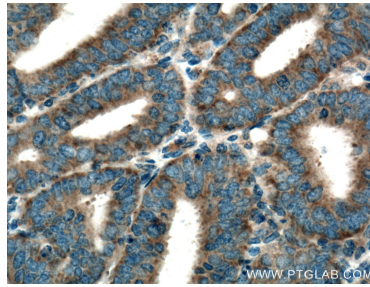
Immunofluorescent analysis of MCF-7 cells, using ISCU antibody 14812-1-AP at 1:50 dilution and Rhodamine-labeled goat anti-rabbit IgG (red). Blue pseudocolor = DAPI (fluorescent DNA dye).



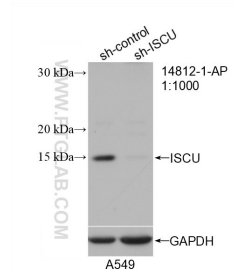
IP Result of anti-ISCU (IP:14812-1-AP, 3ug; Detection:14812-1-AP 1:500) with mouse heart tissue lysate 4000ug.



Immunohistochemical analysis of paraffin-embedded human endometrial cancer tissue slide using 14812-1-AP (ISCU Antibody) at dilution of 1:200 (under 10x lens). Heat mediated antigen retrieval with Tris-EDTA buffer (pH 9.0).



Immunohistochemical analysis of paraffin-embedded human endometrial cancer tissue slide using 14812-1-AP (ISCU Antibody) at dilution of 1:200 (under 40x lens). Heat mediated antigen retrieval with Tris-EDTA buffer (pH 9.0).



WB result of ISCU antibody (14812-1-AP; 1:1000; incubated at room temperature for 1.5 hours) with sh-Control and sh-ISCU transfected A549 cells.