

Allgemeine Informationen

Katalog-Nr.: 14824-1-AP	GenBank-Zugangsnummer: BC002362	Reinigungsmethode: Antigen-Affinitätsreinigung
Größe: 150ul , Konzentration: 500 µg/ml von Nanodrop;	GeneID (NCBI): 3945	Empfohlene Verdünnungen: WB 1:5000-1:50000 IP 0.5-4.0 ug für IP und 1:500-1:2000 für WB
Wirt: Kaninchen	Vollständiger Name: lactate dehydrogenase B	IHC 1:400-1:1500 IF 1:50-1:500
Isotyp: IgG	Berechnete Masse: 36 kDa	
Immunogen Katalognummer: AG6605	Beobachtete Masse: 35 kDa	

Anwendungen

Geprüfte Anwendungen:
FC, IF, IHC, IP, WB, ELISA

In Publikationen genannte Anwendungen:
IF, IHC, WB

Getestete Reaktivität:
Human, Maus, Ratte

Zitierte Arten:
Hausschwein, Huhn, Human, Maus, Ratte, Rind

Hinweis-IHC: Antigenmaskierung mit TE-Puffer pH 9,0 empfohlen. (*) Wahlweise kann die Antigenmaskierung auch mit Citratpuffer pH 6,0 erfolgen.

Positivkontrollen:

WB: HeLa-Zellen, DU 145-Zellen, Mausherzgewebe, Rattenherzgewebe

IP: Maushirngewebe,

IHC: humanes Nierengewebe, humanes Prostatakarzinomgewebe

IF: HeLa-Zellen,

Hintergrundinformationen

LDHB, also named as LDH-H and NY-REN-46, belongs to the LDH/MDH superfamily. And LDH family. It is an enzyme which catalyzes the reversible conversion of pyruvate and NADH to lactate and NAD⁺ in the glycolytic pathway. LDH comprises LDHA and LDHB, two subunits that are encoded by independent genes. In muscle or liver, most of the LDH is composed of four LDHA subunits, and preferably catalyzes the reduction of pyruvate to lactate. In heart and brain, LDH is mainly composed of four LDHB subunits, and predominantly catalyzes the oxidation of lactate to pyruvate. In other tissues, LDH is composed of both LDHA and LDHB. (PMID: 26269128, 31804482)

Bemerkenswerte Veröffentlichungen

Verfasser	Pubmed ID	Journal	Anwendung
Haoran Li	28990097	Mol. Med Rep	
Lifang Li	36230229	Animals (Basel)	WB
Weimou Chen	34603058	Front Pharmacol	WB

Lagerung

Lagerungsbedingungen:

Bei -20°C lagern. Nach dem Versand ein Jahr lang stabil

Lagerungspuffer:

PBS mit 0.02% Natriumazid und 50% Glycerin pH 7.3.

Aliquotieren ist nicht notwendig bei -20°C Lagerung

***** 20ul-Größen enthalten 0.1% BSA**

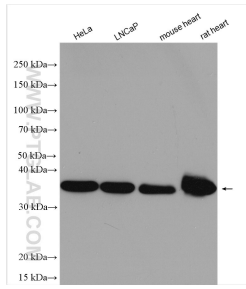
For technical support and original validation data for this product please contact:

T: 1 (888) 4PTGLAB (1-888-478-4522) (toll free in USA), or 1(312) 455-8498 (outside USA)

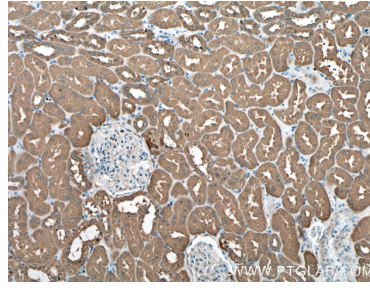
E: proteintech@ptglab.com
W: ptglab.com

This product is exclusively available under Proteintech Group brand and is not available to purchase from any other manufacturer.

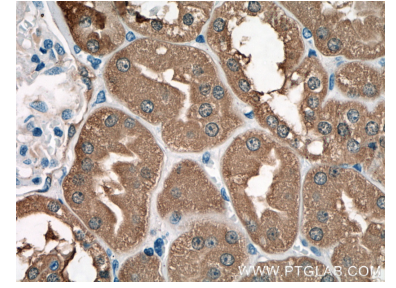
Ausgewählte Validierungsdaten



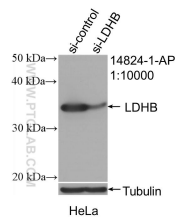
Various lysates were subjected to SDS PAGE followed by western blot with 14824-1-AP (LDHB antibody) at dilution of 1:15000 incubated at room temperature for 1.5 hours.



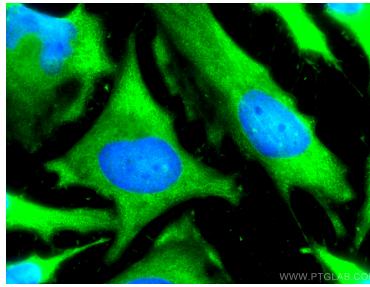
Immunohistochemical analysis of paraffin-embedded human kidney tissue slide using 14824-1-AP (LDHB antibody) at dilution of 1:400 (under 10x lens).



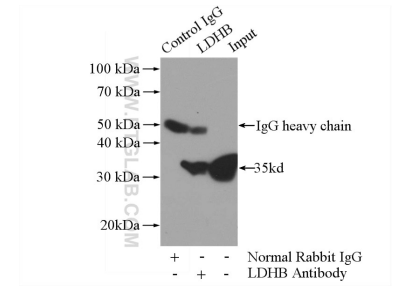
Immunohistochemical analysis of paraffin-embedded human kidney tissue slide using 14824-1-AP (LDHB antibody) at dilution of 1:400 (under 40x lens).



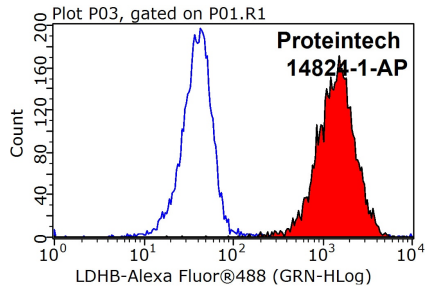
WB result of LDHB antibody (14824-1-AP; 1:10000; incubated at room temperature for 1.5 hours) with sh-Control and sh-LDHB transfected HeLa cells.



Immunofluorescent analysis of (-20°C Methanol) fixed HeLa cells using LDHB antibody (14824-1-AP) at dilution of 1:200 and CoraLite@488-Conjugated AffiniPure Goat Anti-Rabbit IgG(H+L).



IP Result of anti-LDHB (IP:14824-1-AP, 3ug; Detection:14824-1-AP 1:1000) with mouse brain tissue lysate 4000ug.



1x10⁶ HeLa cells were stained with 0.2ug LDHB antibody (14824-1-AP, red) and control antibody (blue). Fixed with 90% MeOH blocked with 3% BSA (30 min). Alexa Fluor 488-conjugated AffiniPure Goat Anti-Rabbit IgG(H+L) with dilution 1:1000.