

Nur für Forschungszwecke

Connexin-26 Polyklonaler Antikörper



Katalog-Nr.: 14842-1-AP

1 Publikationen

Allgemeine Informationen

Katalog-Nr.: 14842-1-AP	GenBank-Zugangsnummer: NM_004004	Reinigungsmethode: Antigen-Affinitätsreinigung
Größe: 150ul, Konzentration: 300 µg/ml von Nanodrop und 207 µg/ml durch die Bradford-Methode mit BSA als Standard;	GeneID (NCBI): 2706	Empfohlene Verdünnungen: WB 1:500-1:2000
Wirt: Kaninchen	Vollständiger Name: gap junction protein, beta 2, 26kDa	
Isotyp: IgG	Berechnete Masse: 26 kDa	
	Beobachtete Masse: 26 kDa	

Anwendungen

Geprüfte Anwendungen: WB, ELISA	Positivkontrollen: WB: humanes Herzgewebe, Maushirngewebe
In Publikationen genannte Anwendungen: IF, WB	
Getestete Reaktivität: Human, Maus	
Zitierte Arten: Human	

Hintergrundinformationen

The gap junctions were first characterized by electron microscopy as regionally specialized structures on plasma membranes of contacting adherent cells. These structures were shown to consist of cell-to-cell channels that facilitate the transfer of ions and small molecules between cells. The gap junction proteins, also known as connexins, purified from fractions of enriched gap junctions from different tissues differ. According to sequence similarities at the nucleotide and amino acid levels, the gap junction proteins are divided into two categories, alpha and beta. Connexin-26 (GJB2) is a beta class gap junction protein. Mutations in the gene for connexin-26 are responsible for as much as 50% of pre-lingual, recessive deafness.

Bemerkenswerte Veröffentlichungen

Verfasser	Pubmed ID	Journal	Anwendung
Stefania Monterisi	36107487	Elife	WB, IF

Lagerung

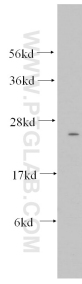
Lagerungsbedingungen:
Bei -20°C lagern. Nach dem Versand ein Jahr lang stabil
Lagerungspuffer:
PBS mit 0.02% Natriumazid und 50% Glycerin pH 7.3.
Aliquotieren ist nicht notwendig bei -20°C Lagerung

*** 20ul-Größen enthalten 0.1% BSA

For technical support and original validation data for this product please contact:
T: 1 (888) 4PTGLAB (1-888-478-4522) (toll free in USA), or 1(312) 455-8498 (outside USA)
E: proteintech@ptglab.com
W: ptglab.com

This product is exclusively available under Proteintech Group brand and is not available to purchase from any other manufacturer.

Ausgewählte Validierungsdaten



human heart tissue were subjected to SDS PAGE followed by western blot with 14842-1-AP (Connexin-26 antibody) at dilution of 1:500 incubated at room temperature for 1.5 hours.