

Nur für Forschungszwecke

# CUL4A-Specific Polyklonaler Antikörper



Katalog-Nr.: 14851-1-AP

Vorgestelltes Produkt

21 Publikationen

## Allgemeine Informationen

<b>Katalog-Nr.:</b> 14851-1-AP	<b>GenBank-Zugangsnummer:</b> NM_003589	<b>Reinigungsmethode:</b> Antigen-Affinitätsreinigung
<b>Größe:</b> 150ul, Konzentration: 450 µg/ml von Nanodrop und 300 µg/ml durch die Bradford-Methode mit BSA als Standard;	<b>GeneID (NCBI):</b> 8451	<b>Empfohlene Verdünnungen:</b> WB 1:1000-1:4000 IHC 1:50-1:500
<b>Wirt:</b> Kaninchen	<b>Vollständiger Name:</b> cullin 4A	
<b>Isotyp:</b> IgG	<b>Berechnete Masse:</b> 88 kDa	
	<b>Beobachtete Masse:</b> 77-88 kDa	

## Anwendungen

<b>Geprüfte Anwendungen:</b> FC, IHC, WB, ELISA	<b>Positivkontrollen:</b> WB : HL-60-Zellen, HeLa-Zellen, Jurkat-Zellen IHC : humanes Nierengewebe,
<b>In Publikationen genannte Anwendungen:</b> IHC, IP, WB	
<b>Getestete Reaktivität:</b> Human, Maus, Ratte	
<b>Zitierte Arten:</b> Human, Maus, Ratte	
<b>Hinweis-IHC: Antigendmaskierung mit TE-Puffer pH 9,0 empfohlen. (*) Wahlweise kann die Antigendmaskierung auch mit Citratpuffer pH 6,0 erfolgen.</b>	

## Hintergrundinformationen

Cullin proteins assemble a large number of RING E3 ubiquitin ligases, participating in the proteolysis through the ubiquitin-proteasome pathway. Two cullin 4 (CUL4) proteins, CUL4A (87 kDa) and CUL4B(104 kDa), have been identified. The two CUL4 sequences are 83% identical. They target certain proteins for degradation by binding protein DDB1 to form a CUL4-DDB1 ubiquitin ligase complex with DDB. They form two individual E3 ligases, DDB1-CUL4A and DDB1-CUL4B in this process. CUL4A appeared in both the nucleus and the cytosol, suggesting a more complex mechanism for entering the nucleus. CUL4B is localized in the nucleus and facilitates the transfer of DDB1 into the nucleus independently of DDB2. This antibody is specially against CUL4A, but not CUL4B.

## Bemerkenswerte Veröffentlichungen

Verfasser	Pubmed ID	Journal	Anwendung
Xu Zhang	36212422	Front Oncol	WB
Yanan Wang	36433955	Nat Commun	IP
Jian Chen	25395170	Nat Commun	WB

## Lagerung

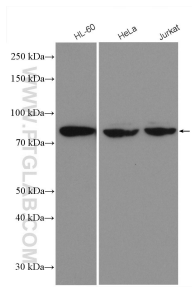
**Lagerungsbedingungen:**  
Bei -20°C lagern. Nach dem Versand ein Jahr lang stabil  
**Lagerungspuffer:**  
PBS mit 0.02% Natriumazid und 50% Glycerin pH 7.3.  
Aliquotieren ist nicht notwendig bei -20°C Lagerung

**\*\*\* 20ul-Größen enthalten 0.1% BSA**

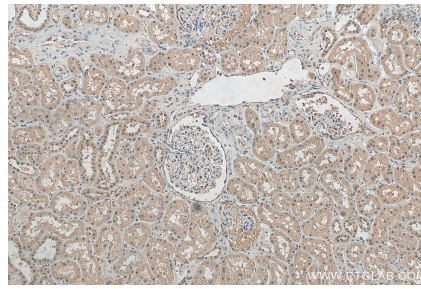
For technical support and original validation data for this product please contact:  
T: 1 (888) 4PTGLAB (1-888-478-4522) (toll free in USA), or 1(312) 455-8498 (outside USA)  
E: proteintech@ptglab.com  
W: ptglab.com

This product is exclusively available under Proteintech Group brand and is not available to purchase from any other manufacturer.

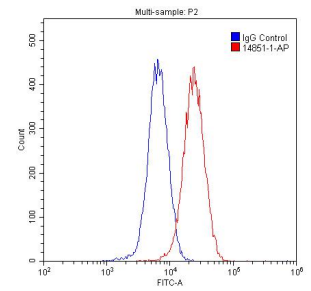
## Ausgewählte Validierungsdaten



Various lysates were subjected to SDS PAGE followed by western blot with 14851-1-AP (CUL4A-Specific antibody) at dilution of 1:2000 incubated at room temperature for 1.5 hours.



Immunohistochemical analysis of paraffin-embedded human kidney tissue slide using 14851-1-AP (CUL4A-Specific antibody) at dilution of 1:200 (under 10x Lens). Heat mediated antigen retrieval with Tris-EDTA buffer (pH 9.0).



1X10<sup>6</sup> HepG2 cells were stained with 0.2ug CUL4A-Specific antibody (14851-1-AP, red) and control antibody (blue). Fixed with 4% PFA blocked with 3% BSA (30 min). Alexa Fluor 488-conjugated AffiniPure Goat Anti-Rabbit IgG(H+L) with dilution 1:1500.