

Nur für Forschungszwecke

SYK Polyklonaler Antikörper

Katalog-Nr.:14858-1-AP

Vorgestelltes Produkt

3 Publikationen



Allgemeine Informationen

Katalog-Nr.: 14858-1-AP	GenBank-Zugangsnummer: BC001645	Reinigungsmethode: Antigen-Affinitätsreinigung
Größe: 150ul , Konzentration: 800 µg/ml von Nanodrop und 433 µg/ml durch die Bradford-Methode mit BSA als Standard;	GeneID (NCBI): 6850	Empfohlene Verdünnungen: WB 1:500-1:3000 IHC 1:400-1:1600
Wirt: Kaninchen	Vollständiger Name: spleen tyrosine kinase	
Isotyp: IgG	Berechnete Masse: 72 kDa	
Immunogen Katalognummer: AG6657	Beobachtete Masse: 65-72 kDa	

Anwendungen

Geprüfte Anwendungen: IHC, WB, ELISA	Positivkontrollen: WB : Daudi-Zellen, Raji-Zellen, Ramos-Zellen
In Publikationen genannte Anwendungen: IHC, WB	IHC : humanes Leberkarzinomgewebe, humanes Appendizitis-Gewebe, humanes Eierstockgewebe, humanes Milzgewebe, humanes Nierengewebe
Getestete Reaktivität: Human, Maus, Ratte	
Zitierte Arten: Human, Maus	
Hinweis-IHC: Antigendemaskierung mit TE-Puffer pH 9,0 empfohlen. (*) Wahlweise kann die Antigendemaskierung auch mit Citratpuffer pH 6,0 erfolgen.	

Hintergrundinformationen

SYK belongs to the protein kinase superfamily, Tyr protein kinase family and SYK/ZAP-70 subfamily. It is positive effector of BCR-stimulated responses. SYK couples the B-cell antigen receptor (BCR) to the mobilization of calcium ion either through a phosphoinositide 3-kinase-dependent pathway, when not phosphorylated on tyrosines of the linker region, or through a phospholipase C-gamma-dependent pathway. It phosphorylates USP25 and regulates its intracellular levels. SYK also promotes liver fibrosis by activation of hepatic stellate cells and acts as a biomarker for human hepatocellular carcinoma. (PMID: 29537660)

Bemerkenswerte Veröffentlichungen

Verfasser	Pubmed ID	Journal	Anwendung
Le Pei	36359082	Animals (Basel)	WB
Quanwei Zhou	35910221	Front Genet	IHC
Wei Xu	36727615	Food Funct	WB

Lagerung

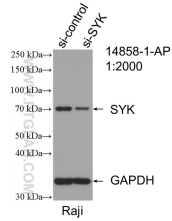
Lagerungsbedingungen:
Bei -20°C lagern. Nach dem Versand ein Jahr lang stabil
Lagerungspuffer:
PBS mit 0.02% Natriumazid und 50% Glycerin pH 7.3.
Aliquotieren ist nicht notwendig bei -20°C Lagerung

*** 20ul-Größen enthalten 0.1% BSA

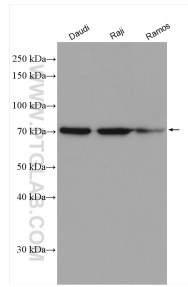
For technical support and original validation data for this product please contact:
T: 1 (888) 4PTGLAB (1-888-478-4522) (toll free in USA), or 1(312) 455-8498 (outside USA)
E: proteintech@ptglab.com
W: ptglab.com

This product is exclusively available under Proteintech Group brand and is not available to purchase from any other manufacturer.

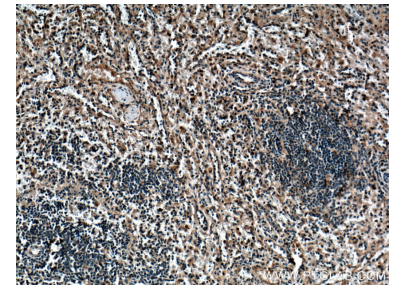
Ausgewählte Validierungsdaten



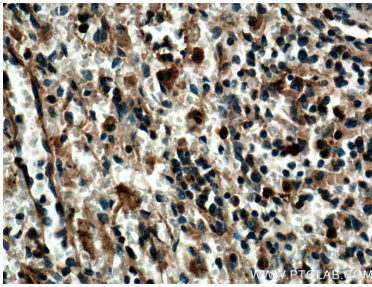
WB result of SYK antibody (14858-1-AP; 1:2000; incubated at room temperature for 1.5 hours) with sh-Control and sh-SYK transfected Raji cells.



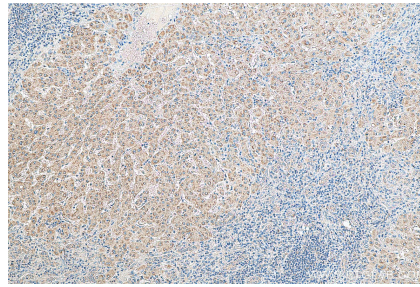
Various lysates were subjected to SDS PAGE followed by western blot with 14858-1-AP (SYK antibody) at dilution of 1:1500 incubated at room temperature for 1.5 hours.



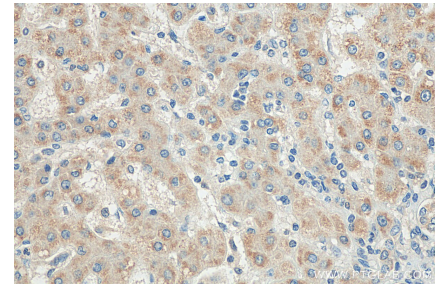
Immunohistochemical analysis of paraffin-embedded human spleen tissue slide using 14858-1-AP (SYK antibody) at dilution of 1:200 (under 10x lens). Heat mediated antigen retrieval with Tris-EDTA buffer (pH 9.0).



Immunohistochemical analysis of paraffin-embedded human spleen tissue slide using 14858-1-AP (SYK antibody) at dilution of 1:200 (under 40x lens). Heat mediated antigen retrieval with Tris-EDTA buffer (pH 9.0).



Immunohistochemical analysis of paraffin-embedded human liver cancer tissue slide using 14858-1-AP (SYK antibody) at dilution of 1:800 (under 10x lens). Heat mediated antigen retrieval with Tris-EDTA buffer (pH 9.0).



Immunohistochemical analysis of paraffin-embedded human liver cancer tissue slide using 14858-1-AP (SYK antibody) at dilution of 1:800 (under 40x lens). Heat mediated antigen retrieval with Tris-EDTA buffer (pH 9.0).