

Allgemeine Informationen

Katalog-Nr.:
14859-1-AP

Größe:
150ul, Konzentration: 400 µg/ml von Nanodrop und 307 µg/ml durch die Bradford-Methode mit BSA als Standard;

Wirt:
Kaninchen

Isotyp:
IgG

Immunogen Katalognummer:
AG6660

GenBank-Zugangsnummer:
BC001114

GeneID (NCBI):
5696

Vollständiger Name:
proteasome (prosome, macropain) subunit, beta type, 8 (large multifunctional peptidase 7)

Berechnete Masse:
30 kDa

Beobachtete Masse:
23 kDa

Reinigungsmethode:

Antigen-Affinitätsreinigung

Empfohlene Verdünnungen:

WB 1:500-1:2000
IP 0.5-4.0 µg für IP und 1:500-1:2000 für WB
IHC 1:20-1:200
IF 1:50-1:500

Anwendungen

Geprüfte Anwendungen:

FC, IF, IHC, IP, WB, ELISA

In Publikationen genannte Anwendungen:

IHC, WB

Getestete Reaktivität:

Human, Maus

Zitierte Arten:

Human, Maus

Hinweis-IHC: Antigenmaskierung mit TE-Puffer pH 9,0 empfohlen. (*) Wahlweise kann die Antigenmaskierung auch mit Citratpuffer pH 6,0 erfolgen.

Positivkontrollen:

WB: Mauseiergewebe, humanes Nierengewebe, Jurkat-Zellen, Raji-Zellen

IP: Raji-Zellen,

IHC: humanes Lymphomgewebe,

IF: HepG2-Zellen,

Hintergrundinformationen

PSMB8(Proteasome subunit beta type-8) is also named as LMP7, PSMB5i, RING10, Y2 and belongs to the peptidase T1B family. The gene encodes the chymotrypsin-like catalytic subunit of the immunoproteasome(PMID: 19525961). PSMB8 has a role in controlling pathogenic immune responses and may be a target in autoimmune disorders. Its prosequence is not essential for incorporation of PSMB8 into the maturing proteasome, but it increased the efficiency of PSMB8 incorporation and proteasome maturation(PMID: 10926487). The pro-PSMB8 is a 276aa protein with the molecular mass of 30 kDa, and the mature form is about 23kDa due to the 72aa propeptide cleaved. Defects in PSMB8 are the cause of Nakajo syndrome (NKJO).

Bemerkenswerte Veröffentlichungen

Verfasser	Pubmed ID	Journal	Anwendung
Xinlong Fan	31559672	J Cell Mol Med	WB
Hiroyuki Kondo	31915251	J Biol Chem	WB,IHC
Yuwei Zhang	35219165	Int Immunopharmacol	

Lagerung

Lagerungsbedingungen:

Bei -20°C lagern. Nach dem Versand ein Jahr lang stabil

Lagerungspuffer:

PBS mit 0.02% Natriumazid und 50% Glycerin pH 7.3.

Aliquotieren ist nicht notwendig bei -20°C Lagerung

***** 20ul-Größen enthalten 0.1% BSA**

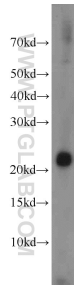
For technical support and original validation data for this product please contact:

T: 1 (888) 4PTGLAB (1-888-478-4522) (toll free in USA), or 1(312) 455-8498 (outside USA)

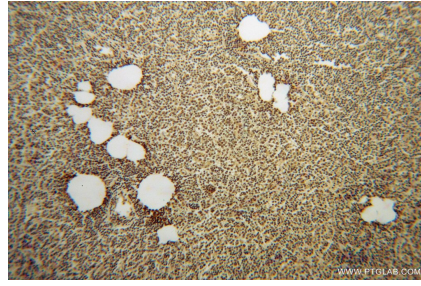
E: proteintech@ptglab.com
W: ptglab.com

This product is exclusively available under Proteintech Group brand and is not available to purchase from any other manufacturer.

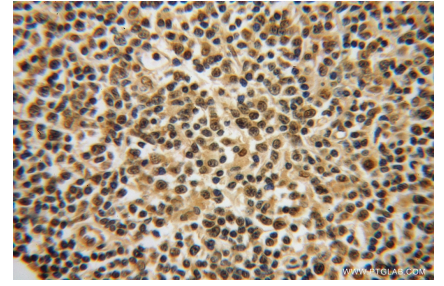
Ausgewählte Validierungsdaten



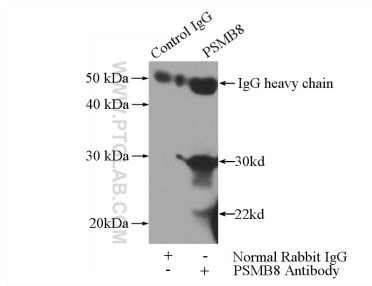
mouse kidney tissue were subjected to SDS PAGE followed by western blot with 14859-1-AP (LMP7 antibody) at dilution of 1:1000 incubated at room temperature for 1.5 hours.



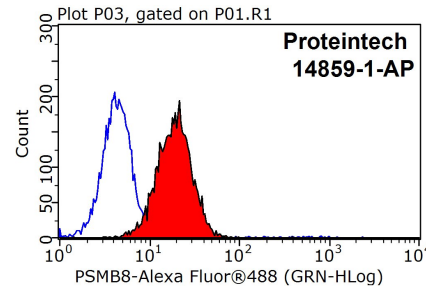
Immunohistochemical analysis of paraffin-embedded human lymphoma using 14859-1-AP (LMP7 antibody) at dilution of 1:50 (under 10x lens).



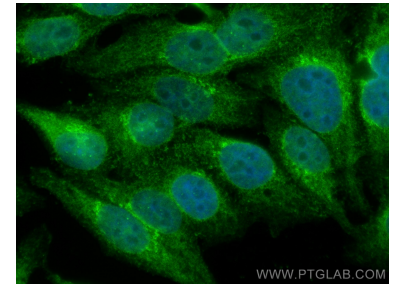
Immunohistochemical analysis of paraffin-embedded human Lymphoma using 14859-1-AP (LMP7 antibody) at dilution of 1:50 (under 40x lens).



IP Result of anti-LMP7 (IP:14859-1-AP, 3ug; Detection:14859-1-AP 1:1000) with Raji cells lysate 2800ug.



1X10⁶ HepG2 cells were stained with 0.2ug LMP7 antibody (14859-1-AP, red) and control antibody (blue). Fixed with 90% MeOH blocked with 3% BSA (30 min). Alexa Fluor 488-conjugated AffiniPure Goat Anti-Rabbit IgG(H+L) with dilution 1:1500.



Immunofluorescent analysis of (4% PFA) fixed HepG2 cells using PSMB8 antibody (14859-1-AP) at dilution of 1:200 and CoraLite@488-Conjugated AffiniPure Goat Anti-Rabbit IgG(H+L).