

Nur für Forschungszwecke

# Aldolase C Polyklonaler Antikörper

Katalog-Nr.:14884-1-AP

Vorgestelltes Produkt

12 Publikationen



## Allgemeine Informationen

<b>Katalog-Nr.:</b> 14884-1-AP	<b>GenBank-Zugangsnummer:</b> BC003613	<b>Reinigungsmethode:</b> Antigen-Affinitätsreinigung
<b>Größe:</b> 150ul , Konzentration: 400 µg/ml von 230 Nanodrop und 267 µg/ml durch die Bradford-Methode mit BSA als Standard;	<b>GeneID (NCBI):</b> 230	<b>Empfohlene Verdünnungen:</b> WB 1:2000-1:10000 IHC 1:50-1:500 IF 1:10-1:100
<b>Wirt:</b> Kaninchen	<b>Vollständiger Name:</b> aldolase C, fructose-bisphosphate	
<b>Isotyp:</b> IgG	<b>Berechnete Masse:</b> 39 kDa	
<b>Immunogen Katalognummer:</b> AG6659	<b>Beobachtete Masse:</b> 39 kDa	

## Anwendungen

<b>Geprüfte Anwendungen:</b> IF, IHC, WB, ELISA	<b>Positivkontrollen:</b> WB : K-562-Zellen, humanes Herzgewebe, Maus-Cerebellum-Gewebe, Maushirngewebe, Rattenhirngewebe IHC : Maushirngewebe, IF : HepG2-Zellen, Maushirngewebe
<b>In Publikationen genannte Anwendungen:</b> IF, IHC, WB	
<b>Getestete Reaktivität:</b> Human, Maus, Ratte	
<b>Zitierte Arten:</b> Human, Maus	
<b>Hinweis-IHC: Antigenmaskierung mit TE-Puffer pH 9,0 empfohlen. (*) Wahlweise kann die Antigenmaskierung auch mit Citratpuffer pH 6,0 erfolgen.</b>	

## Hintergrundinformationen

Fructose-bisphosphate aldolase C (ALDOC) reversibly cleaves FBP and F1-P to glyceraldehyde 3-phosphate and dihydroxyacetone phosphate and is strongly expressed in mammalian brain together with ALDOA and is also present in the heart and spleen of some species (PMID:9363598). It is involved in glycolysis as an important enzyme. Phospholipase D2 and inositol 1,4,5-triphosphate interact with ALDOC in signal transduction. Meanwhile, the protein expression of ALDOC has been reported to be regulated in brain tumor, hepatomas, and lung cancer (PMID:21548097).

## Bemerkenswerte Veröffentlichungen

Verfasser	Pubmed ID	Journal	Anwendung
Scott P Allen	31647549	Brain	WB
Minzhe Zhu	33059001	Biochim Biophys Acta Mol Basis Dis	WB
J J David Ho	32472050	Nat Commun	WB

## Lagerung

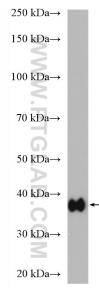
**Lagerungsbedingungen:**  
Bei -20°C lagern. Nach dem Versand ein Jahr lang stabil  
**Lagerungspuffer:**  
PBS mit 0.02% Natriumazid und 50% Glycerin pH 7.3.  
Aliquotieren ist nicht notwendig bei -20°C Lagerung

\*\*\* 20ul-Größen enthalten 0.1% BSA

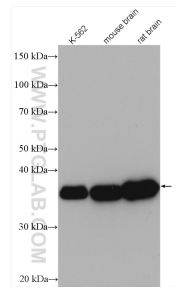
For technical support and original validation data for this product please contact:  
T: 1 (888) 4PTGLAB (1-888-478-4522) (toll free in USA), or 1(312) 455-8498 (outside USA)  
E: proteintech@ptglab.com  
W: ptglab.com

This product is exclusively available under Proteintech Group brand and is not available to purchase from any other manufacturer.

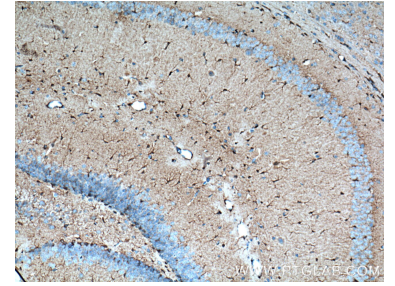
## Ausgewählte Validierungsdaten



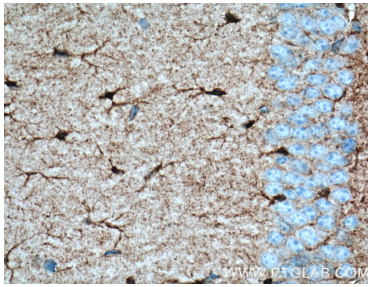
mouse cerebellum tissue were subjected to SDS PAGE followed by western blot with 14884-1-AP (Aldolase C antibody) at dilution of 1:10000 incubated at room temperature for 1.5 hours.



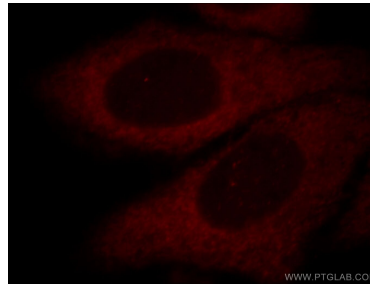
Various lysates were subjected to SDS PAGE followed by western blot with 14884-1-AP (Aldolase C antibody) at dilution of 1:5000 incubated at room temperature for 1.5 hours.



Immunohistochemical analysis of paraffin-embedded mouse brain tissue slide using 14884-1-AP (Aldolase C antibody at dilution of 1:200 (under 10x lens). Heat mediated antigen retrieval with Tris-EDTA buffer (pH 9.0).



Immunohistochemical analysis of paraffin-embedded mouse brain tissue slide using 14884-1-AP (Aldolase C antibody at dilution of 1:200 (under 40x lens). Heat mediated antigen retrieval with Tris-EDTA buffer (pH 9.0).



Immunofluorescent analysis of HepG2 cells, using ALDOC antibody 14884-1-AP at 1:25 dilution and Rhodamine-labeled goat anti-rabbit IgG (red).