

Nur für Forschungszwecke

TOB1 Polyklonaler Antikörper

Katalog-Nr.: 14915-1-AP

8 Publikationen



Allgemeine Informationen

Katalog-Nr.:

14915-1-AP

Größe:

150ul, Konzentration: 600 µg/ml von Nanodrop und 367 µg/ml durch die Bradford-Methode mit BSA als Standard;

Wirt:

Kaninchen

Isotyp:

IgG

Immunogen Katalognummer:

AG6714

GenBank-Zugangsnummer:

BC031406

GeneID (NCBI):

10140

Vollständiger Name:

transducer of ERBB2, 1

Berechnete Masse:

38 kDa

Beobachtete Masse:

38-45 kDa

Reinigungsmethode:

Antigen-Affinitätsreinigung

Empfohlene Verdünnungen:

WB 1:500-1:1000
IP 0.5-4.0 µg für IP und 1:500-1:2000 für WB
IHC 1:50-1:500
IF 1:10-1:100

Anwendungen

Geprüfte Anwendungen:

IF, IHC, IP, WB, ELISA

In Publikationen genannte Anwendungen:

IF, IHC, IP, WB

Getestete Reaktivität:

Human, Maus, Ratte

Zitierte Arten:

Human, Maus

Hinweis-IHC: Antigendemaskierung mit TE-Puffer pH 9,0 empfohlen. (*) Wahlweise kann die Antigendemaskierung auch mit Citratpuffer pH 6,0 erfolgen.

Positivkontrollen:

WB: HeLa-Zellen,

IP: HeLa-Zellen,

IHC: humanes Magenkrebsgewebe,

IF: HeLa-Zellen,

Hintergrundinformationen

TOB1, also known as APRO6 or TROB1, is a member of the transducer of erbB-2/B-cell translocation gene protein family. Members of this family are anti-proliferative factors that have the potential to regulate cell growth. The TOB1 protein has a large additional C-terminal region, which contains PAM2 motifs that mediate interactions with poly(A)-binding proteins. The predicted MW of this protein is 38 kDa. Catalog# 14915-1-AP recognises 38 and 45 kDa band, and the additional 45 kDa band may be due to phosphorylation.

Bemerkenswerte Veröffentlichungen

| Verfasser | Pubmed ID | Journal | Anwendung |
|--------------|-----------|-------------|------------|
| Fabian Poetz | 36096941 | Genome Biol | WB |
| Zhongxia Yu | 36085336 | Commun Biol | WB, IF, IP |
| Jin Zhu | 26540468 | Oncotarget | WB |

Lagerung

Lagerungsbedingungen:

Bei -20°C lagern. Nach dem Versand ein Jahr lang stabil

Lagerungspuffer:

PBS mit 0.02% Natriumazid und 50% Glycerin pH 7.3.

Aliquotieren ist nicht notwendig bei -20°C Lagerung

*** 20ul-Größen enthalten 0.1% BSA

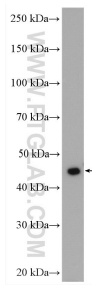
For technical support and original validation data for this product please contact:

T: 1 (888) 4PTGLAB (1-888-478-4522) (toll free in USA), or 1(312) 455-8498 (outside USA)

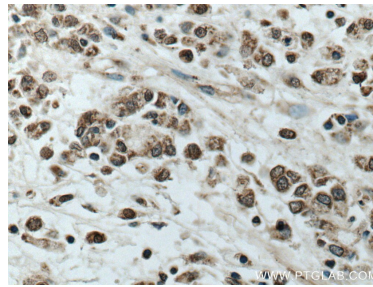
E: proteintech@ptglab.com
W: ptglab.com

This product is exclusively available under Proteintech Group brand and is not available to purchase from any other manufacturer.

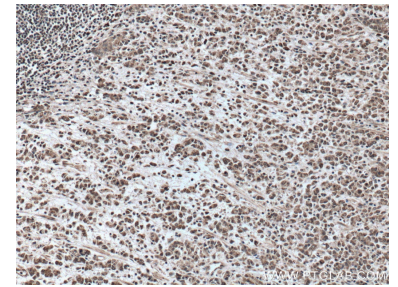
Ausgewählte Validierungsdaten



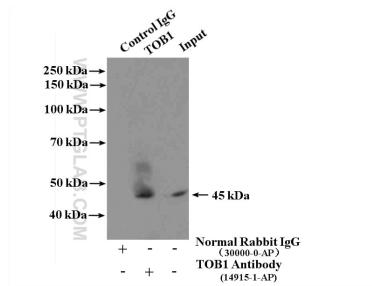
HeLa cells were subjected to SDS PAGE followed by western blot with 14915-1-AP (TOB1 antibody) at dilution of 1:500 incubated at room temperature for 1.5 hours.



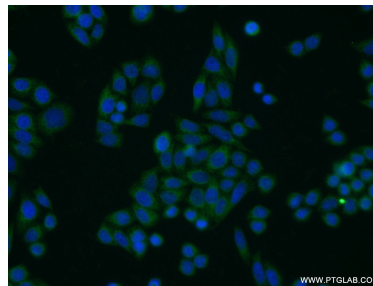
Immunohistochemical analysis of paraffin-embedded human stomach cancer tissue slide using 14915-1-AP (TOB1 antibody) at dilution of 1:100 (under 0x lens. Heat mediated antigen retrieval with Tris-EDTA buffer (pH 9.0).



Immunohistochemical analysis of paraffin-embedded human stomach cancer tissue slide using 14915-1-AP (TOB1 antibody) at dilution of 1:100 (under 0x lens. Heat mediated antigen retrieval with Tris-EDTA buffer (pH 9.0).



IP Result of anti-TOB1 (IP:14915-1-AP, 4ug; Detection:14915-1-AP 1:1000) with HeLa cells lysate 1600ug.



Immunofluorescent analysis of HeLa cells using 14915-1-AP (TOB1 antibody) at dilution of 1:25 and Alexa Fluor 488-conjugated AffiniPure Goat Anti-Rabbit IgG(H+L).