

Nur für Forschungszwecke

# Cytokeratin 19 Polyklonaler Antikörper



Katalog-Nr.: 14965-1-AP

Vorgestelltes Produkt

10 Publikationen

## Allgemeine Informationen

<b>Katalog-Nr.:</b> 14965-1-AP	<b>GenBank-Zugangsnummer:</b> BC002539	<b>Reinigungsmethode:</b> Antigen-Affinitätsreinigung
<b>Größe:</b> 150ul, Konzentration: 1000 µg/ml von 3880 Nanodrop und 427 µg/ml durch die Bradford-Methode mit BSA als Standard;	<b>GeneID (NCBI):</b> keratin 19	<b>Empfohlene Verdünnungen:</b> WB 1:500-1:3000 IHC 1:1000-1:6400 IF 1:200-1:800
<b>Wirt:</b> Kaninchen	<b>Vollständiger Name:</b> keratin 19	
<b>Isotyp:</b> IgG	<b>Berechnete Masse:</b> 44 kDa	
<b>Immunogen Katalognummer:</b> AG6830	<b>Beobachtete Masse:</b> 40 kDa, 46 kDa	

## Anwendungen

### Geprüfte Anwendungen:

FC, IF, IHC, WB, ELISA

### In Publikationen genannte Anwendungen:

IF, IHC, WB

### Getestete Reaktivität:

Human, Maus, Ratte

### Zitierte Arten:

Affe, Human, Maus, Ratte

**Hinweis-IHC: Antigendemaskierung mit TE-Puffer pH 9,0 empfohlen. (\*) Wahlweise kann die Antigendemaskierung auch mit Citratpuffer pH 6,0 erfolgen.**

### Positivkontrollen:

**WB:** MCF7 cells, BxPC-3-Zellen, HeLa-Zellen, HepG2-Zellen

**IHC:** humanes Kolongewebe, humanes Leberkarzinomgewebe, humanes Lungenkarzinomgewebe, humanes Zervixkarzinomgewebe, Maus-Kolongewebe, Ratten-Kolongewebe

**IF:** HeLa-Zellen, A431-Zellen

## Hintergrundinformationen

Keratins are a large family of proteins that form the intermediate filament cytoskeleton of epithelial cells, which are classified into two major sequence types. Type I keratins are a group of acidic intermediate filament proteins, including K9-K23, and the hair keratins Ha1-Ha8. Type II keratins are the basic or neutral counterparts to the acidic type I keratins, including K1-K8, and the hair keratins, Hb1-Hb6. KRT19, one of type I keratins, is specifically expressed in the periderm, the transiently superficial layer that envelopes the developing epidermis. Due to its high sensitivity, KRT19 is the most used marker for detection of tumor cells disseminated in lymph nodes, peripheral blood, and bone marrow of breast cancer patients. This antibody, generated against full length KRT19 protein, also recognizes KRT17, another type I keratin homologous to KRT19.

## Bemerkenswerte Veröffentlichungen

Verfasser	Pubmed ID	Journal	Anwendung
Masahiko Itoh	33184034	Biochim Biophys Acta Mol Basis Dis	IF
Nachiket Vartak	26610202	Hepatology	IF
Zhiqiang Tian	36403057	Cancer Cell Int	IHC

## Lagerung

### Lagerungsbedingungen:

Bei -20°C lagern. Nach dem Versand ein Jahr lang stabil

### Lagerungspuffer:

PBS mit 0.02% Natriumazid und 50% Glycerin pH 7.3.

Aliquotieren ist nicht notwendig bei -20°C Lagerung

\*\*\* 20ul-Größen enthalten 0.1% BSA

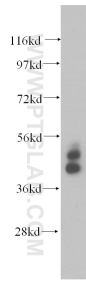
For technical support and original validation data for this product please contact:

T: 1 (888) 4PTGLAB (1-888-478-4522) (toll free in USA), or 1(312) 455-8498 (outside USA)

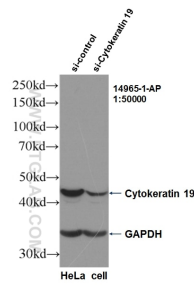
E: proteintech@ptglab.com  
W: ptglab.com

This product is exclusively available under Proteintech Group brand and is not available to purchase from any other manufacturer.

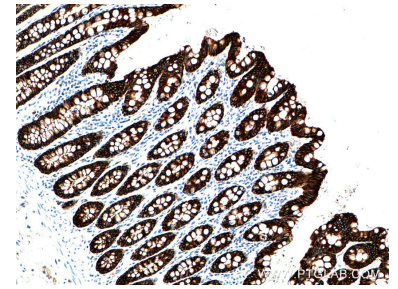
## Ausgewählte Validierungsdaten



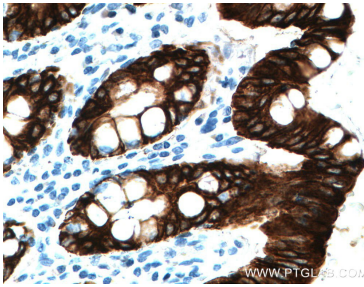
MCF7 cells were subjected to SDS PAGE followed by western blot with 14965-1-AP (Cytokeratin 19 antibody) at dilution of 1:500 incubated at room temperature for 1.5 hours.



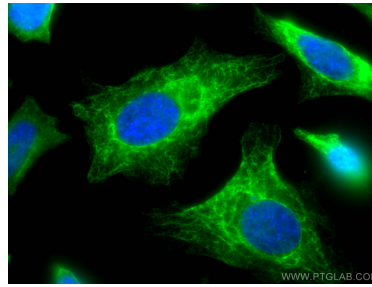
WB result of KRT19 antibody (14965-1-AP, 1:50,000) with si-Control and si-KRT19 transfected HeLa cells.



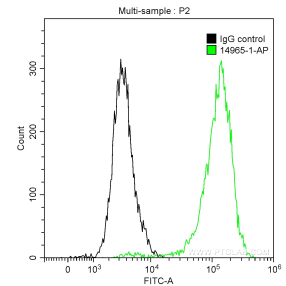
Immunohistochemical analysis of paraffin-embedded human colon tissue slide using 14965-1-AP (Cytokeratin 19 antibody) at dilution of 1:6400 (under 10x lens. Heat mediated antigen retrieval with Tris-EDTA buffer (pH 9.0).



Immunohistochemical analysis of paraffin-embedded human colon tissue slide using 14965-1-AP (Cytokeratin 19 antibody) at dilution of 1:6400 (under 40x lens. Heat mediated antigen retrieval with Tris-EDTA buffer (pH 9.0).



Immunofluorescent analysis of (4% PFA) fixed HeLa cells using Cytokeratin 19 antibody (14965-1-AP) at dilution of 1:400 and CoraLite®488-Conjugated AffiniPure Goat Anti-Rabbit IgG(H+L).



$1 \times 10^6$  MCF-7 cells were stained with 0.2 ug Anti-Human Cytokeratin 19 (14965-1-AP) and CoraLite®488-Conjugated AffiniPure Goat Anti-Rabbit IgG(H+L) at dilution 1:1000 (green), and 0.2 ug Control Antibody. Cells were fixed with 90% MeOH.