

Nur für Forschungszwecke

MGLL Polyklonaler Antikörper

Katalog-Nr.:14986-1-AP

Vorgestelltes Produkt

5 Publikationen



Allgemeine Informationen

Katalog-Nr.:

14986-1-AP

Größe:

150ul, Konzentration: 450 µg/ml von Nanodrop;

Wirt:

Kaninchen

Isotyp:

IgG

Immunogen Katalognummer:

AG6970

GenBank-Zugangsnummer:

BC000551

GeneID (NCBI):

11343

Vollständiger Name:

monoglyceride lipase

Berechnete Masse:

33 kDa

Reinigungsmethode:

Antigen-Affinitätsreinigung

Empfohlene Verdünnungen:

WB 1:300-1:600

IP 0.5-4.0 µg für IP und 1:200-1:1000

für WB

IHC 1:50-1:500

Anwendungen

Geprüfte Anwendungen:

IHC, IP, WB, ELISA

In Publikationen genannte Anwendungen:

IHC, WB

Getestete Reaktivität:

Human, Maus, Ratte

Zitierte Arten:

Human, Maus, Ratte

Hinweis-IHC: Antigendemaskierung mit TE-Puffer pH 9,0 empfohlen. (*) Wahlweise kann die Antigendemaskierung auch mit Citratpuffer pH 6,0 erfolgen.

Positivkontrollen:

WB : HepG2-Zellen, L02-Zellen, SMMC-7721-Zellen

IP : Mauslebergewebe,

IHC : humanes Leberkarzinomgewebe,

Hintergrundinformationen

MGLL (monoglyceride lipase) is also named as MAGL, HU-K5 and belongs to the monoacylglycerol lipase family. It converts monoacylglycerides to free fatty acids and glycerol and functions together with hormone-sensitive lipase (HSL) in the mobilization of fatty acids from the triglyceride stores of adipocytes. MGL protein is ubiquitously expressed in kidney, spleen, heart, liver, stomach, brain, lung, adrenal gland, adipose tissue and in brain, there are two bands of 33 kDa and 35 kDa can be detected. The single protein species expressed in muscle is larger (around 40 kDa) (PMID:11470505). This protein can exist as a homodimer (PMID:19957260).

Bemerkenswerte Veröffentlichungen

Verfasser	Pubmed ID	Journal	Anwendung
Jinming Zhang	32198011	Neuroscience	WB
Shuting Xia	27296803	Elife	WB
Xintian Chen	36694250	J Exp Clin Cancer Res	WB,IHC

Lagerung

Lagerungsbedingungen:

Bei -20°C lagern. Nach dem Versand ein Jahr lang stabil

Lagerungspuffer:

PBS mit 0.02% Natriumazid und 50% Glycerin pH 7.3.

Aliquotieren ist nicht notwendig bei -20°C Lagerung

*** 20ul-Größen enthalten 0.1% BSA

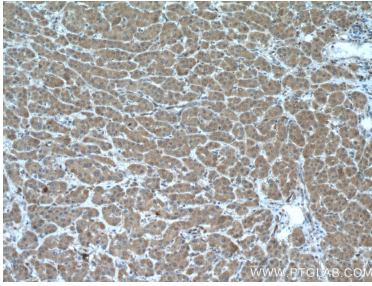
For technical support and original validation data for this product please contact:

T: 1 (888) 4PTGLAB (1-888-478-4522) (toll free in USA), or 1(312) 455-8498 (outside USA)

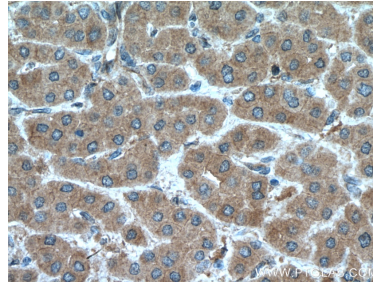
E: proteintech@ptglab.com
W: ptglab.com

This product is exclusively available under Proteintech Group brand and is not available to purchase from any other manufacturer.

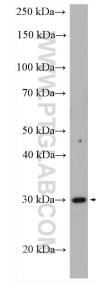
Ausgewählte Validierungsdaten



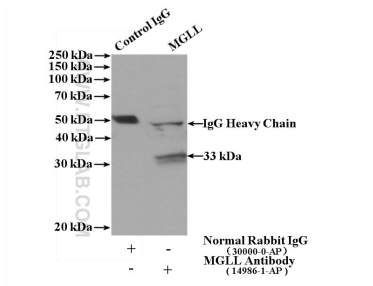
Immunohistochemical analysis of paraffin-embedded human liver cancer tissue slide using 14986-1-AP (MGLL antibody) at dilution of 1:200 (under 10x lens. Heat mediated antigen retrieval with Tris-EDTA buffer (pH 9.0)).



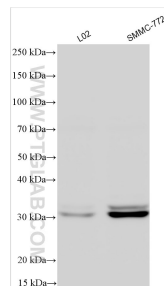
Immunohistochemical analysis of paraffin-embedded human liver cancer tissue slide using 14986-1-AP (MGLL antibody) at dilution of 1:200 (under 40x lens. Heat mediated antigen retrieval with Tris-EDTA buffer (pH 9.0)).



HepG2 cells were subjected to SDS PAGE followed by western blot with 14986-1-AP (MGLL antibody) at dilution of 1:600 incubated at room temperature for 1.5 hours.



IP Result of anti-MGLL (IP:14986-1-AP, 4ug; Detection:14986-1-AP 1:300) with mouse liver tissue lysate 4000ug.



Various lysates were subjected to SDS PAGE followed by western blot with 14986-1-AP (MGLL antibody) at dilution of 1:800 incubated at room temperature for 1.5 hours.