

Nur für Forschungszwecke

HLA-E Polyklonaler Antikörper

Katalog-Nr.:15008-1-AP

Vorgestelltes Produkt



Allgemeine Informationen

Katalog-Nr.:
15008-1-AP

Größe:
150ul , Konzentration: 500 µg/ml von
Nanodrop und 273 µg/ml durch die
Bradford-Methode mit BSA als
Standard;

Wirt:
Kaninchen

Isotyp:
IgG

Immunogen Katalognummer:
AG6703

GenBank-Zugangsnummer:
BC002578

GeneID (NCBI):
3133

Vollständiger Name:
major histocompatibility complex,
class I, E

Berechnete Masse:
40 kDa

Beobachtete Masse:
40 kDa

Reinigungsmethode:
Antigen-Affinitätsreinigung

Empfohlene Verdünnungen:
WB 1:500-1:1000

Anwendungen

Geprüfte Anwendungen:
WB, ELISA

Getestete Reaktivität:
Human

Positivkontrollen:

WB : THP-1-Zellen, humanes Lebergewebe, humanes
Nierengewebe, HUVEC-Zellen

Hintergrundinformationen

Human major histocompatibility complex (MHC) antigens, also referred to as human leukocyte antigens (HLA), are encoded by genes located on the short arm of chromosome 6 (6p21.3). There are two classes of HLA antigens: class I and class II. This class I molecules are membrane glycoproteins composed of a heavy (alpha) chain which is encoded by a HLA class I gene, and β 2-microglobulin light (beta) chain. The most extensively characterized members of the HLA class I gene family are the genes encoding the major transplantation antigens, HLA-A, B and C. HLA-E is a non-classical MHC class I molecule. HLA-E is frequently overexpressed in tumor diseases, transplants and virus-infected cells and represents an immunomodulatory molecule by binding to the receptors CD94/NKG2A, -B and -C on NK and T cells. Due to its immune suppressive features HLA-E expression might represent an important mechanism of tumors to escape immune surveillance.(PMID: 667938; 3375250; 2249951; 27589686)

Lagerung

Lagerungsbedingungen:

Bei -20°C lagern. Nach dem Versand ein Jahr lang stabil

Lagerungspuffer:

PBS mit 0.02% Natriumazid und 50% Glycerin pH 7.3.

Aliquotieren ist nicht notwendig bei -20°C Lagerung

*** 20ul-Größen enthalten 0.1% BSA

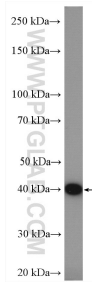
For technical support and original validation data for this product please contact:

T: 1 (888) 4PTGLAB (1-888-478-4522) (toll free
in USA), or 1(312) 455-8498 (outside USA)

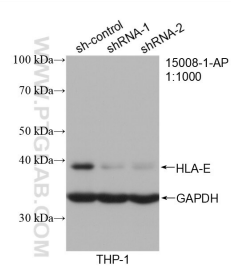
E: proteintech@ptglab.com
W: ptglab.com

This product is exclusively available under Proteintech
Group brand and is not available to purchase from any
other manufacturer.

Ausgewählte Validierungsdaten



THP-1 cells were subjected to SDS PAGE followed by western blot with 15008-1-AP (HLA-E antibody) at dilution of 1:600 incubated at room temperature for 1.5 hours.



WB result of HLA-E antibody (15008-1-AP; 1:1000; incubated at room temperature for 1.5 hours) with sh-Control and sh-HLA-E transfected THP-1 cells.