

Allgemeine Informationen

Katalog-Nr.:

15010-1-AP

Größe:

150ul , Konzentration: 600 µg/ml von Nanodrop und 333 µg/ml durch die Bradford-Methode mit BSA als Standard;

Wirt:

Kaninchen

Isotyp:

IgG

Immunogen Katalognummer:

AG6826

GenBank-Zugangsnummer:

BC001441

GeneID (NCBI):

6502

Vollständiger Name:

S-phase kinase-associated protein 2 (p45)

Berechnete Masse:

48 kDa

Beobachtete Masse:

48 kDa

Reinigungsmethode:

Antigen-Affinitätsreinigung

Empfohlene Verdünnungen:

WB 1:1000-1:5000

IP 0.5-4.0 µg für IP und 1:200-1:1000

für WB

IHC 1:50-1:500

IF 1:10-1:100

Anwendungen

Geprüfte Anwendungen:

IF, IHC, IP, WB, ELISA

In Publikationen genannte Anwendungen:

IF, IHC, IP, WB

Getestete Reaktivität:

Human

Zitierte Arten:

Human, Maus, Ratte

Hinweis-IHC: Antigendemaskierung mit TE-Puffer pH 9,0 empfohlen. (*) Wahlweise kann die Antigendemaskierung auch mit Citratpuffer pH 6,0 erfolgen.

Positivkontrollen:

WB : HEK-293-Zellen, Jurkat-Zellen

IP : HEK-293-Zellen,

IHC : humanes Lungenkarzinomgewebe, humanes Mammakarzinomgewebe

IF : HepG2-Zellen,

Hintergrundinformationen

SKP2(S-phase kinase-associated protein 2) is also named as FBXL1 and belongs to the F-box family. It regulates cellular proliferation by targeting several cell cycle-regulated proteins for ubiquitination and degradation, including cyclin-dependent kinase inhibitor CDKN1B(PMID:22200179). The acetylation of SKP2 in the nuclear localization signal (NLS) can promote its cytoplasmic retention, and cytoplasmic SKP2 enhances cellular migration through ubiquitination and destruction of CDH. This protein has 3 isoforms produced by alternative splicing.

Bemerkenswerte Veröffentlichungen

Verfasser	Pubmed ID	Journal	Anwendung
Yong-Li Zhang	34679694	Antioxidants (Basel)	WB
Xiaohong Xia	34599966	J Biol Chem	IF
Dian Bao	34803506	Int J Biol Sci	WB,IF

Lagerung

Lagerungsbedingungen:

Bei -20°C lagern. Nach dem Versand ein Jahr lang stabil

Lagerungspuffer:

PBS mit 0.02% Natriumazid und 50% Glycerin pH 7.3.

Aliquotieren ist nicht notwendig bei -20°C Lagerung

***** 20ul-Größen enthalten 0.1% BSA**

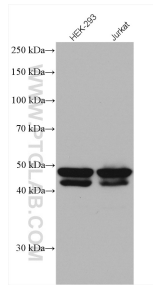
For technical support and original validation data for this product please contact:

T: 1 (888) 4PTGLAB (1-888-478-4522) (toll free in USA), or 1(312) 455-8498 (outside USA)

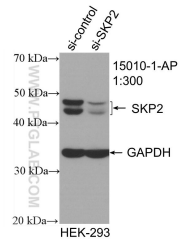
E: proteintech@ptglab.com
 W: ptglab.com

This product is exclusively available under Proteintech Group brand and is not available to purchase from any other manufacturer.

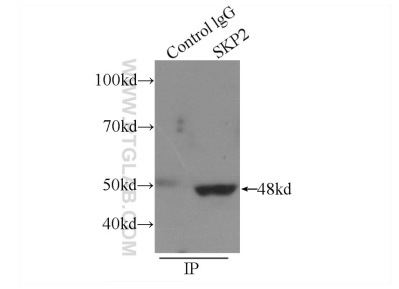
Ausgewählte Validierungsdaten



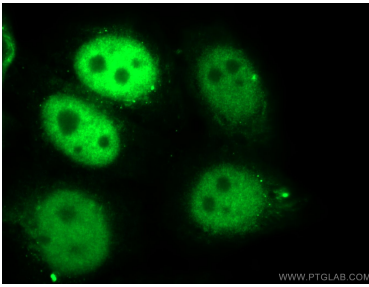
Various lysates were subjected to SDS PAGE followed by western blot with 15010-1-AP (SKP2 antibody) at dilution of 1:2500 incubated at room temperature for 1.5 hours.



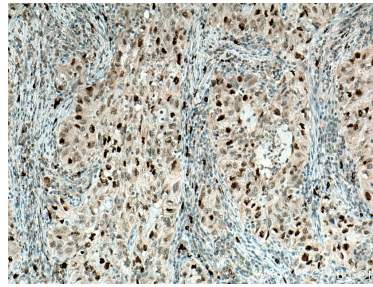
WB result of SKP2 antibody (15010-1-AP; 1:300; incubated at room temperature for 1.5 hours) with sh-Control and sh-SKP2 transfected HEK-293 cells.



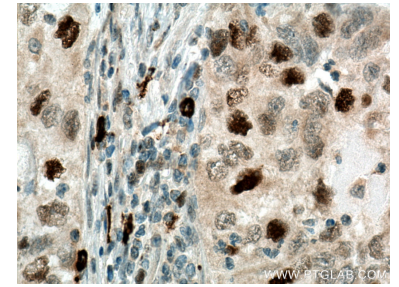
IP Result of anti-SKP2 (IP:15010-1-AP, 4 μ g; Detection:15010-1-AP 1:300) with HEK-293 cells lysate 2440 μ g.



Immunofluorescent analysis of HepG2 cells using 15010-1-AP (SKP2 antibody) at dilution of 1:25 and Alexa Fluor 488-conjugated AffiniPure Goat Anti-Rabbit IgG(H+L).



Immunohistochemical analysis of paraffin-embedded human lung cancer tissue slide using 15010-1-AP (SKP2 antibody) at dilution of 1:200 (under 10x lens). Heat mediated antigen retrieval with Tris-EDTA buffer (pH 9.0).



Immunohistochemical analysis of paraffin-embedded human lung cancer tissue slide using 15010-1-AP (SKP2 antibody) at dilution of 1:200 (under 40x lens). Heat mediated antigen retrieval with Tris-EDTA buffer (pH 9.0).