

Nur für Forschungszwecke

Thymidylate synthase Polyklonaler Antikörper



Katalog-Nr.:15047-1-AP

Vorgestelltes Produkt

23 Publikationen

Allgemeine Informationen

Katalog-Nr.:
15047-1-AP

Größe:
150ul , Konzentration: 850 µg/ml von
Nanodrop und 307 µg/ml durch die
Bradford-Methode mit BSA als
Standard;

Wirt:
Kaninchen

Isotyp:
IgG

Immunogen Katalognummer:
AG7027

GenBank-Zugangsnummer:
BC002567

GeneID (NCBI):
7298

Vollständiger Name:
thymidylate synthetase

Berechnete Masse:
36 kDa

Beobachtete Masse:
32-36 kDa

Reinigungsmethode:

Antigen-Affinitätsreinigung

Empfohlene Verdünnungen:

WB 1:500-1:5000
IP 0.5-4.0 ug für IP und 1:500-1:1000
für WB
IHC 1:50-1:500
IF 1:50-1:500

Anwendungen

Geprüfte Anwendungen:

FC, IF, IHC, IP, WB, ELISA

In Publikationen genannte Anwendungen:

IHC, WB

Getestete Reaktivität:

Human, Maus, Ratte

Zitierte Arten:

Human, Maus

Hinweis-IHC: Antigenmaskierung mit TE-Puffer pH 9,0 empfohlen. (*) Wahlweise kann die Antigenmaskierung auch mit Citratpuffer pH 6,0 erfolgen.

Positivkontrollen:

WB : HeLa-Zellen, HEK-293T-Zellen, HEK-293-Zellen, MCF-7-Zellen, NIH/3T3-Zellen

IP : HeLa-Zellen,

IHC : humanes Endometriumkarzinomgewebe, humanes Kolonkarzinomgewebe

IF : HepG2-Zellen,

Hintergrundinformationen

Thymidylate synthase gene (TYMS) encodes thymidylate synthase (TS) which is an important factor in the growth of tumor cells. TS can catalyze the transformation of intracellular uridine monophosphate (UMP) into dTMP which is required for DNA replication and repairing. TS is a key enzyme in the process of cell proliferation, also is the important target enzymes of 5-FU and other chemotherapy drugs. The expression of TYMS is negatively correlated with the efficacy of chemotherapy and the prognosis of patients who suffer from rectal cancer, breast cancer, colorectal cancer, gastric cancer, head and neck cancer, esophageal cancer, pancreatic cancer and so on.

Bemerkenswerte Veröffentlichungen

Verfasser	Pubmed ID	Journal	Anwendung
Stephen Hsien-Chi Yuan	36139323	Animals (Basel)	WB
Li Cui	34533844	J Pineal Res	WB
Yiqing Zhao	32907836	Cancer Res	WB

Lagerung

Lagerungsbedingungen:

Bei -20°C lagern. Nach dem Versand ein Jahr lang stabil

Lagerungspuffer:

PBS mit 0.02% Natriumazid und 50% Glycerin pH 7.3.

Aliquotieren ist nicht notwendig bei -20°C Lagerung

*** 20ul-Größen enthalten 0.1% BSA

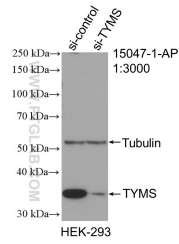
For technical support and original validation data for this product please contact:

T: 1 (888) 4PTGLAB (1-888-478-4522) (toll free in USA), or 1(312) 455-8498 (outside USA)

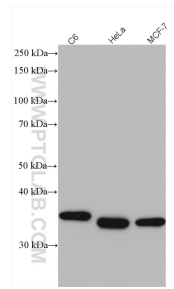
E: proteintech@ptglab.com
W: ptglab.com

This product is exclusively available under Proteintech Group brand and is not available to purchase from any other manufacturer.

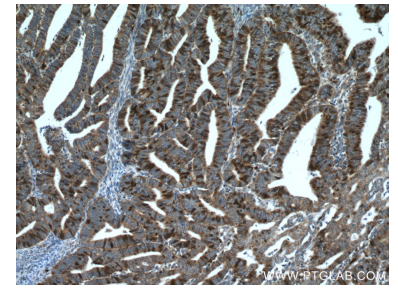
Ausgewählte Validierungsdaten



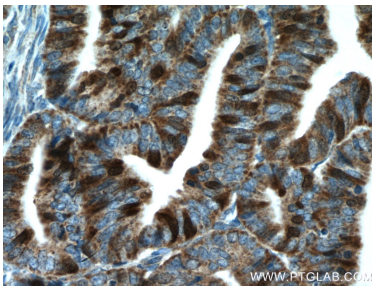
WB result of Thymidylate synthase antibody (15047-1-AP; 1:3000; incubated at room temperature for 1.5 hours) with sh-Control and sh-Thymidylate synthase transfected HEK-293 cells.



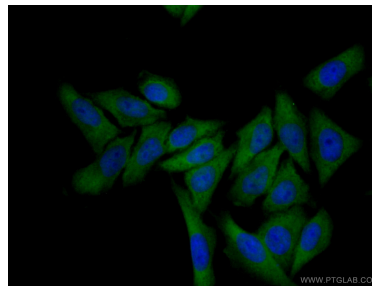
Various lysates were subjected to SDS PAGE followed by western blot with 15047-1-AP (Thymidylate synthase antibody) at dilution of 1:3000 incubated at room temperature for 1.5 hours.



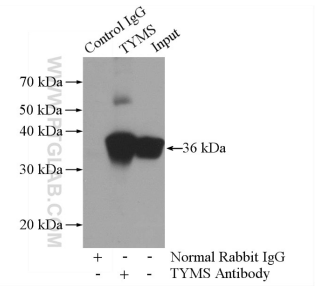
Immunohistochemical analysis of paraffin-embedded human endometrial cancer tissue slide using 15047-1-AP (Thymidylate synthase antibody) at dilution of 1:200 (under 10x lens. Heat mediated antigen retrieval with Tris-EDTA buffer (pH 9.0).



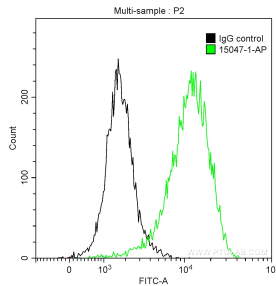
Immunohistochemical analysis of paraffin-embedded human endometrial cancer tissue slide using 15047-1-AP (Thymidylate synthase antibody) at dilution of 1:200 (under 40x lens. Heat mediated antigen retrieval with Tris-EDTA buffer (pH 9.0).



Immunofluorescent analysis of (-20°C Ethanol) fixed HepG2 cells using 15047-1-AP (Thymidylate synthase antibody) at dilution of 1:50 and CoraLite488-Conjugated AffiniPure Goat Anti-Rabbit IgG(H+L).



IP Result of anti-Thymidylate synthase (IP:15047-1-AP, 3ug; Detection:15047-1-AP 1:600) with HeLa cells lysate 3200ug.



1x10⁶ HeLa cells were intracellularly stained with 0.2 ug Anti-Human Thymidylate synthase (15047-1-AP) and CoraLite[®]488-Conjugated AffiniPure Goat Anti-Rabbit IgG(H+L) at dilution 1:1000 (green), and 0.2 ug Control Antibody. Cells were fixed with 90% MeOH.