

Nur für Forschungszwecke

SMOX Polyklonaler Antikörper

Katalog-Nr.:15052-1-AP

Vorgestelltes Produkt

24 Publikationen



Allgemeine Informationen

Katalog-Nr.: 15052-1-AP	GenBank-Zugangsnummer: BC000669	Reinigungsmethode: Antigen-Affinitätsreinigung
Größe: 150ul , Konzentration: 750 µg/ml von Nanodrop;	GeneID (NCBI): 54498	Empfohlene Verdünnungen: WB 1:2000-1:10000 IHC 1:50-1:500
Wirt: Kaninchen	Vollständiger Name: spermine oxidase	
Isotyp: IgG	Berechnete Masse: 62 kDa	
Immunogen Katalognummer: AG7035	Beobachtete Masse: 56-65 kDa	

Anwendungen

Geprüfte Anwendungen:

IHC, WB, ELISA

In Publikationen genannte Anwendungen:

IF, IHC, WB

Getestete Reaktivität:

Human, Maus, Ratte

Zitierte Arten:

Human, Maus, Ratte

Hinweis-IHC: Antigenmaskierung mit TE-Puffer pH 9,0 empfohlen. (*) Wahlweise kann die Antigenmaskierung auch mit Citratpuffer pH 6,0 erfolgen.

Positivkontrollen:

WB : A549-Zellen, HeLa-Zellen, MCF-7-Zellen, PC-13-Zellen, PC-3-Zellen

IHC : humanes Prostatakarzinomgewebe, humanes Gliomgewebe, humanes Magenkrebsgewebe

Hintergrundinformationen

SMOX(Spermine oxidase) is also named as SMO, PAO-1 and PAOh1. It belongs to the class of polyamine oxidases (PAOs).The flavoprotein SMO, which specifically oxidizes Spm, is one of the key regulatory enzymes involved in polyamine homeostasis in animal cells (PMID:14764092). It has 6 isoforms produced by alternative splicing with the MW of 61 kDa, 56 kDa, 21 kDa, 60 kDa, 43 kDa and 65 kDa, respectively.

Bemerkenswerte Veröffentlichungen

Verfasser	Pubmed ID	Journal	Anwendung
Takeshi Uemura	32995657	Heliyon	WB
Anna Bianchi-Smiraglia	30198908	J Clin Invest	WB
Bin Xiang	36353478	Front Pharmacol	IHC

Lagerung

Lagerungsbedingungen:

Bei -20°C lagern. Nach dem Versand ein Jahr lang stabil

Lagerungspuffer:

PBS mit 0.02% Natriumazid und 50% Glycerin pH 7.3.

Aliquotieren ist nicht notwendig bei -20°C Lagerung

*** 20ul-Größen enthalten 0.1% BSA

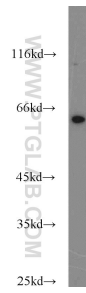
For technical support and original validation data for this product please contact:

T: 1 (888) 4PTGLAB (1-888-478-4522) (toll free in USA), or 1(312) 455-8498 (outside USA)

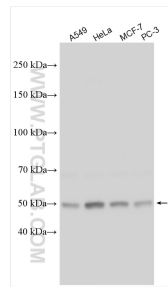
E: proteintech@ptglab.com
W: ptglab.com

This product is exclusively available under Proteintech Group brand and is not available to purchase from any other manufacturer.

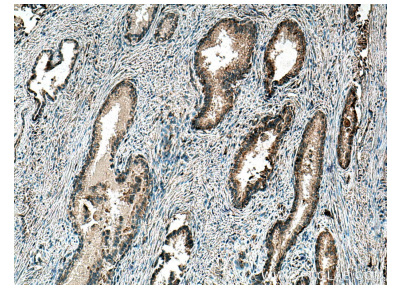
Ausgewählte Validierungsdaten



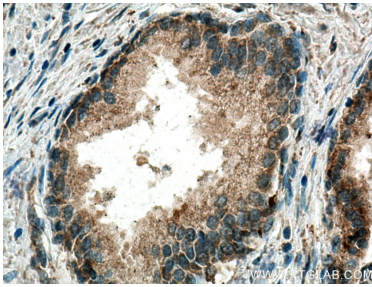
PC-13 cells were subjected to SDS PAGE followed by western blot with 15052-1-AP (SMOX antibody) at dilution of 1:500 incubated at room temperature for 1.5 hours.



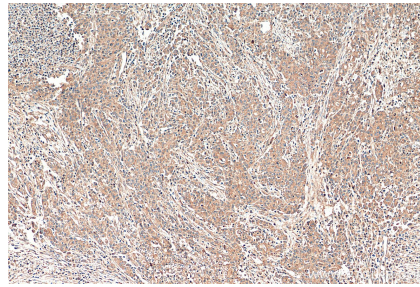
Various lysates were subjected to SDS PAGE followed by western blot with 15052-1-AP (SMOX antibody) at dilution of 1:5000 incubated at room temperature for 1.5 hours.



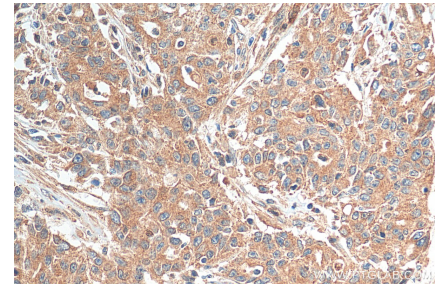
Immunohistochemical analysis of paraffin-embedded human prostate cancer tissue slide using 15052-1-AP (SMOX antibody) at dilution of 1:200 (under 10x lens). Heat mediated antigen retrieval with Tris-EDTA buffer (pH 9.0).



Immunohistochemical analysis of paraffin-embedded human prostate cancer tissue slide using 15052-1-AP (SMOX antibody) at dilution of 1:200 (under 40x lens). Heat mediated antigen retrieval with Tris-EDTA buffer (pH 9.0).



Immunohistochemical analysis of paraffin-embedded human stomach cancer tissue slide using 15052-1-AP (SMOX antibody) at dilution of 1:200 (under 10x lens). Heat mediated antigen retrieval with Tris-EDTA buffer (pH 9.0).



Immunohistochemical analysis of paraffin-embedded human stomach cancer tissue slide using 15052-1-AP (SMOX antibody) at dilution of 1:200 (under 40x lens). Heat mediated antigen retrieval with Tris-EDTA buffer (pH 9.0).