

Nur für Forschungszwecke

# HPRT1 Polyklonaler Antikörper

Katalog-Nr.:15059-1-AP

Vorgestelltes Produkt

24 Publikationen



## Allgemeine Informationen

<b>Katalog-Nr.:</b> 15059-1-AP	<b>GenBank-Zugangsnummer:</b> BC000578	<b>Reinigungsmethode:</b> Antigen-Affinitätsreinigung
<b>Größe:</b> 150ul , Konzentration: 450 µg/ml von Nanodrop;	<b>GeneID (NCBI):</b> 3251	<b>Empfohlene Verdünnungen:</b> WB 1:2000-1:10000 IP 0.5-4.0 ug für IP und 1:500-1:2000 für WB
<b>Wirt:</b> Kaninchen	<b>Vollständiger Name:</b> hypoxanthine phosphoribosyltransferase 1	<b>IHC 1:20-1:200</b> <b>IF 1:200-1:800</b>
<b>Isotyp:</b> IgG	<b>Berechnete Masse:</b> 25 kDa	
<b>Immunogen Katalognummer:</b> AG7044	<b>Beobachtete Masse:</b> 24-28 kDa	

## Anwendungen

**Geprüfte Anwendungen:**  
FC, IF, IHC, IP, WB, ELISA

**In Publikationen genannte Anwendungen:**  
IF, WB

**Getestete Reaktivität:**  
Human, Maus, Ratte

**Zitierte Arten:**  
Human, Maus, Ratte

**Hinweis-IHC: Antigenmaskierung mit TE-Puffer pH 9,0 empfohlen. (\*) Wahlweise kann die Antigenmaskierung auch mit Citratpuffer pH 6,0 erfolgen.**

**Positivkontrollen:**

**WB :** HeLa-Zellen, A549-Zellen, HepG2-Zellen, Jurkat-Zellen, Maushirngewebe, Mauslebergewebe, MCF-7-Zellen, NIH/3T3-Zellen, Rattenhirngewebe, Y79-Zellen

**IP :** Mauslebergewebe,

**IHC :** humanes Hirngewebe, humanes Leberkarzinomgewebe, humanes Pankreasgewebe

**IF :** HeLa-Zellen,

## Hintergrundinformationen

HPRT1, also named HGPRT, plays a central role in the generation of purine nucleotides through the purine salvage pathway. Mutation of HPRT1 is associated with Lesch-Nyhan syndrome (LNS) which is an X-linked inherited neurogenetic disorder of purine metabolism. It has been reported that HPRT1 also plays an important role in HPRT-related gout.

## Bemerkenswerte Veröffentlichungen

Verfasser	Pubmed ID	Journal	Anwendung
R Blair Dodson	27881387	Am J Physiol Heart Circ Physiol	WB
Erin K Zinkhan	30453824	Reprod Sci	WB
Erin K Zinkhan	29896121	Front Physiol	WB

## Lagerung

**Lagerungsbedingungen:**

Bei -20°C lagern. Nach dem Versand ein Jahr lang stabil

**Lagerungspuffer:**

PBS mit 0.02% Natriumazid und 50% Glycerin pH 7.3.

Aliquotieren ist nicht notwendig bei -20°C Lagerung

**\*\*\* 20ul-Größen enthalten 0.1% BSA**

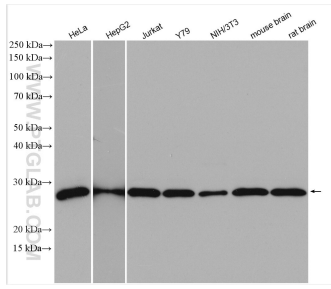
For technical support and original validation data for this product please contact:

T: 1 (888) 4PTGLAB (1-888-478-4522) (toll free in USA), or 1(312) 455-8498 (outside USA)

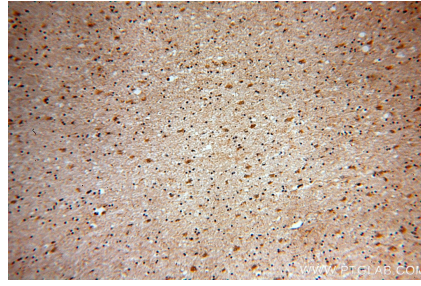
E: proteintech@ptglab.com  
W: ptglab.com

**This product is exclusively available under Proteintech Group brand and is not available to purchase from any other manufacturer.**

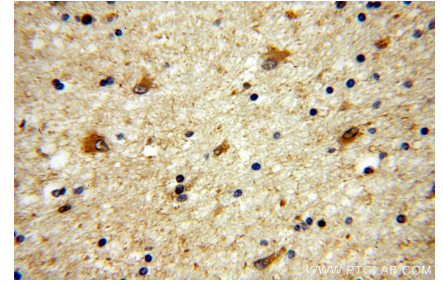
## Ausgewählte Validierungsdaten



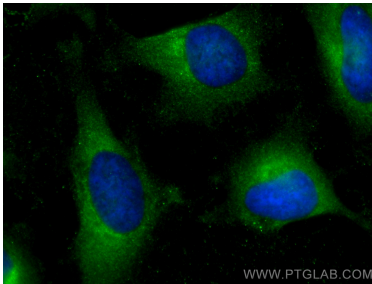
Various lysates were subjected to SDS PAGE followed by western blot with 15059-1-AP (HPRT1 antibody) at dilution of 1:5000 incubated at room temperature for 1.5 hours.



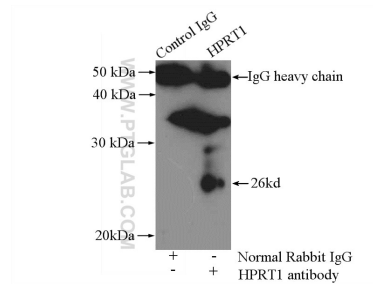
Immunohistochemical analysis of paraffin-embedded human brain using 15059-1-AP (HPRT1 antibody) at dilution of 1:100 (under 10x lens).



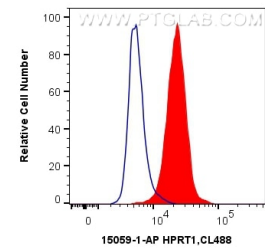
Immunohistochemical analysis of paraffin-embedded human brain using 15059-1-AP (HPRT1 antibody) at dilution of 1:100 (under 40x lens).



Immunofluorescent analysis of (-20°C Methanol) fixed HeLa cells using HPRT1 antibody (15059-1-AP) at dilution of 1:400 and CoraLite®488-Conjugated AffiniPure Goat Anti-Rabbit IgG(H+L).



IP Result of anti-HPRT1 (IP:15059-1-AP, 4ug; Detection:15059-1-AP 1:1000) with mouse liver tissue lysate 4000ug.



$1 \times 10^6$  HeLa cells were intracellularly stained with 0.4 ug Anti-Human HPRT1 (15059-1-AP) and CoraLite®488-Conjugated AffiniPure Goat Anti-Rabbit IgG(H+L) at dilution 1:1000 (red), or 0.4 ug Control Antibody. Cells were fixed with 4% PFA and permeabilized with Flow Cytometry Perm Buffer (PF00011-C).