

## Allgemeine Informationen

**Katalog-Nr.:**

15089-1-AP

**Größe:**

150ul , Konzentration: 650 µg/ml von Nanodrop und 400 µg/ml durch die Bradford-Methode mit BSA als Standard;

**Wirt:**

Kaninchen

**Isotyp:**

IgG

**Immunogen Katalognummer:**

AG0942

**GenBank-Zugangsnummer:**
**GeneID (NCBI):**
**Vollständiger Name:**
**Berechnete Masse:**

40 kDa

**Reinigungsmethode:**

Antigen-Affinitätsreinigung

**Empfohlene Verdünnungen:**

WB 1:1000-1:6000

## Anwendungen

**Geprüfte Anwendungen:**

WB, ELISA

**In Publikationen genannte Anwendungen:**

CoIP, ELISA, IF, IHC, WB

**Getestete Reaktivität:**

Rekombinantes Protein

**Zitierte Arten:**

Ratte

**Positivkontrollen:**

**WB** : Lane 1: MBP-NOL6 64kd; Lane 2 MBP 42kd, Recombinant protein

## Hintergrundinformationen

Protein tags are protein or peptide sequences located either on the C- or N- terminal of the target protein, which facilitates one or several of the following characteristics: solubility, detection, purification, localization and expression. Maltose binding protein (MBP) is the 370 amino acid product of the E.coli mal E gene. MBP is a useful affinity tag that can increase the expression level and solubility of the resulting tagged protein. The MBP tag also promotes proper folding of the attached protein. Plasmid vectors have been constructed utilizing the MBP domain that allow the synthesis of high levels of MBP-fusion proteins that can be purified in a one step procedure by affinity chromatography cross linked amylose resin. Once bound to amylose, the MBP protein can then be separated from the target protein by cleavage by coagulation Factor Xa at a specific four residue site. Alternatively, the intact fusion protein can be specifically eluted from the resin by the addition of excess free maltose. Subsequent to elution, MBP fusion protein can be visualized either by western blot analysis or immunoprecipitation using antibodies specific for the MBP-tag. This antibody recognizes MBP (Maltose binding protein) TAG in some expression systems.

## Bemerkenswerte Veröffentlichungen

Verfasser	Pubmed ID	Journal	Anwendung
Zhaoyang Li	31666698	Nature	
Baocheng Yang	31657525	J Biophotonics	
Di Zhan	33075801	Pediatr Res	IHC

## Lagerung

**Lagerungsbedingungen:**

Bei -20°C lagern. Nach dem Versand ein Jahr lang stabil

**Lagerungspuffer:**

PBS mit 0.02% Natriumazid und 50% Glycerin pH 7.3.

Aliquotieren ist nicht notwendig bei -20°C Lagerung

\*\*\* 20ul-Größen enthalten 0.1% BSA

For technical support and original validation data for this product please contact:

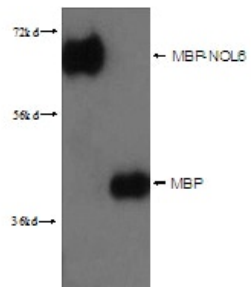
T: 1 (888) 4PTGLAB (1-888-478-4522) (toll free in USA), or 1(312) 455-8498 (outside USA)

E: [proteintech@ptglab.com](mailto:proteintech@ptglab.com)

W: [ptglab.com](http://ptglab.com)

This product is exclusively available under Proteintech Group brand and is not available to purchase from any other manufacturer.

## Ausgewählte Validierungsdaten



lane1: MBP-NOL6 64kd; lane2 MBP 42kd were subjected to SDS PAGE followed by western blot with 15089-1-AP (MBP-Tag Antibody) at dilution of 1:3000.